



Republic of the Philippines
Department of Education
REGION VII – central visayas
SCHOOLS DIVISION OF NEGROS ORIENTAL

PHILIPPINE BIDDING DOCUMENTS

CY 2021 BASIC EDUCATIONAL FACILITIES FUNDS (BEFF) REPAIR OF CLASSROOMS - SAVINGS (MALUAY ELEMENTARY SCHOOL, ZAMBOANGUITA, NEGROS ORIENTAL)

Government of the Republic of the Philippines

**Sixth Edition
July 2020**

Preface

These Philippine Bidding Documents (PBDs) for the procurement of Infrastructure Projects (hereinafter referred to also as the “Works”) through Competitive Bidding have been prepared by the Government of the Philippines for use by all branches, agencies, departments, bureaus, offices, or instrumentalities of the government, including government-owned and/or -controlled corporations, government financial institutions, state universities and colleges, local government units, and autonomous regional government. The procedures and practices presented in this document have been developed through broad experience, and are for mandatory use in projects that are financed in whole or in part by the Government of the Philippines or any foreign government/foreign or international financing institution in accordance with the provisions of the 2016 revised Implementing Rules and Regulations (IRR) of Republic Act (RA) No. 9184.

The PBDs are intended as a model for admeasurements (unit prices or unit rates in a bill of quantities) types of contract, which are the most common in Works contracting.

The Bidding Documents shall clearly and adequately define, among others: (i) the objectives, scope, and expected outputs and/or results of the proposed contract; (ii) the eligibility requirements of Bidders; (iii) the expected contract duration; and (iv) the obligations, duties, and/or functions of the winning Bidder.

Care should be taken to check the relevance of the provisions of the PBDs against the requirements of the specific Works to be procured. If duplication of a subject is inevitable in other sections of the document prepared by the Procuring Entity, care must be exercised to avoid contradictions between clauses dealing with the same matter.

Moreover, each section is prepared with notes intended only as information for the Procuring Entity or the person drafting the Bidding Documents. They shall not be included in the final documents. The following general directions should be observed when using the documents:

- a. All the documents listed in the Table of Contents are normally required for the procurement of Infrastructure Projects. However, they should be adapted as necessary to the circumstances of the particular Project.
- b. Specific details, such as the “*name of the Procuring Entity*” and “*address for bid submission*,” should be furnished in the Instructions to Bidders, Bid Data Sheet, and Special Conditions of Contract. The final documents should contain neither blank spaces nor options.
- c. This Preface and the footnotes or notes in italics included in the Invitation to Bid, BDS, General Conditions of Contract, Special Conditions of Contract, Specifications, Drawings, and Bill of Quantities are not part of the text of the final document, although they contain instructions that the Procuring Entity should strictly follow.

- d. The cover should be modified as required to identify the Bidding Documents as to the names of the Project, Contract, and Procuring Entity, in addition to date of issue.
- e. Modifications for specific Procurement Project details should be provided in the Special Conditions of Contract as amendments to the Conditions of Contract. For easy completion, whenever reference has to be made to specific clauses in the Bid Data Sheet or Special Conditions of Contract, these terms shall be printed in bold typeface on Sections I (Instructions to Bidders) and III (General Conditions of Contract), respectively.
- f. For guidelines on the use of Bidding Forms and the procurement of Foreign-Assisted Projects, these will be covered by a separate issuance of the Government Procurement Policy Board.

TABLE OF CONTENTS

Glossary of Terms, Abbreviations, and Acronyms	5
SECTION I. INVITATION TO BID	8
SECTION II. INSTRUCTIONS TO BIDDERS	11
1. Scope of Bid.....	13
2. Funding Information	13
3. Bidding Requirements.....	13
4. Corrupt, Fraudulent, Collusive, Coercive, and Obstructive Practices	13
5. Eligible Bidders.....	14
6. Origin of Associated Goods	14
7. Subcontracts	14
8. Pre-Bid Conference.....	14
9. Clarification and Amendment of Bidding Documents.....	14
10. Documents Comprising the Bid: Eligibility and Technical Components	15
11. Documents Comprising the Bid: Financial Component	15
12. Alternative Bids	16
13. Bid Prices	16
14. Bid and Payment Currencies.....	16
15. Bid Security.....	16
16. Sealing and Marking of Bids.....	16
17. Deadline for Submission of Bids	17
18. Opening and Preliminary Examination of Bids	17
19. Detailed Evaluation and Comparison of Bids.....	17
20. Post Qualification.....	18
21. Signing of the Contract	18
SECTION III. BID DATA SHEET.....	19
SECTION IV. GENERAL CONDITIONS OF CONTRACT.....	24
1. Scope of Contract.....	25
2. Sectional Completion of Works	25
3. Possession of Site.....	25
4. The Contractor’s Obligations.....	25

5.	Performance Security	26
6.	Site Investigation Reports	26
7.	Warranty.....	26
8.	Liability of the Contractor.....	26
9.	Termination for Other Causes.....	27
10.	Dayworks	27
11.	Program of Work.....	27
12.	Instructions, Inspections and Audits	27
13.	Advance Payment.....	27
14.	Progress Payments	28
15.	Operating and Maintenance Manual	28
16.	Insurance	28
SECTION V. SPECIAL CONDITIONS OF CONTRACT		30
SECTION VI. SPECIFICATIONS		33
SECTION VII. DRAWINGS		88
SECTION VIII. BILL OF QUANTITIES		96
SECTION IX. CHECKLIST OF TECHNICAL AND FINANCIAL DOCUMENTS.....		99
BIDDING FORMS.....		103
ANNEXES.....		113

Glossary of Terms, Abbreviations, and Acronyms

ABC – Approved Budget for the Contract.

ARCC – Allowable Range of Contract Cost.

BAC – Bids and Awards Committee.

Bid – A signed offer or proposal to undertake a contract submitted by a bidder in response to and in consonance with the requirements of the bidding documents. Also referred to as *Proposal* and *Tender*. (2016 revised IRR, Section 5[c])

Bidder – Refers to a contractor, manufacturer, supplier, distributor and/or consultant who submits a bid in response to the requirements of the Bidding Documents. (2016 revised IRR, Section 5[d])

Bidding Documents – The documents issued by the Procuring Entity as the bases for bids, furnishing all information necessary for a prospective bidder to prepare a bid for the Goods, Infrastructure Projects, and/or Consulting Services required by the Procuring Entity. (2016 revised IRR, Section 5[e])

BIR – Bureau of Internal Revenue.

BSP – BangkoSentral ng Pilipinas.

CDA – Cooperative Development Authority.

Consulting Services – Refer to services for Infrastructure Projects and other types of projects or activities of the GOP requiring adequate external technical and professional expertise that are beyond the capability and/or capacity of the GOP to undertake such as, but not limited to: (i) advisory and review services; (ii) pre-investment or feasibility studies; (iii) design; (iv) construction supervision; (v) management and related services; and (vi) other technical services or special studies. (2016 revised IRR, Section 5[i])

Contract – Refers to the agreement entered into between the Procuring Entity and the Supplier or Manufacturer or Distributor or Service Provider for procurement of Goods and Services; Contractor for Procurement of Infrastructure Projects; or Consultant or Consulting Firm for Procurement of Consulting Services; as the case may be, as recorded in the Contract Form signed by the parties, including all attachments and appendices thereto and all documents incorporated by reference therein.

Contractor – is a natural or juridical entity whose proposal was accepted by the Procuring Entity and to whom the Contract to execute the Work was awarded. Contractor as used in

these Bidding Documents may likewise refer to a supplier, distributor, manufacturer, or consultant.

CPI – Consumer Price Index.

DOLE – Department of Labor and Employment.

DTI – Department of Trade and Industry.

Foreign-funded Procurement or Foreign-Assisted Project –Refers to procurement whose funding source is from a foreign government, foreign or international financing institution as specified in the Treaty or International or Executive Agreement. (2016 revised IRR, Section 5[b]).

GFI – Government Financial Institution.

GOCC –Government-owned and/or –controlled corporation.

Goods – Refer to all items, supplies, materials and general support services, except Consulting Services and Infrastructure Projects, which may be needed in the transaction of public businesses or in the pursuit of any government undertaking, project or activity, whether in the nature of equipment, furniture, stationery, materials for construction, or personal property of any kind, including non-personal or contractual services such as the repair and maintenance of equipment and furniture, as well as trucking, hauling, janitorial, security, and related or analogous services, as well as procurement of materials and supplies provided by the Procuring Entity for such services. The term “related” or “analogous services” shall include, but is not limited to, lease or purchase of office space, media advertisements, health maintenance services, and other services essential to the operation of the Procuring Entity. (2016 revised IRR, Section 5[r])

GOP – Government of the Philippines.

Infrastructure Projects – Include the construction, improvement, rehabilitation, demolition, repair, restoration or maintenance of roads and bridges, railways, airports, seaports, communication facilities, civil works components of information technology projects, irrigation, flood control and drainage, water supply, sanitation, sewerage and solid waste management systems, shore protection, energy/power and electrification facilities, national buildings, school buildings, hospital buildings, and other related construction projects of the government. Also referred to as *civil works or works*. (2016 revised IRR, Section 5[u])

LGUs – Local Government Units.

NFCC – Net Financial Contracting Capacity.

NGA – National Government Agency.

PCAB – Philippine Contractors Accreditation Board.

PhilGEPS - Philippine Government Electronic Procurement System.

Procurement Project – refers to a specific or identified procurement covering goods, infrastructure project or consulting services. A Procurement Project shall be described, detailed, and scheduled in the Project Procurement Management Plan prepared by the agency which shall be consolidated in the procuring entity's Annual Procurement Plan. (GPPB Circular No. 06-2019 dated 17 July 2019)

PSA – Philippine Statistics Authority.

SEC – Securities and Exchange Commission.

SLCC – Single Largest Completed Contract.

UN – United Nations.

Section I. Invitation to Bid

Notes on the Invitation to Bid

The Invitation to Bid (IB) provides information that enables potential Bidders to decide whether to participate in the procurement at hand. The IB shall be posted in accordance with Section 21.2 of the 2016 revised IRR of RA No. 9184.

Apart from the essential items listed in the Bidding Documents, the IB should also indicate the following:

- a. The date of availability of the Bidding Documents, which shall be from the time the IB is first advertised/posted until the deadline for the submission and receipt of bids;
- b. The place where the Bidding Documents may be acquired or the website where it may be downloaded;
- c. The deadline for the submission and receipt of bids; and
- d. Any important bid evaluation criteria.

The IB should be incorporated into the Bidding Documents. The information contained in the IB must conform to the Bidding Documents and in particular to the relevant information in the Bid Data Sheet.



Republic of the Philippines
Department of Education
REGION VII – central visayas
SCHOOLS DIVISION OF NEGROS ORIENTAL

Invitation to Bid
for
CY 2021 Basic Educational Facilities Funds (BEFF)
Repair of Classroom - Savings
(Maluay Elementary School, Zamboanguita,
Negros Oriental)

1. The **Department of Education - Schools Division of Negros Oriental**, through its Bids and Awards Committee (BAC), with reference to **Sub-Allotment Release Order No. OSEC-7-21-2093**, intends to apply the savings from previous procurement activity "*CY 2021 Basic Educational Facilities Funds (BEFF) - Repair of Classrooms Lots 1 to 7*" in the amount of **Seven Million Three Hundred Thirty Three Thousand Four Hundred Twenty Four Pesos and 15/100 (Php 7,333,424.15)** being the Approved Budget for the Contract (ABC) to payments under the contract for **CY 2021 Basic Educational Facilities Funds (BEFF) Repair of Classroom - Savings (Maluay Elementary School, Zamboanguita, Negros Oriental)**. Bids received in excess of the ABC shall be automatically rejected at bid opening.
2. The **Department of Education - Schools Division of Negros Oriental** now invites bids for the above Procurement Project. Completion of the Works is required **One Hundred Fifty (150) Calendar Days**. Bidders should have completed a contract similar to the Project. The description of an eligible bidder is contained in the Bidding Documents, particularly, in Section II (Instructions to Bidders).
3. Bidding will be conducted through open competitive bidding procedures using non-discretionary "*pass/fail*" criterion as specified in the 2016 revised Implementing Rules and Regulations (IRR) of Republic Act (RA) No. 9184.
4. Interested bidders may obtain further information from the **Department of Education - Schools Division of Negros Oriental** and inspect the Bidding Documents at the address given below from **8:00 AM to 5:00 PM (Monday to Friday)**.
5. A complete set of Bidding Documents may be acquired by interested bidders on **August 25, 2021 and until the opening of bids** from given address below and upon payment of the applicable fee for the Bidding Documents, pursuant to the latest

Guidelines issued by the GPPB, in the amount of **Ten Thousand Pesos Only (Php10,000.00)**.

Interested bidders may pay the applicable fees in person or deposit their payment for the Bidding Document to our Development Bank of the Philippines (DBP) account, details as follows:

Account Name: DepEd, Division of Negros Oriental
Account Number: 0-00160-740-1

The bidder must present its proof of payment for the fees in person or email its proof of payment to this email address: **negros.oriental@deped.gov.ph** . After verification with the bank, the bidding document will be sent through email provided that the bidder shall print the bid document and submit them to the procuring entity as a requirement among others before the awarding of contract.

6. The **Department of Education - Schools Division of Negros Oriental** will hold a Pre-Bid Conference¹ on **11:00 A.M., August 31, 2021** at the Library Hub, DepEd, Schools Division of Negros Oriental, Kagawasan Avenue, Capitol Area, Daro, Dumaguete City and/or through videoconferencing/webcasting via ZOOM link which shall be open to prospective bidders, zoom link details as follows:

<https://us05web.zoom.us/j/85150827916?pwd=NGZQREFCa3ZtWEtXOWVKdWt4d1BaQT09>

Meeting ID: **851 5082 7916**
Passcode: **1T49r4**

7. Bids must be duly received by the BAC Secretariat through manual submission at the office address as indicated below, on or before **9:00 A.M., September 13, 2021**. Late bids shall not be accepted.
8. All bids must be accompanied by a bid security in any of the acceptable forms and in the amount stated in **ITB** Clause 15.
9. Bid opening shall be on **9:00 A.M., September 13, 2021** at the Conference Room, DepEd, Schools Division of Negros Oriental, Kagawasan Avenue, Capitol Area, Daro, Dumaguete City and/or through videoconferencing/webcasting via ZOOM link, details as follows:

<https://us05web.zoom.us/j/81871140330?pwd=Um1wKzRlcksvRnRKNUhTMmNWZFE5dz09>

Meeting ID: **818 7114 0330**
Passcode: **s4GP7U**

¹ May be deleted in case the ABC is less than One Million Pesos (PhP1,000,000) where the Procuring Entity may not hold a pre-bid conference.

Bids will be opened in the presence of the bidders' representatives who choose to attend the activity.

10. The **Department of Education - Schools Division of Negros Oriental** reserves the right to reject any and all bids, declare a failure of bidding, or not award the contract at any time prior to contract award in accordance with Sections 35.6 and 41 of the 2016 revised Implementing Rules and Regulations (IRR) of RA No. 9184, without thereby incurring any liability to the affected bidder or bidders.
11. For further information, please refer to:

JOELYZA M. ARCILLA, EdD, CESE
BAC Chairperson, OIC - ASDS
Schools Division of Negros Oriental
Kagawasan Avenue, Capitol Area, Daro
Dumaguete City, Negros Oriental 6200
(035) 225 1623 / www.depednegor.net

JOELYZA M. ARCILLA, EdD, CESE
OIC - Asst. Schools Division Superintendent
Chairperon, Bids & Awards Committee

Section II. Instructions to Bidders

Notes on the Instructions to Bidders

This Section on the Instruction to Bidders (ITB) provides the information necessary for bidders to prepare responsive bids, in accordance with the requirements of the Procuring Entity. It also provides information on bid submission, eligibility check, opening and evaluation of bids, post-qualification, and on the award of contract.

1. Scope of Bid

The Procuring Entity, **Department of Education - Schools Division of Negros Oriental** invites Bids for the **CY 2021 Basic Educational Facilities Funds (BEFF) Repair of Classrooms - Savings (Maluay Elementary School, Zamboanguita, Negros Oriental)**.

The Procurement Project (referred to herein as “Project”) is for the construction of Works, as described in Section VI (Specifications).

2. Funding Information

2.1. The GOP through the source of funding as indicated below for Calendar Year 2021 in the amount of **Seven Million Three Hundred Thirty Three Thousand Four Hundred Twenty Four and 15/100 pesos Only (Php7,333,424.15)**.

2.2. The source of funding is NGA, the General Appropriations Act or Special Appropriations.

3. Bidding Requirements

The Bidding for the Project shall be governed by all the provisions of RA No. 9184 and its 2016 revised IRR, including its Generic Procurement Manual and associated policies, rules and regulations as the primary source thereof, while the herein clauses shall serve as the secondary source thereof.

Any amendments made to the IRR and other GPPB issuances shall be applicable only to the ongoing posting, advertisement, or invitation to bid by the BAC through the issuance of a supplemental or bid bulletin.

The Bidder, by the act of submitting its Bid, shall be deemed to have inspected the site, determined the general characteristics of the contracted Works and the conditions for this Project, such as (a) the location and the nature of the work; (b) climatic conditions; (c) transportation facilities; (d) nature and condition of the terrain, geological conditions at the site communication facilities, requirements, location and availability of construction aggregates and other materials, labor, water, electric power and access roads; and (e) other factors that may affect the cost, duration and execution or implementation of the contract, project, or work and examine all instructions, forms, terms, and project requirements in the Bidding Documents.

4. Corrupt, Fraudulent, Collusive, Coercive, and Obstructive Practices

The Procuring Entity, as well as the Bidders and Contractors, shall observe the highest standard of ethics during the procurement and execution of the contract. They or through an agent shall not engage in corrupt, fraudulent, collusive, coercive, and

obstructive practices defined under Annex “I” of the 2016 revised IRR of RA No. 9184 or other integrity violations in competing for the Project.

5. Eligible Bidders

- 5.1. Only Bids of Bidders found to be legally, technically, and financially capable will be evaluated.
- 5.2. The Bidder must have an experience of having completed a Single Largest Completed Contract (SLCC) that is similar to this Project, equivalent to at least fifty percent (50%) of the ABC adjusted, if necessary, by the Bidder to current prices using the PSA’s CPI, except under conditions provided for in Section 23.4.2.4 of the 2016 revised IRR of RA No. 9184.

A contract is considered to be “similar” to the contract to be bid if it has the major categories of work stated in the **BDS**.

- 5.3. For Foreign-funded Procurement, the Procuring Entity and the foreign government/foreign or international financing institution may agree on another track record requirement, as specified in the Bidding Document prepared for this purpose.
- 5.4. The Bidders shall comply with the eligibility criteria under Section 23.4.2 of the 2016 IRR of RA No. 9184.

6. Origin of Associated Goods

There is no restriction on the origin of Goods other than those prohibited by a decision of the UN Security Council taken under Chapter VII of the Charter of the UN.

7. Subcontracts

- 7.1. The Procuring Entity has prescribed that **Subcontracting is not allowed**.

8. Pre-Bid Conference

The Procuring Entity will hold a pre-bid conference for this Project on the specified date and time and either at its physical address and/or through videoconferencing / webcasting as indicated in paragraph 6 of the **IB**.

9. Clarification and Amendment of Bidding Documents

Prospective bidders may request for clarification on and/or interpretation of any part of the Bidding Documents. Such requests must be in writing and received by the

Procuring Entity, either at its given address or through electronic mail indicated in the **IB**, at least ten (10) calendar days before the deadline set for the submission and receipt of Bids.

10. Documents Comprising the Bid: Eligibility and Technical Components

- 10.1. The first envelope shall contain the eligibility and technical documents of the Bid as specified in **Section IX. Checklist of Technical and Financial Documents**.
- 10.2. If the eligibility requirements or statements, the bids, and all other documents for submission to the BAC are in foreign language other than English, it must be accompanied by a translation in English, which shall be authenticated by the appropriate Philippine foreign service establishment, post, or the equivalent office having jurisdiction over the foreign bidder's affairs in the Philippines. For Contracting Parties to the Apostille Convention, only the translated documents shall be authenticated through an apostille pursuant to GPPB Resolution No. 13-2019 dated 23 May 2019. The English translation shall govern, for purposes of interpretation of the bid.
- 10.3. A valid PCAB License is required, and in case of joint ventures, a valid special PCAB License, and registration for the type and cost of the contract for this Project. Any additional type of Contractor license or permit shall be indicated in the **BDS**.
- 10.4. A List of Contractor's key personnel (e.g., Project Manager, Project Engineers, Materials Engineers, and Foremen) assigned to the contract to be bid, with their complete qualification and experience data shall be provided. These key personnel must meet the required minimum years of experience set in the **BDS**.
- 10.5. A List of Contractor's major equipment units, which are owned, leased, and/or under purchase agreements, supported by proof of ownership, certification of availability of equipment from the equipment lessor/vendor for the duration of the project, as the case may be, must meet the minimum requirements for the contract set in the **BDS**.

11. Documents Comprising the Bid: Financial Component

- 11.1. The second bid envelope shall contain the financial documents for the Bid as specified in **Section IX. Checklist of Technical and Financial Documents**.
- 11.2. Any bid exceeding the ABC indicated in paragraph 1 of the **IB** shall not be accepted.

- 11.3. For Foreign-funded procurement, a ceiling may be applied to bid prices provided the conditions are met under Section 31.2 of the 2016 revised IRR of RA No. 9184.

12. Alternative Bids

Bidders shall submit offers that comply with the requirements of the Bidding Documents, including the basic technical design as indicated in the drawings and specifications. Unless there is a value engineering clause in the **BDS**, alternative Bids shall not be accepted.

13. Bid Prices

All bid prices for the given scope of work in the Project as awarded shall be considered as fixed prices, and therefore not subject to price escalation during contract implementation, except under extraordinary circumstances as determined by the NEDA and approved by the GPPB pursuant to the revised Guidelines for Contract Price Escalation guidelines.

14. Bid and Payment Currencies

14.1. Bid prices may be quoted in the local currency or tradeable currency accepted by the BSP at the discretion of the Bidder. However, for purposes of bid evaluation. Bids denominated in foreign currencies shall be converted to Philippines currency based on the exchange rate as published in the BSP reference rate bulletin on the day of the bid opening.

14.2. Payment of the contract price shall be made in Philippine Pesos.

15. Bid Security

15.1. The Bidder shall submit a Bid Securing Declaration or any form of Bid Security in the amount indicated in the **BDS**, which shall be not less than the percentage of the ABC in accordance with the schedule in the **BDS**.

15.2. The Bid and bid security shall be valid One Hundred Twenty (120) Calendar Days from the opening of bids. Any bid not accompanied by an acceptable bid security shall be rejected by the Procuring Entity as non-responsive.

16. Sealing and Marking of Bids

Each Bidder shall submit one copy of the first and second components of its Bid.

The Procuring Entity may request additional hard copies and/or electronic copies of the Bid. However, failure of the Bidders to comply with the said request shall not be a ground for disqualification.

If the Procuring Entity allows the submission of bids through online submission to the given website or any other electronic means, the Bidder shall submit an electronic copy of its Bid, which must be digitally signed. An electronic copy that cannot be opened or is corrupted shall be considered non-responsive and, thus, automatically disqualified.

17. Deadline for Submission of Bids

The Bidders shall submit on the specified date and time and either at its physical address or through online submission as indicated in paragraph 7 of the **IB**.

18. Opening and Preliminary Examination of Bids

18.1. The BAC shall open the Bids in public at the time, on the date, and at the place specified in paragraph 9 of the **IB**. The Bidders' representatives who are present shall sign a register evidencing their attendance. In case videoconferencing, webcasting or other similar technologies will be used, attendance of participants shall likewise be recorded by the BAC Secretariat.

In case the Bids cannot be opened as scheduled due to justifiable reasons, the rescheduling requirements under Section 29 of the 2016 revised IRR of RA No. 9184 shall prevail.

18.2. The preliminary examination of Bids shall be governed by Section 30 of the 2016 revised IRR of RA No. 9184.

19. Detailed Evaluation and Comparison of Bids

19.1. The Procuring Entity's BAC shall immediately conduct a detailed evaluation of all Bids rated "*passed*" using non-discretionary pass/fail criteria. The BAC shall consider the conditions in the evaluation of Bids under Section 32.2 of 2016 revised IRR of RA No. 9184.

19.2. If the Project allows partial bids, all Bids and combinations of Bids as indicated in the **BDS** shall be received by the same deadline and opened and evaluated simultaneously so as to determine the Bid or combination of Bids offering the lowest calculated cost to the Procuring Entity. Bid Security as required by **ITB** Clause 15 shall be submitted for each contract (lot) separately.

19.3. In all cases, the NFCC computation pursuant to Section 23.4.2.6 of the 2016 revised IRR of RA No. 9184 must be sufficient for the total of the ABCs for all the lots participated in by the prospective Bidder.

20. Post Qualification

Within a non-extendible period of five (5) calendar days from receipt by the Bidder of the notice from the BAC that it submitted the Lowest Calculated Bid, the Bidder shall submit its latest income and business tax returns filed and paid through the BIR Electronic Filing and Payment System (eFPS), and other appropriate licenses and permits required by law and stated in the **BDS**.

21. Signing of the Contract

The documents required in Section 37.2 of the 2016 revised IRR of RA No. 9184 shall form part of the Contract. Additional Contract documents are indicated in the **BDS**.

Section III. Bid Data Sheet

Notes on the Bid Data Sheet (BDS)

The Bid Data Sheet (BDS) consists of provisions that supplement, amend, or specify in detail, information, or requirements included in the ITB found in Section II, which are specific to each procurement.

This Section is intended to assist the Procuring Entity in providing the specific information in relation to corresponding clauses in the ITB and has to be prepared for each specific procurement.

The Procuring Entity should specify in the BDS information and requirements specific to the circumstances of the Procuring Entity, the processing of the procurement, and the bid evaluation criteria that will apply to the Bids. In preparing the BDS, the following aspects should be checked:

- a. Information that specifies and complements provisions of the ITB must be incorporated.
- b. Amendments and/or supplements, if any, to provisions of the ITB as necessitated by the circumstances of the specific procurement, must also be incorporated.

Bid Data Sheet

ITB Clause																			
3	<p>The Procuring Entity requires that interested bidder MUST secure the Certificate of Site Inspection signed by the respective School Head or its Representative of the school beneficiary, Maluay Elementary School, Zamboanguita, Negros Oriental.</p> <p>Standard Form of the Certificate of Site Inspection can be found in ANNEX A and can also be acquired upon purchase of the bid document.</p> <p>Duly signed Certificate of Site Inspection is among the documents required by the procuring entity and must be included in the Technical Component Envelope as specified in Section IX. Checklist of Technical and Financial Documents.</p>																		
5.2	<p>For this purpose, contracts similar to the Project refer to contracts which have the same major categories of work, which shall be but not limited to:</p> <ol style="list-style-type: none"> 1. Earth Works 2. Concreting Works 4. Rebar Works 5. Formworks 6. Doors and Windows 7. Steel Works 8. Roofing Works 9. Ceiling and Carpentry Works 10. Electrical Works 11. Plumbing Works / Sanitary Works 12. Painting Works 13. Ramp on fill (with Ramp Railing) 																		
7.1	Subcontracting is not allowed.																		
10.3	No further instructions.																		
10.4	<p>The key personnel must meet the required minimum years of experience set below:</p> <table border="1" style="margin-left: auto; margin-right: auto; border-collapse: collapse; text-align: center;"> <thead> <tr> <th style="padding: 5px;">KEY PERSONNEL</th> <th style="padding: 5px;">Number of Years of Relevant Experience</th> </tr> </thead> <tbody> <tr> <td style="padding: 5px;">1. Project Engineer</td> <td style="padding: 5px;">At least 1 year experience</td> </tr> <tr> <td style="padding: 5px;">2. General Foreman</td> <td style="padding: 5px;">At least 1 year experience</td> </tr> <tr> <td style="padding: 5px;">3. Welder</td> <td style="padding: 5px;">At least 1 year experience</td> </tr> <tr> <td style="padding: 5px;">4. Carpenter</td> <td style="padding: 5px;">At least 1 year experience</td> </tr> <tr> <td style="padding: 5px;">5. Plumber</td> <td style="padding: 5px;">At least 1 year experience</td> </tr> <tr> <td style="padding: 5px;">6. Mason</td> <td style="padding: 5px;">At least 1 year experience</td> </tr> <tr> <td style="padding: 5px;">7. Painter</td> <td style="padding: 5px;">At least 1 year experience</td> </tr> <tr> <td style="padding: 5px;">8. Electrician</td> <td style="padding: 5px;">At least 1 year experience</td> </tr> </tbody> </table>	KEY PERSONNEL	Number of Years of Relevant Experience	1. Project Engineer	At least 1 year experience	2. General Foreman	At least 1 year experience	3. Welder	At least 1 year experience	4. Carpenter	At least 1 year experience	5. Plumber	At least 1 year experience	6. Mason	At least 1 year experience	7. Painter	At least 1 year experience	8. Electrician	At least 1 year experience
KEY PERSONNEL	Number of Years of Relevant Experience																		
1. Project Engineer	At least 1 year experience																		
2. General Foreman	At least 1 year experience																		
3. Welder	At least 1 year experience																		
4. Carpenter	At least 1 year experience																		
5. Plumber	At least 1 year experience																		
6. Mason	At least 1 year experience																		
7. Painter	At least 1 year experience																		
8. Electrician	At least 1 year experience																		

10.5	<p>The minimum major equipment requirements are the following:</p> <ol style="list-style-type: none"> 1. Hand Tools 2. One Bagger Cement Mixer 3. Welding Machine 4. Steel Bar Cutter 								
12	No further instructions								
15.1	<p>The bidder shall submit a Bid Securing Declaration, or any form of Bid Security, in an amount not less than the required percentage of the ABC in accordance with the following schedule:</p> <table border="1" data-bbox="358 625 1406 1325"> <thead> <tr> <th data-bbox="358 625 862 737">Form of Bid Security</th> <th data-bbox="862 625 1406 737">Amount of Bid Security (Not less than the required percentage of the ABC)</th> </tr> </thead> <tbody> <tr> <td data-bbox="358 737 862 848">a. Cash or cashier's/manager's check issued by a Universal or Commercial Bank.</td> <td data-bbox="862 737 1406 848" style="text-align: center;">Two percent (2%)</td> </tr> <tr> <td data-bbox="358 848 862 1142">b. Bank draft/guarantee or irrevocable letter of credit issued by a Universal or Commercial Bank: Provided, however, That it shall be confirmed or authenticated by a Universal pr Commercial Bank, if issued by a foreign bank</td> <td data-bbox="862 848 1406 1142" style="text-align: center;">Two percent (2%)</td> </tr> <tr> <td data-bbox="358 1142 862 1325">c. Surety bond callable upon demand issued by a surety or insurance company duly certified by the Insurance Commission as authorized to issue such security.</td> <td data-bbox="862 1142 1406 1325" style="text-align: center;">Five percent (5%)</td> </tr> </tbody> </table>	Form of Bid Security	Amount of Bid Security (Not less than the required percentage of the ABC)	a. Cash or cashier's/manager's check issued by a Universal or Commercial Bank.	Two percent (2%)	b. Bank draft/guarantee or irrevocable letter of credit issued by a Universal or Commercial Bank: Provided, however, That it shall be confirmed or authenticated by a Universal pr Commercial Bank, if issued by a foreign bank	Two percent (2%)	c. Surety bond callable upon demand issued by a surety or insurance company duly certified by the Insurance Commission as authorized to issue such security.	Five percent (5%)
Form of Bid Security	Amount of Bid Security (Not less than the required percentage of the ABC)								
a. Cash or cashier's/manager's check issued by a Universal or Commercial Bank.	Two percent (2%)								
b. Bank draft/guarantee or irrevocable letter of credit issued by a Universal or Commercial Bank: Provided, however, That it shall be confirmed or authenticated by a Universal pr Commercial Bank, if issued by a foreign bank	Two percent (2%)								
c. Surety bond callable upon demand issued by a surety or insurance company duly certified by the Insurance Commission as authorized to issue such security.	Five percent (5%)								
16	<p>Bidders shall enclose their original eligibility and technical documents described in ITB Clause 10, in one sealed envelope marked "ORIGINAL - TECHNICAL COMPONENT," and the original of their financial component in another sealed envelope marked "ORIGINAL - FINANCIAL COMPONENT," sealing them all in an outer envelope marked "ORIGINAL BID."</p> <p>Bidders are required to provide only a single copy of the Technical Component and the Financial Component envelopes shall be similarly sealed duly marking the inner envelopes as "COPY NO. 1 - TECHNICAL COMPONENT" and "COPY NO. 1 – FINANCIAL COMPONENT" respectively. These envelopes containing the original and the copy shall then be enclosed in one single envelope.</p>								

	<p>The original and the copy 1 of the bid shall be typed or written in ink and shall be signed by the Bidder or its duly authorized representative/s.</p> <p>All envelopes shall:</p> <ul style="list-style-type: none"> (a) contain the name of the contract to be bid in capital letters; (b) bear the name and address of the Bidder in capital letters; (c) be addressed to the Procuring Entity’s Bids and Awards Committee BAC, as indicated in paragraph 11 of the IB. (d) bear the specific identification of this bidding process indicated in the ITB Clause 1 and paragraph 1 & 2 of the IB; and (e) bear a warning “DO NOT OPEN BEFORE...” the date and time for the opening of bids, in accordance with ITB Clause 17 and paragraph 7 of the IB. <p>Unsealed or unmarked bid envelopes shall be rejected. However, bid envelopes that are not properly sealed and marked, as required in the Bidding Documents, shall be accepted, provided that the bidder or its duly authorized representative shall acknowledge such condition of the bid as submitted. The BAC shall assume no responsibility for the misplacement of the contents of the improperly sealed or marked bid, or for its premature opening. <i>(Section 25.9 of the Revised 2016 IRR of RA 9184, 8th Edition)</i></p> <p>An illustration for marking and sealing of Technical and Financial Envelopes can be found in ANNEX C.</p>
19.2	<p>No partial bid is allowed. The project has Seven (7) lots in total and each lot shall not be divided into sub-lots for the purpose of bidding, evaluation, and contract award.</p>
20	<p>The BAC shall determine to its satisfaction whether the Bidder that is evaluated as having submitted the Lowest Calculated Bid complies with and is responsive to all the requirements and conditions specified in ITB Clauses 5, 10, and 11</p> <p>List of Licenses and permits relevant to the Project and the corresponding law or corresponding LGUs that may be required but not limited to:</p> <ol style="list-style-type: none"> 1. Environmental Compliance Certificate 2. Certificate that the project site is not within a geohazard zone 3. Fire Safety Certificate 4. Electrical Permit, etc.

21	Additional contract documents relevant to the Project that may be required by existing laws and/or the Procuring Entity, such as construction schedule and S-curve, manpower schedule, construction methods, equipment utilization schedule, construction safety and health program approved by the DOLE, and other acceptable tools of project scheduling.
----	---

Section IV. General Conditions of Contract

Notes on the General Conditions of Contract

The General Conditions of Contract (GCC) in this Section, read in conjunction with the Special Conditions of Contract in Section V and other documents listed therein, should be a complete document expressing all the rights and obligations of the parties.

Matters governing performance of the Contractor, payments under the contract, or matters affecting the risks, rights, and obligations of the parties under the contract are included in the GCC and Special Conditions of Contract.

Any complementary information, which may be needed, shall be introduced only through the Special Conditions of Contract.

1. **Scope of Contract**

This Contract shall include all such items, although not specifically mentioned, that can be reasonably inferred as being required for its completion as if such items were expressly mentioned herein. All the provisions of RA No. 9184 and its 2016 revised IRR, including the Generic Procurement Manual, and associated issuances, constitute the primary source for the terms and conditions of the Contract, and thus, applicable in contract implementation. Herein clauses shall serve as the secondary source for the terms and conditions of the Contract.

This is without prejudice to Sections 74.1 and 74.2 of the 2016 revised IRR of RA No. 9184 allowing the GPPB to amend the IRR, which shall be applied to all procurement activities, the advertisement, posting, or invitation of which were issued after the effectivity of the said amendment.

2. **Sectional Completion of Works**

If sectional completion is specified in the **Special Conditions of Contract (SCC)**, references in the Conditions of Contract to the Works, the Completion Date, and the Intended Completion Date shall apply to any Section of the Works (other than references to the Completion Date and Intended Completion Date for the whole of the Works).

3. **Possession of Site**

3.1 The Procuring Entity shall give possession of all or parts of the Site to the Contractor based on the schedule of delivery indicated in the **SCC**, which corresponds to the execution of the Works. If the Contractor suffers delay or incurs cost from failure on the part of the Procuring Entity to give possession in accordance with the terms of this clause, the Procuring Entity's Representative shall give the Contractor a Contract Time Extension and certify such sum as fair to cover the cost incurred, which sum shall be paid by Procuring Entity.

3.2 If possession of a portion is not given by the above date, the Procuring Entity will be deemed to have delayed the start of the relevant activities. The resulting adjustments in contract time to address such delay may be addressed through contract extension provided under Annex "E" of the 2016 revised IRR of RA No. 9184.

4. **The Contractor's Obligations**

The Contractor shall employ the key personnel named in the Schedule of Key Personnel indicating their designation, in accordance with **ITB** Clause 10.3 and specified in the **BDS**, to carry out the supervision of the Works.

The Procuring Entity will approve any proposed replacement of key personnel only if their relevant qualifications and abilities are equal to or better than those of the personnel listed in the Schedule.

5. Performance Security

5.1. Within ten (10) calendar days from receipt of the Notice of Award from the Procuring Entity but in no case later than the signing of the contract by both parties, the successful Bidder shall furnish the performance security in any of the forms prescribed in Section 39 of the 2016 revised IRR.

5.2. The Contractor, by entering into the Contract with the Procuring Entity, acknowledges the right of the Procuring Entity to institute action pursuant to RA No. 3688 against any subcontractor be they an individual, firm, partnership, corporation, or association supplying the Contractor with labor, materials and/or equipment for the performance of this Contract.

6. Site Investigation Reports

The Contractor, in preparing the Bid, shall rely on any Site Investigation Reports referred to in the SCC supplemented by any information obtained by the Contractor.

7. Warranty

7.1. In case the Contractor fails to undertake the repair works under Section 62.2.2 of the 2016 revised IRR, the Procuring Entity shall forfeit its performance security, subject its property(ies) to attachment or garnishment proceedings, and perpetually disqualify it from participating in any public bidding. All payables of the GOP in his favor shall be offset to recover the costs.

7.2. The warranty against Structural Defects/Failures, except that occasioned-on force majeure, shall cover the period from the date of issuance of the Certificate of Final Acceptance by the Procuring Entity. Specific duration of the warranty is found in the SCC.

8. Liability of the Contractor

Subject to additional provisions, if any, set forth in the SCC, the Contractor's liability under this Contract shall be as provided by the laws of the Republic of the Philippines.

If the Contractor is a joint venture, all partners to the joint venture shall be jointly and severally liable to the Procuring Entity.

9. Termination for Other Causes

Contract termination shall be initiated in case it is determined *prima facie* by the Procuring Entity that the Contractor has engaged, before, or during the implementation of the contract, in unlawful deeds and behaviors relative to contract acquisition and implementation, such as, but not limited to corrupt, fraudulent, collusive, coercive, and obstructive practices as stated in **ITB** Clause 4.

10. Dayworks

Subject to the guidelines on Variation Order in Annex “E” of the 2016 revised IRR of RA No. 9184, and if applicable as indicated in the **SCC**, the Dayworks rates in the Contractor’s Bid shall be used for small additional amounts of work only when the Procuring Entity’s Representative has given written instructions in advance for additional work to be paid for in that way.

11. Program of Work

11.1. The Contractor shall submit to the Procuring Entity’s Representative for approval the said Program of Work showing the general methods, arrangements, order, and timing for all the activities in the Works. The submissions of the Program of Work are indicated in the **SCC**.

11.2. The Contractor shall submit to the Procuring Entity’s Representative for approval an updated Program of Work at intervals no longer than the period stated in the **SCC**. If the Contractor does not submit an updated Program of Work within this period, the Procuring Entity’s Representative may withhold the amount stated in the **SCC** from the next payment certificate and continue to withhold this amount until the next payment after the date on which the overdue Program of Work has been submitted.

12. Instructions, Inspections and Audits

The Contractor shall permit the GOP or the Procuring Entity to inspect the Contractor’s accounts and records relating to the performance of the Contractor and to have them audited by auditors of the GOP or the Procuring Entity, as may be required.

13. Advance Payment

The Procuring Entity shall, upon a written request of the Contractor which shall be submitted as a Contract document, make an advance payment to the Contractor in an amount not exceeding fifteen percent (15%) of the total contract price, to be made in lump sum, or at the most two installments according to a schedule specified in the

SCC, subject to the requirements in Annex “E” of the 2016 revised IRR of RA No. 9184.

14. Progress Payments

The Contractor may submit a request for payment for Work accomplished. Such requests for payment shall be verified and certified by the Procuring Entity’s Representative/Project Engineer. Except as otherwise stipulated in the SCC, materials and equipment delivered on the site but not completely put in place shall not be included for payment.

15. Operating and Maintenance Manual

- 15.1. If required, the Contractor will provide “as built” Drawings and/or operating and maintenance manuals as specified in the SCC.
- 15.2. If the Contractor does not provide the Drawings and/or manuals by the dates stated above, or they do not receive the Procuring Entity’s Representative’s approval, the Procuring Entity’s Representative may withhold the amount stated in the SCC from payments due to the Contractor.

16. Insurance

- 16.1. The Contractor shall under his name and at his own expense, obtain and maintain, for the duration of this Contract, the Contractor's All Risk Insurance (CARI) coverage.
- 16.2. The Contractor shall provide evidence to the Procuring Entity’s Representative that the insurances required under this Contract have been effected and shall, within a reasonable time, provide copies of the insurance policies to the Procuring Entity’s Representative. Such evidence and such policies shall be provided to the Procuring Entity’s through the Procuring Entity’s Representative.
- 16.3. The Contractor shall notify the insurers of changes in the nature, extent, or program for the execution of the Works and ensure the adequacy of the insurances at all times in accordance with the terms of this Contract and shall produce to the Procuring Entity’s Representative the insurance policies in force including the receipts for payment of the current premiums.

The above insurance policies shall be obtained from any reputable insurance company approved by the Procuring Entity’s Representative.

- 16.4. If the Contractor fails to obtain and keep in force the insurances referred to herein or any other insurance which he may be required to obtain under the terms of this Contract, the Procuring Entity may obtain and keep in force any

such insurances and pay such premiums as may be necessary for the purpose. From time to time, the Procuring Entity may deduct the amount it shall pay for said premiums including twenty-five percent (25%) therein from any monies due, or which may become due, to the Contractor, without prejudice to the Procuring Entity exercising its right to impose other sanctions against the Contractor pursuant to the provisions of this Contract.

- 16.5. In the event the Contractor fails to observe the above safeguards, the Procuring

Entity may, at the Contractor's expense, take whatever measure is deemed necessary for its protection and that of the Contractor's personnel and third parties, and/or order the interruption of dangerous Works. In addition, the Procuring Entity may refuse to make the payments under GCC Clause 40 until the Contractor complies with this Clause.

- 16.6. The Contractor shall immediately replace the insurance policy obtained as required in this Contract, without need of the Procuring Entity's demand, with a new policy issued by a new insurance company acceptable to the Procuring Entity for any of the following grounds:

- (a) The issuer of the insurance policy to be replaced has:
- (i) become bankrupt;
 - (ii) been placed under receivership or under a management committee;
 - (iii) been sued for suspension of payment; or
 - (iv) been suspended by the Insurance Commission and its license to engage in business or its authority to issue insurance policies cancelled; or
 - (v) Where reasonable grounds exist that the insurer may not be able, fully and promptly, to fulfill its obligation under the

Section V. Special Conditions of Contract

Notes on the Special Conditions of Contract

Similar to the BDS, the clauses in this Section are intended to assist the Procuring Entity in providing contract-specific information in relation to corresponding clauses in the GCC found in Section IV.

The Special Conditions of Contract (SCC) complement the GCC, specifying contractual requirements linked to the special circumstances of the Procuring Entity, the Procuring Entity's country, the sector, and the Works procured. In preparing this Section, the following aspects should be checked:

- a. Information that complements provisions of the GCC must be incorporated.
- b. Amendments and/or supplements to provisions of the GCC as necessitated by the circumstances of the specific purchase, must also be incorporated.

However, no special condition which defeats or negates the general intent and purpose of the provisions of the GCC should be incorporated herein.

Special Conditions of Contract

GCC Clause	
2	No further instructions.
4.1	No further instructions.
6	No further instructions.
7.2	In case of permanent structures, such as buildings of types 4 and 5 as classified under the National Building Code of the Philippines and other structures made of steel, iron, or concrete which comply with relevant structural codes (e.g., DPWH Standard Specifications), such as, but not limited to, steel/concrete bridges, flyovers, aircraft movement areas, ports, dams, tunnels, filtration and treatment plants, sewerage systems, power plants, transmission and communication towers, railway system, and other similar permanent structures: Fifteen (15) years.
10	No dayworks are applicable to the contract.
11.1	The Contractor shall submit the Program of Work to the Procuring Entity's Representative within <i>[insert number]</i> days of delivery of the Notice of Award.
11.2	The amount to be withheld for late submission of an updated Program of Work is <i>[insert amount]</i> .
13	The amount of the advance payment is 15% of the total contract price and schedule of payment.
14	Materials and equipment delivered on the site but not completely put in place shall not be included for payment.
15.1	The date by which operating and maintenance manuals are required is <i>[date]</i> . The date by which "as built" drawings are required is <i>[date]</i> .

15.2	The amount to be withheld for failing to produce “as built” drawings and/or operating and maintenance manuals by the date required is <i>[amount in local currency]</i> .
16.1	<p>All Department of Education implemented infrastructure projects are required to be covered by Contractor's All Risk Insurance (CARI) as specified in OUA MEMO 00-0121-081 Memorandum found in ANNEX C.</p> <p>Contractor's All Risk Insurance (CARI) are among the documents required prior to awarding of contract.</p>

Section VI. Specifications

Notes on Specifications

A set of precise and clear specifications is a prerequisite for Bidders to respond realistically and competitively to the requirements of the Procuring Entity without qualifying or conditioning their Bids. In the context of international competitive bidding, the specifications must be drafted to permit the widest possible competition and, at the same time, present a clear statement of the required standards of workmanship, materials, and performance of the goods and services to be procured. Only if this is done will the objectives of economy, efficiency, and fairness in procurement be realized, responsiveness of Bids be ensured, and the subsequent task of bid evaluation facilitated. The specifications should require that all goods and materials to be incorporated in the Works be new, unused, of the most recent or current models, and incorporate all recent improvements in design and materials unless provided otherwise in the Contract.

Samples of specifications from previous similar projects are useful in this respect. The use of metric units is mandatory. Most specifications are normally written specially by the Procuring Entity or its representative to suit the Works at hand. There is no standard set of Specifications for universal application in all sectors in all regions, but there are established principles and practices, which are reflected in these PBDs.

There are considerable advantages in standardizing General Specifications for repetitive Works in recognized public sectors, such as highways, ports, railways, urban housing, irrigation, and water supply, in the same country or region where similar conditions prevail. The General Specifications should cover all classes of workmanship, materials, and equipment commonly involved in construction, although not necessarily to be used in a particular Works Contract. Deletions or addenda should then adapt the General Specifications to the particular Works.

Care must be taken in drafting specifications to ensure that they are not restrictive. In the specification of standards for goods, materials, and workmanship, recognized international standards should be used as much as possible. Where other particular standards are used, whether national standards or other standards, the specifications should state that goods, materials, and workmanship that meet other authoritative standards, and which ensure substantially equal or higher quality than the standards mentioned, will also be acceptable. The following clause may be inserted in the SCC.

Sample Clause: Equivalency of Standards and Codes

Wherever reference is made in the Contract to specific standards and codes to be met by the goods and materials to be furnished, and work performed or tested, the provisions of the latest current edition or revision of the relevant standards and codes in effect shall

apply, unless otherwise expressly stated in the Contract. Where such standards and codes are national, or relate to a particular country or region, other authoritative standards that ensure a substantially equal or higher quality than the standards and codes specified will be accepted subject to the Procuring Entity's Representative's prior review and written consent. Differences between the standards specified and the proposed alternative standards shall be fully described in writing by the Contractor and submitted to the Procuring Entity's Representative at least twenty-eight (28) days prior to the date when the Contractor desires the Procuring Entity's Representative's consent. In the event the Procuring Entity's Representative determines that such proposed deviations do not ensure substantially equal or higher quality, the Contractor shall comply with the standards specified in the documents.

These notes are intended only as information for the Procuring Entity or the person drafting the Bidding Documents. They should not be included in the final Bidding Documents.

Interested bidders will be provided an electronic soft copy (MS Excel file format) of the Blank Program of Works - Bill of Quantities & Detailed Estimates upon purchase of the bid document.

**BLANK PROGRAM OF WORKS
BILL OF QUANTITIES
&
DETAILED COST ESTIMATES**

**MALUAY ELEMENTARY SCHOOL
ZAMBOANGUITA, NEGROS ORIENTAL**

CONTRACTOR'S LOGO

PROGRAM OF WORKS BILL OF QUANTITIES REPAIR 2021 - RVII - Negros Oriental - (Savings)

School: MALUAY ELEMENTARY SCHOOL			Date: August 3, 2021			
School ID: 120650			Budget Allocation:		PHP 7,333,424.15	
Region: GION VII - CENTRAL VISAYAS			Engineering and Administrative Overhead:			
Division : NEGROS ORIENTAL			Approved Budget for Contract:		PHP 7,333,424.15	
Project Title:			Completion Period: 150 calendar days			
REPAIR AND REHABILITATION OF SCHOOL BUILDINGS (17 CLASSROOMS)			Minimum Required Manpower:			
			General Foreman Helper	Welder Mason	Carpenter Painter	Plumber Electrician
Plan:			Minimum Required Equipment:			
Location: ZAMBOANGUITA, NEGROS ORIENTAL			Hand Tools		Welding Machine	
			One-Bagger Mixer		Bar Cutter	
Item NO.	Item Description	% of Total	Unit	Quantity	Total Cost	Remarks
	I. DIRECT COST					
A	GENERAL REQUIREMENTS		lot	1.00	0.00	
BUILDING 1 : ONE UNIT - THREE CLASSROOM BLSB TYPE BUILDING TEEP REPAIRED (BUILDING 2) - 3 CL						
1.00	Earthworks		lot	1.00	0.00	
2.00	Concreting Works		lot	1.00	0.00	
3.00	Rebar Works		lot	1.00	0.00	
4.00	Formworks		lot	1.00	0.00	
5.00	Masonry Works		lot	1.00	0.00	
6.00	Doors and Windows		lot	1.00	0.00	
7.00	Steel Works		lot	1.00	0.00	
8.00	Roofing Works		lot	1.00	0.00	
9.00	Ceiling and Carpentry Works		lot	1.00	0.00	
10.00	Electrical Works		lot	1.00	0.00	
12.00	Plumbing Works/ Sanitary Works		lot	1.00	0.00	
13.00	Painting Works		lot	1.00	0.00	
	Ramp on Fill (with Ramp Railing)		lot	1.00	0.00	
BUILDING 2: ONE UNIT - SCIENCE LABORATORY BUILDING UTILIZED AS DISTRICT OFFICE (BUILDING 3) - 1 CL						
5.00	Masonry Works		lot	1.00	0.00	
9.00	Ceiling and Carpentry Works		lot	1.00	0.00	
13.00	Painting Works		lot	1.00	0.00	

	Ramp on Fill (with Ramp Railing)		lot	1.00	0.00
BUILDING 3 : ONE UNIT FIVE (5) - SEATER TOILET (BUILDING 5)					
2.00	Concreting Works		lot	1.00	0.00
5.00	Masonry Works		lot	1.00	0.00
6.00	Doors and Windows		lot	1.00	0.00
8.00	Roofing Works		lot	1.00	0.00
9.00	Ceiling and Carpentry Works		lot	1.00	0.00
10.00	Electrical Works		lot	1.00	0.00
	Plumbing Works/ Sanitary Works		lot	1.00	0.00
13.00	Painting Works		lot	1.00	0.00
	Ramp on Fill (with Ramp Railing)		lot	1.00	0.00
14.00	Tile Works		lot	1.00	0.00
BUILDING 4: ONE UNIT - THREE CLASSROOMS BAGONG LIPUNAN TYPE I SCHOOL BUILDING (BUILDING 6) - 3 CL					
1.00	Earthworks		lot	1.00	0.00
2.00	Concreting Works		lot	1.00	0.00
3.00	Rebar Works		lot	1.00	0.00
4.00	Formworks		lot	1.00	0.00
5.00	Masonry Works		lot	1.00	0.00
6.00	Doors and Windows		lot	1.00	0.00
7.00	Steel Works		lot	1.00	0.00
8.00	Roofing Works		lot	1.00	0.00
9.00	Ceiling and Carpentry Works		lot	1.00	0.00
10.00	Electrical Works		lot	1.00	0.00
	Plumbing Works/ Sanitary Works		lot	1.00	0.00
13.00	Painting Works		lot	1.00	0.00
	Ramp on Fill (with Ramp Railing)		lot	1.00	0.00
BUILDING 5: ONE UNIT - TWO CLASSROOMS ARMY TYPE BUILDING (BUILDING 7) - 2 CL					
1.00	Earthworks		lot	1.00	0.00
2.00	Concreting Works		lot	1.00	0.00
3.00	Rebar Works		lot	1.00	0.00
4.00	Formworks		lot	1.00	0.00
5.00	Masonry Works		lot	1.00	0.00
6.00	Doors and Windows		lot	1.00	0.00
7.00	Steel Works		lot	1.00	0.00
8.00	Roofing Works		lot	1.00	0.00
9.00	Ceiling and Carpentry Works		lot	1.00	0.00
10.00	Electrical Works		lot	1.00	0.00
13.00	Painting Works		lot	1.00	0.00
	Ramp on Fill (with Ramp Railing)		lot	1.00	0.00
BUILDING 6 : ONE UNIT - ONE CLASSROOM FVR BUILDING (BUILDING 8) - 1 CL					
5.00	Masonry Works		lot	1.00	0.00
6.00	Doors and Windows		lot	1.00	0.00
7.00	Steel Works		lot	1.00	0.00
8.00	Roofing Works		lot	1.00	0.00

9.00	Ceiling and Carpentry Works		lot	1.00	0.00
10.00	Electrical Works		lot	1.00	0.00
	Plumbing Works/ Sanitary Works		lot	1.00	0.00
13.00	Painting Works		lot	1.00	0.00
	Ramp on Fill (with Ramp Railing)		lot	1.00	0.00
BUILDING 7 : ONE UNIT - ONE CLASSROOM PRE - SCHOOL BUILDING (BUILDING 13) - 1 CL					
6.00	Doors and Windows		lot	1.00	0.00
9.00	Ceiling and Carpentry Works		lot	1.00	0.00
10.00	Electrical Works		lot	1.00	0.00
13.00	Painting Works		lot	1.00	0.00
	Ramp on Fill (with Ramp Railing)		lot	1.00	0.00
BUILDING 8 : ONE UNIT - TWO CL MARCOS TYPE SCHOOL BUILDING (BUILDING 14) - 2 CL					
1.00	Earthworks		lot	1.00	0.00
2.00	Concreting Works		lot	1.00	0.00
3.00	Rebar Works		lot	1.00	0.00
4.00	Formworks		lot	1.00	0.00
5.00	Masonry Works		lot	1.00	0.00
6.00	Doors and Windows		lot	1.00	0.00
7.00	Steel Works		lot	1.00	0.00
8.00	Roofing Works		lot	1.00	0.00
9.00	Ceiling and Carpentry Works		lot	1.00	0.00
10.00	Electrical Works		lot	1.00	0.00
	Plumbing Works/ Sanitary Works		lot	1.00	0.00
13.00	Painting Works		lot	1.00	0.00
	Ramp on Fill (with Ramp Railing)		lot	1.00	0.00
BUILDING 9 : ONE UNIT - ONE CLASSROOM FVR (BUILDING 15) - 1 CL					
5.00	Masonry Works		lot	1.00	0.00
6.00	Doors and Windows		lot	1.00	0.00
7.00	Steel Works		lot	1.00	0.00
8.00	Roofing Works		lot	1.00	0.00
9.00	Ceiling and Carpentry Works		lot	1.00	0.00
10.00	Electrical Works		lot	1.00	0.00
13.00	Painting Works		lot	1.00	0.00
BUILDING 10 : ONE UNIT THREE (3) - SEATER TOILET (BUILDING 16)					
2.00	Concreting Works		lot	1.00	0.00
5.00	Masonry Works		lot	1.00	0.00
6.00	Doors and Windows		lot	1.00	0.00
10.00	Electrical Works		lot	1.00	0.00
	Plumbing Works/ Sanitary Works		lot	1.00	0.00
13.00	Painting Works		lot	1.00	0.00
14.00	Tile Works		lot	1.00	0.00
BUILDING 11 : ONE UNIT - THREE CLASSROOM BLSB TYPE BUILDING TEEP REPAIRED (BUILDING 19) - 3 CL					
1.00	Earthworks	#DIV/0!	lot	1.00	0.00

2.00	Concreting Works	#DIV/0!	lot	1.00	0.00
3.00	Rebar Works	#DIV/0!	lot	1.00	0.00
4.00	Formworks	#DIV/0!	lot	1.00	0.00
5.00	Masonry Works	#DIV/0!	lot	1.00	0.00
6.00	Doors and Windows	#DIV/0!	lot	1.00	0.00
7.00	Steel Works	#DIV/0!	lot	1.00	0.00
8.00	Roofing Works	#DIV/0!	lot	1.00	0.00
9.00	Ceiling and Carpentry Works	#DIV/0!	lot	1.00	0.00
10.00	Electrical Works	#DIV/0!	lot	1.00	0.00
13.00	Painting Works	#DIV/0!	lot	1.00	0.00
	Ramp on Fill (with Ramp Railing)	#DIV/0!	lot	1.00	0.00
	Sub-Total				0.00
	II. INDIRECT COST 17% of (I - Gen. Req'ts.)				
	Overhead Expenses (5%)				0.00
	Contingencies (3%)				0.00
	Miscellaneous (1%)				0.00
	Contractor's Profit (8%)				0.00
	Sub-Total				0.00
	III. TAX 5% of (I+II)				
	Sub-Total				0.00
	IV. TOTAL CONSTRUCTION COST (I + II + III)				0.00

Prepared by:

CONTRACTOR'S LOGO

PROGRAM OF WORKS DETAILED COST ESTIMATE

PROJECT : REPAIR AND REHABILITATION OF SCHOOL BUILDINGS - 17 CLASSROOMS
 SCHOOL : MALUAY ELEMENTARY SCHOOL
 LOCATION : ZAMBOANGUITA, NEGROS ORIENTAL
 OWNER : DEPARTMENT OF EDUCATION

ITEM NO.	DESCRIPTION	UNIT	QTY	UNIT COST		TOTAL COST		GRAND TOTAL
				MATERIAL	LABOR	MATERIAL	LABOR	
A	GENERAL REQUIREMENTS							
	Mobilization/Temporary Structures, Utilities and Services/Demobilization	lot	1.00					
	Safety and Health	lot	1.00					
	Project Billboard	lot	1.00					
	Fire Safety Inspection Certificate (FSIC)	lot	1.00					
	Permit Fee's and Other Necessary Requirements	lot	1.00					
	Hauling cost	lot	1.00					
	Sub-total							
BUILDING 1 : ONE UNIT - THREE CLASSROOM BLSB TYPE BUILDING TEEP REPAIRED (BUILDING 2) - 3 CL								
1.00	Earthworks							
	<i>Replacement of wooden partition wall with new CHB partition wall (Partition wall between Room 1 & 2)</i>							
1.02	Structural Excavation	cu.m	2.68					
1.03	Backfilling and Compaction	cu.m	1.65					
1.04	Gravel Bedding G-1	cu.m	0.37					
1.05	Soil Poisoning	sq.m	4.01					
	Sub-total							
2.00	Concreting Works							
	<i>Provision of new column on new CHB partition wall at center (0.20m x 0.30m concrete dimension)</i>							
	Column at center (0.20m x 0.30m)	cu.m	0.14					
2.01	Portland Cement	bag	2.00					
2.02	Crushed Gravel 3/4"	cu.m	0.25					
2.03	Washed Sand	cu.m	0.25					
	<i>Provision of new concrete column footing on new CHB partition wall (0.25m x 0.90m x 0.90m) at 1.20 m depth</i>							

	<i>Concrete column footing on new column for new CHB partition wall (0.25m x 0.90m x 0.90m)</i>	cu.m	0.20				
2.01	Portland Cement	bag	2.00				
2.02	Crushed Gravel 3/4"	cu.m	0.25				
2.03	Washed Sand	cu.m	0.25				
	<i>Provision of new concrete wall footing on new CHB partition wall (0.25 x 0.40m) at 0.60m depth</i>						
	<i>Concrete wall footing on new CHB partition wall (0.25 x 0.40m) at 0.60m depth</i>	cu.m	0.80				
2.01	Portland Cement	bag	8.00				
2.02	Crushed Gravel 3/4"	cu.m	1.00				
2.03	Washed Sand	cu.m	0.50				
	<i>Repair of cracked classroom floor slab and corridor slab</i>						
	<i>Repair of cracked classroom floor slab and corridor slab</i>	cu.m	1.10				
2.01	Portland Cement	bag	10.00				
2.02	Crushed Gravel 3/4"	cu.m	1.25				
2.03	Washed Sand	cu.m	0.75				
	<i>Sub-total</i>						
3.00	Rebar Works						
	<i>Reinforcing deformed bars for new columns, column footings and wall footings</i>						
3.01	New column on partition wall: Columns (0.20m x 0.30m) - using 4 - 16mm def bars with 10mm def bars ties with spacing of 1 @ 50mm; 8 @ 75mm and rest @ 150mm to center	kg	40.04				
3.01	Column footings (0.25m x 0.90m x 0.90m) - using 12mm def bars (4 pcs bothways)	kg	7.10				
3.01	Wall footing (0.25m x 0.40m) - using 10mm def bars (3 longitudinal bars with 10 mm def bar ties at 0.30m o.c.)	kg	19.71				
3.02	G.I. Tie Wire	kg	2.67				
	<i>Sub-total</i>						
4.00	Formworks						
	<i>Formworks for new column on partition wall</i>						
	<i>New column on partition wall</i>	sq.m	1.20				
4.01	Coco Lumber	bd.ft	21.00				
4.02	Plywood Ordinary, 1/4" x 4' x 8'	pc	1.00				
4.04	CWN, Assorted	kg	1.00				
	<i>Sub-total</i>						
5.00	Masonry Works						

	Replacement of wooden partition wall between Room 1 & 2 with CHB wall and covering of walls considering provision of 1 additional door per room							
	Masonry Wall	sq.m	24.92					
5.04	CHB 4" thk	pc	312.00					
5.02	Portland Cement	bag	9.00					
5.03	Washed Sand	cu.m	2.00					
5.06	10mm x 6m RSB	kg	34.00					
5.07	G.I. Tie Wire	kg	1.00					
	Plastering/ finishing of new masonry wall including repair of cracks on walls							
	Plastering/ finishing of walls including repair of cracks on walls	sq.m	61.84					
5.02	Portland Cement	bag	21.00					
5.03	Washed Sand	cu.m	3.00					
	Demolition of Masonry Wall for additional door							
5.01	Demolition of Masonry Wall	sq.m	2.16					
	Sub-total							
6.00	Doors & Windows							
	Provision of new doors (2 doors per room)							
6.03	D-1, Panel Door (0.90m x 2.10m on 150mm Wooden Jamb complete with Accessories (lever type door knob)	set	6.00					
	Replacement of toilet doors							
6.46	D-3 Flush Door 0.60m x 2.10m on 150mm Wooden Jamb complete with Accessories	set	2.00					
	Repair of damaged windows (replace damaged parts) and provision of jalousie windows - match existing including toilets							
	Repair of damaged windows (replace damaged parts) and provision of jalousie windows - match existing including toilets	s.m	8.32					
6.01	Removal of Door with Jamb	set	5.00					
	Sub-total							
7.00	Steel Works							
	<i>Trusses and Members</i>							
9.34	Removal of Wooden Truss/ Beams	bd.ft	882.00					
9.35	Removal of Purlins	bd.ft	672.00					
7.0900	L 50 x 50 x 6mm	kg	1,679.00					
7.0200	2" x 4" x 1.5mm C-purlins	kg	1,376.00					
7.1010	L 50 x 50 x 2mm	kg	33.00					
7.1810	Machine Bolts (10 mm dia.)	pc	364.00					

7.2200	12mmØ Sag Rods with Standard Nuts and washers	pc	144.00					
7.20	Plain Round Bar 16mmØ x 6m	pc	24.00					
7.31	Turn Buckle 16 mmØ	pc	24.00					
7.33	Anchor Bolt with Nuts and Washer, 16mmØ x 50mm x 300mm	pc	56.00					
7.25	Steel Plate 1.20m x 2.40m x 10mm	pc	4.00					
7.24	Steel Plate 1.20m x 2.40m x 12mm	pc	0.70					
7.46	Welding Rod	kg	68.00					
13.12	Primer, Zinc Chromate	gal	7.00					
	Re-fitting and re-installation of window grills and door grills							
	Re-fitting and re-installation of window grills and door grills	sq.ft	6.00					
	Sub-total							
8.00	Roofing Works							
	Replacement of all roofing sheets, ridge roll and flashing including toilet							
8.01	Removal of Roofing Sheets	sq.m	210.12					
8.02	Removal of Ridge Roll	pc	10.00					
8.03	Removal of Flashing	pc	10.00					
8.05	Removal of Fascia Board	pc	27.00					
8.16	G.I. Long-Span Roofing, Corrugated, Pre-Painted, 1220mm x 0.5mm BMT	m	231.00					
8.17	G.I. Ridge Roll, Preformed, Pre-Painted, 0.610m x 2.440m x 0.5mm BMT	pc	10.00					
8.19	G.I. Flashing, Preformed, Pre-Painted, 0.610m x 2.440m x 0.5mm BMT	pc	10.00					
7.1040	L 20 x 20 x 2mm	kg	108.00					
7.1020	L 38 x 38 x 4.5mm	kg	66.00					
	3" Flat head Countersunk screw	pc	415.00					
8.0900	J-Bolt (6mm dia.)	pc	1,512.00					
8.35	Teckscrew 2-1/2"	pc	1,764.00					
8.36	Roof Sealant	L	6.00					
8.37	Blind Rivets	pc	225.00					
	Sub-total							
9.00	Ceiling and Carpentry Works							
	Replacement of all ceiling boards and deteriorated ceiling joists including toilets							
	Interior Ceiling	sq.m	147.84					
	Replacement of all ceiling boards and deteriorated ceiling joists including toilet (re -using good condition removed purlins)							

9.01	Removal of Ceiling	sq.m	206.96				
9.06	Plywood, Marine 1/4" x 4' x 8'	pc.	51.00				
	50 mm x 50 mm Ceiling Joist	bd.ft.	78.00				
	50 mm x 75 mm Ceiling Joist	bd.ft.	115.00				
9.13	Rough Lumber, Sun Dried, Tanguile	bd.ft.	193.00				
9.22	Finishing Nails	kg	3.00				
9.23	Common Wire Nails	kg	4.00				
9.24	Concrete Nails	kg	3.00				
9.42	Wood Preservative, Brown	L	5.00				
	<i>Exterior Ceiling</i>	sq.m	59.12				
	Replacement of exterior ceiling and deteriorated ceiling joists including toilet (re-using good condition removed purlins)						
9.06	Plywood, Marine 1/4" x 4' x 8'	pc.	21.00				
	50 mm x 50 mm Ceiling Joist	bd.ft.	40.00				
	50 mm x 75 mm Ceiling Joist	bd.ft.	37.00				
9.13	Rough Lumber, Sun Dried, Tanguile	bd.ft.	77.00				
9.22	Finishing Nails	kg	2.00				
9.23	Common Wire Nails	kg	2.00				
9.24	Concrete Nails	kg	2.00				
9.42	Wood Preservative, Brown	L	2.00				
9.18	Fascia Board, Fiber Cement 12" x 8'	pc	27.00				
9.15	Ceiling Vent 1" x 12" x 4' with Screen	pc	8.00				
	Repair rehabilitation of wooden removable partition wall between Room 2 & 3						
	Repair/ rehabilitation of wooden removable partition wall between Room 2 & 3	sq.m.	20.79				
9.06	Plywood, Marine 1/4" x 4' x 8'	pc	15.00				
9.13	Rough Lumber, Sun Dried, Tanguile	bd.ft.	72.00				
9.22	Finishing Nails	kg	1.00				
9.23	Common Wire Nails	kg	2.00				
9.24	Concrete Nails	kg	1.00				
	<i>Blackboards</i>	sq.m.	17.28				
	Replacement of blackboards						
9.14	S4S Lumber, Kiln Dried, Tanguile	bd.ft.	76.00				
9.43	Lawanit, 1/4" thk	pc.	6.00				
9.22	Finishing Nails	kg	1.00				
9.23	Common Wire Nails	kg	2.00				
9.24	Concrete Nails	kg	1.00				
	Sub-total						
10.00	Electrical Works						
	Total replacement of existing electrical wirings and fixtures						

	Removal of existing electrical wires and fixtures	s.m	147.84				
	<i>Roughing-ins</i>						
10.01	Electrical Conduit uPVC, 15mmØ	pc	72.00				
10.06	RSC 20mmØ	pc	1.00				
10.34	Entrance Cap 20mm dia.	pc	1.00				
10.16	Junction Box, 4" x 4" G.I.	pc	18.00				
10.17	Utility Box, 2" x 4" G.I.	pc	12.00				
10.37	Grounding Rod, 2.4m x 16mm dia.	pc	1.00				
	<i>Wires & Fixtures</i>						
10.11	3.5 mm ² THHN Wire, Stranded	m	432.00				
10.12	5.5 mm ² THHN Wire, Stranded	m	10.00				
10.28	Duplex Convenience Outlet, Grounding Type, 20A, 250V	pc	6.00				
10.25	3 Single Pole Wall Switches in One Switch Plate (10 AMP, 230V)	pc	3.00				
10.23	Single Pole Wall Switch in One Switch Plate (10 AMP, 230V)	pc	2.00				
10.3610	FL 1 x 40W Industrial Type LED Lamp	set	21.00				
	LED Bulb 9 W with Medium Base Keyless Type Porcelain Receptacle	pc	2.00				
10.48	Panel Box, Flush Type, 4 Branches	set	1.00				
10.40	Circuit Breaker, 40A 2P	set	1.00				
10.38	Circuit Breaker, 20A 2P	set	3.00				
10.54	Vibrating Bell 8"	set	1.00				
	Push Button, 10A, 230V	set	1.00				
10.58	Electrical Tape	pc	3.00				
	Provision of Wall fan						
	Wall fan, 60W,230V, 60Hz	pcs	6.00				
	Sub-Total						
	Plumbing Works/ Sanitary Works						
	Repair/ Rehabilitation of toilet and septic tank						
11.62	Water Closet 1.6gpf with Accessories	set	2.00				
11.59	Faucet, Plain Bibb, Brass 1/2"Ø	pc	2.00				
	Sub-Total						
13.00	Painting Works						
	Wood Surfaces including interior and exterior ceiling, windows and doors and blackboards						
	<i>Wood Surfaces</i>	sq.m	251.96				
13.04	Enamel, Flatwall	gal	13.00				
13.05	Enamel, Semi Gloss	gal	13.00				
13.16	Paint Thinner	gal	7.00				
	All concrete surfaces						

	<i>Concrete Surfaces</i>	sq m	281.88					
13.01	Latex, Flat	gal	12.00					
13.02	Latex, Semi Gloss	gal	12.00					
13.18	Neutralizer	gal	2.00					
13.20	Acri Color	qrt	3.00					
	Window grills							
	Window grills/ door grills							
13.10	Primer, Red Oxide	gal	1.00					
13.06	Enamel, Quick Dry	gal	1.00					
13.16	Paint Thinner	gal	1.00					
	Removal of existing painting	s.m	238.68					
	Sub-Total							
	Ramp on Fill (with Ramp Railing)	cu.m	0.54					
2.01	Portland Cement	bag	5.00					
2.05	Crushed Gravel 1"	cu.m	0.75					
2.03	Washed Sand	cu.m	0.50					
5.06	10mm x 6m RSB	kg	23.28					
3.02	G.I. Tie Wire	kg	1.00					
7.2610	G.I. Pipe 1-1/2"Ø Sch.40	pc	6.00					
7.46	Welding Rod	kg	3.00					
	Sub-Total							
BUILDING 2: ONE UNIT - SCIENCE LABORATORY BUILDING UTILIZED AS DISTRICT OFFICE (BUILDING 3) - 1 CL								
5.00	Masonry Works							
	<i>Repair of cracks on walls of rear walls and plastering of unplastered portions of handwashing facility at the eastern side</i>							
	Repair of cracks on walls of rear walls and plastering of unplastered portions of handwashing facility at the eastern side	sq.m	3.44					
5.02	Portland Cement	bag	2.00					
5.03	Washed Sand	cu.m	1.00					
	Sub-total							
9.00	Ceiling and Carpentry Works							
	<i>Replacement of all ceiling boards and deteriorated ceiling joists</i>							
	<i>Exterior Ceiling</i>	sq.m	9.00					
	<i>Replacement of rear exterior ceiling and deteriorated ceiling joists</i>							
9.06	Plywood, Marine 1/4" x 4' x 8'	pc.	4.00					
	50 mm x 50 mm Ceiling Joist	bd.ft.	16.00					
	50 mm x 75 mm Ceiling Joist	bd.ft.	15.00					

9.13	Rough Lumber, Sun Dried, Tanguile	bd.ft.	31.00					
9.22	Finishing Nails	kg	1.00					
9.23	Common Wire Nails	kg	1.00					
9.24	Concrete Nails	kg	1.00					
9.42	Wood Preservative, Brown	L	1.00					
9.18	Fascia Board, Fiber Cement 12" x 8'	pc	16.00					
	Sub-total							
13.00	Painting Works							
	Wood Surfaces including interior and exterior ceiling, windows and doors and blackboards							
	Wood Surfaces	sq.m	114.24					
13.04	Enamel, Flatwall	gal	6.00					
13.05	Enamel, Semi Gloss	gal	6.00					
13.16	Paint Thinner	gal	3.00					
	All concrete surfaces							
	Concrete Surfaces	sq m	178.00					
13.01	Latex, Flat	gal	8.00					
13.02	Latex, Semi Gloss	gal	8.00					
13.18	Neutralizer	gal	2.00					
13.20	Acri Color	qrt	2.00					
	Roofing and Accessories	sq.m	110.00					
13.13	Gloss Acrylic Roof Paint	gal	5.00					
13.16	Paint Thinner	gal	2.00					
	Window grills							
	Window grills/ door grills							
13.10	Primer, Red Oxide	gal	1.00					
13.06	Enamel, Quick Dry	gal	1.00					
13.16	Paint Thinner	gal	1.00					
	Sub-Total							
	Ramp on Fill (with Ramp Railing)	cu.m	0.54					
2.01	Portland Cement	bag	5.00					
2.05	Crushed Gravel 1"	cu.m	0.75					
2.03	Washed Sand	cu.m	0.50					
5.06	10mm x 6m RSB	kg	23.28					
3.02	G.I. Tie Wire	kg	1.00					
7.2610	G.I. Pipe 1-1/2"Ø Sch.40	pc	6.00					
7.46	Welding Rod	kg	3.00					
	Sub-Total							
BUILDING 3 : ONE UNIT FIVE (5) - SEATER TOILET (BUILDING 5)								
2.00	Concreting Works							
	Re-pouring of affected							

	concrete slab							
	Re-pouring of affected concrete slab	cu.m	0.10					
2.01	Portland Cement	bag	1.00					
2.02	Crushed Gravel 3/4"	cu.m	0.25					
2.03	Washed Sand	cu.m	0.25					
	Demolition of affected concrete slab							
2.04	Demolition of reinforced concrete	cu.m	0.10					
	Sub-total							
5.00	Masonry Works							
	Plastering/ finishing of unplastered walls including repair of cracks on walls							
	Plastering/ finishing of unplastered walls including repair of cracks on walls	sq.m	18.00					
5.02	Portland Cement	bag	6.00					
5.03	Washed Sand	cu.m	1.00					
5.01	Demolition of Masonry Wall	sq.m	1.00					
	Sub-total							
6.00	Doors and Windows							
	Replacement of main doors							
6.03	D-1, Panel Door (0.90m x 2.10m on 150mm Wooden Jamb complete with Accessories (lever type door knob)	set	2.00					
	Replacement of toilet cubicle doors							
6.06	D-4 Cubicle Door 0.60m x 1.20m on 150mm Wooden Jamb complete with Accessories	set	5.00					
	Replacement of windows (match existing)							
6.40	W - 4, (0.6 x 0.6 m) Jalousie Window with Clear Glass Blades on JalouPlus Type Silver Colored Frame and Fixed Clear Glass Transom on 50 x 150 mm Wooden Jamb complete with Accessories	set	14.00					
6.01	Removal of Door with Jamb	set	7.00					
	Sub-total							
8.00	Roofing Works							
	Replacement of all roofing sheets and flashing							
8.01	Removal of Roofing Sheets	sq.m	38.88					
8.03	Removal of Flashing	pc	8.00					
8.05	Removal of Fascia Board	pc	11.00					
8.16	G.I. Long-Span Roofing, Corrugated, Pre-Painted, 1220mm x 0.5mm BMT	m	43.00					
8.19	G.I. Flashing, Preformed, Pre-Painted, 0.610m x 2.440m x 0.5mm BMT	pc	8.00					
7.1020	L 38 x 38 x 4.5mm	kg	22.00					

	3" Flat head Countersunk screw	pc	83.00				
8.0900	J-Bolt (6mm dia.)	pc	168.00				
8.35	Teckscrew 2-1/2"	pc	196.00				
8.36	Roof Sealant	L	2.00				
8.37	Blind Rivets	pc	25.00				
	Sub-total						
9.00	Ceiling and Carpentry Works						
	<i>Replacement of dilapidated and deteriorated rafter and purlins (re-using the removed good condition truss members and purlins of other buildings)</i>						
9.13	Rough Lumber, Sun Dried, Tanguile	bd.ft	58.67				
9.23	Common Wire Nails	kg	2.00				
9.34	Removal of dilapidated and deteriorated wooden truss members	bd.ft	26.67				
9.35	Removal of dilapidated and deteriorated purlins	bd.ft	32.00				
9.42	Wood Preservative, Brown	L	1.00				
	<i>Replacement of all ceiling boards and deteriorated ceiling joists</i>						
	<i>Interior Ceiling</i>	sq.m	22.94				
	<i>Replacement of all ceiling boards and deteriorated ceiling joists</i>						
9.01	Removal of Ceiling	sq.m	38.88				
9.06	Plywood, Marine 1/4" x 4' x 8'	pc.	8.00				
	50 mm x 50 mm Ceiling Joist	bd.ft.	40.00				
	50 mm x 75 mm Ceiling Joist	bd.ft.	60.00				
9.13	Rough Lumber, Sun Dried, Tanguile	bd.ft.	100.00				
9.22	Finishing Nails	kg	1.00				
9.23	Common Wire Nails	kg	2.00				
9.24	Concrete Nails	kg	1.00				
9.42	Wood Preservative, Brown	L	1.00				
	<i>Exterior Ceiling</i>	sq.m	15.94				
	<i>Replacement of exterior ceiling and deteriorated ceiling joists</i>						
9.06	Plywood, Marine 1/4" x 4' x 8'	pc.	6.00				
	50 mm x 50 mm Ceiling Joist	bd.ft.	28.00				
	50 mm x 75 mm Ceiling Joist	bd.ft.	41.00				
9.13	Rough Lumber, Sun Dried, Tanguile	bd.ft.	69.00				
9.22	Finishing Nails	kg	1.00				
9.23	Common Wire Nails	kg	2.00				
9.24	Concrete Nails	kg	1.00				
9.42	Wood Preservative, Brown	L	1.00				
9.18	Fascia Board, Fiber Cement 12" x 8'	pc	11.00				
9.15	Ceiling Vent 1" x 12" x 4' with	pc	4.00				

	Screen							
	Sub-total							
10.00	Electrical Works							
	Total replacement of existing electrical wirings and fixtures							
	Removal of existing electrical wires and fixtures	s.m	22.94					
	<i>Roughing-ins</i>							
10.01	Electrical Conduit uPVC, 15mmØ	pc	10.00					
10.06	RSC 20mmØ	pc	1.00					
10.34	Entrance Cap 20mm dia.	pc	1.00					
10.16	Junction Box, 4" x 4" G.I.	pc	4.00					
10.17	Utility Box, 2" x 4" G.I.	pc	2.00					
10.37	Grounding Rod, 2.4m x 16mm dia.	pc	1.00					
	<i>Wires & Fixtures</i>							
10.11	3.5 mm ² THHN Wire, Stranded	m	100.00					
10.12	5.5 mm ² THHN Wire, Stranded	m	10.00					
10.25	3 Single Pole Wall Switches in One Switch Plate (10 AMP, 230V)	pc	1.00					
10.23	Single Pole Wall Switch in One Switch Plate (10 AMP, 230V)	pc	1.00					
	LED Bulb 9 W with Medium Base Keyless Type Porcelain Receptacle	pc	3.00					
	Exhaust Fan 8" diameter	set	2.00					
10.46	Safety Switch 30A 2P	set	1.00					
10.58	Electrical Tape	pc	1.00					
	Sub-Total							
	Plumbing Works/ Sanitary Works							
	Repair/ Rehabilitation of toilet and septic tank							
11.62	Water Closet 1.6gpf with Accessories	set	5.00					
11.61	Water Closet Flange	set	5.00					
11.59	Faucet, Plain Bibb, Brass 1/2"Ø	pc	5.00					
11.65	S.S.Floor Drain 4' x 4"	pc	6.00					
11.06	PP-R Pipe 1/2"Ø	pc	10.00					
11.21	PP-R Elbow 90o x 1/2"Ø	pc	10.00					
11.15	PP-R Tee, 1/2"Ø	pc	10.00					
11.24	PP-R Coupling Reducer, 1/2" x 3/4"Ø	pc	1.00					
11.66	Teflon Tape	roll	4.00					
12.09	uPVC Sanitary Pipe 4"Ø	pc	6.00					
12.07	uPVC Sanitary Pipe 2"Ø	pc	6.00					
12.11	uPVC Elbow 90o x 2"Ø	pc	6.00					
12.13	uPVC Elbow 90o x 4"Ø	pc	6.00					
12.30	uPVC P-Trap 2"	pc	5.00					

12.28	Brass Cleanout 4" x 4"	pc	1.00				
12.33	PVC Cement	can	1.00				
	Rehabilitation of septic tank						
	Rehabilitation of septic tank	cu.m.	7.50				
	Sub-Total						
13.00	Painting Works						
	Wood Surfaces including interior and exterior ceiling, windows and doors and blackboards						
	Wood Surfaces	sq.m	53.64				
13.04	Enamel, Flatwall	gal	3.00				
13.05	Enamel, Semi Gloss	gal	3.00				
13.16	Paint Thinner	gal	2.00				
	All concrete surfaces						
	Concrete Surfaces	sq m	110.28				
13.01	Latex, Flat	gal	5.00				
13.02	Latex, Semi Gloss	gal	5.00				
13.20	Acri Color	qrt	2.00				
	Sub-Total						
	Ramp on Fill (with Ramp Railing)	cu.m	0.54				
2.01	Portland Cement	bag	5.00				
2.05	Crushed Gravel 1"	cu.m	0.75				
2.03	Washed Sand	cu.m	0.50				
5.06	10mm x 6m RSB	kg	23.28				
3.02	G.I. Tie Wire	kg	1.00				
7.2610	G.I. Pipe 1-1/2"Ø Sch.40	pc	6.00				
7.46	Welding Rod	kg	3.00				
	Sub-Total						
14.00	Tile Works						
	Replacement of floor and wall tiles						
	Wall	sq.m.	37.00				
14.04	Glazed Wall Tiles 20cm x 20cm	pc	953.00				
14.16	Tile Adhesive 25 kg/bag	bag	7.00				
14.15	Tile Grout 5 kg/bag	bag	3.00				
14.13	Tile Trim 6mm	pc	20.00				
	Floor	sq.m.	22.94				
14.01	Unglazed Floor Tiles 20cm x 20cm	pc	591.00				
14.16	Tile Adhesive 25 kg/bag	bag	5.00				
14.15	Tile Grout 5 kg/bag	bag	2.00				
	Removal of existing tiles						
	Removal of existing tiles	sq.m.	59.94				
	Sub-Total						
BUILDING 4: ONE UNIT - THREE CLASSROOMS BAGONG LIPUNAN TYPE I SCHOOL BUILDING (BUILDING 6) - 3 CL							

1.00	Earthworks							
	Replacement of removable wooden partition wall with new CHB partition wall							
1.02	Structural Excavation	cu.m	4.73					
1.03	Backfilling and Compaction	cu.m	3.63					
1.04	Gravel Bedding G-1	cu.m	0.31					
1.05	Soil Poisoning	sq.m	6.42					
	Sub-total							
2.00	Concreting Works							
	Provision of new column on new CHB partition wall at center (0.20m x 0.30m concrete dimension)							
	Column at center (0.20m x 0.30m)	cu.m	0.29					
2.01	Portland Cement	bag	3.00					
2.02	Crushed Gravel 3/4"	cu.m	0.50					
2.03	Washed Sand	cu.m	0.25					
	Provision of new concrete column footing on new CHB partition wall (0.25m x 0.90m x 0.90m) at 1.20 m depth							
	Concrete column footing on new column for new CHB partition wall (0.25m x 0.90m x 0.90m)	cu.m	0.41					
2.01	Portland Cement	bag	4.00					
2.02	Crushed Gravel 3/4"	cu.m	0.50					
2.03	Washed Sand	cu.m	0.25					
	Provision of new concrete wall footing on new CHB partition wall (0.25 x 0.40m) at 0.60m depth							
	Concrete wall footing on new CHB partition wall (0.25 x 0.40m) at 0.60m depth	cu.m	1.20					
2.01	Portland Cement	bag	11.00					
2.02	Crushed Gravel 3/4"	cu.m	1.25					
2.03	Washed Sand	cu.m	0.75					
	Repair of cracked classroom floor slab and corridor slab							
	Repair of cracked classroom floor slab and corridor slab	cu.m	1.00					
2.01	Portland Cement	bag	9.00					
2.02	Crushed Gravel 3/4"	cu.m	1.00					
	Sub-total							
3.00	Rebar Works							
	Reinforcing deformed bars for new columns, column footings and wall footings							
3.01	New column on partition wall: Columns (0.20m x 0.30m) - using 4 - 16mm def bars with 10mm def bars ties with spacing of 1 @ 50mm; 8 @ 75mm and rest @ 150mm to center	kg	80.08					

3.01	Column footings (0.25m x 0.90m x 0.90m) - using 12mm def bars (4 pcs bothways)	kg	14.21					
3.01	Wall footing (0.25m x 0.40m) - using 10mm def bars (3 longitudinal bars with 10 mm def bar ties at 0.30m o.c.)	kg	29.57					
3.02	G.I. Tie Wire	kg	4.95					
	Sub-total							
4.00	Formworks							
	Formworks for new column on partition wall							
	<i>New column on partition wall</i>	sq.m	1.20					
4.01	Coco Lumber	bd.ft	21.00					
4.02	Plywood Ordinary, 1/4" x 4' x 8'	pc	1.00					
4.04	CWN, Assorted	kg	1.00					
	Sub-total							
5.00	Masonry Works							
	Replacement of wooden partition wall with CHB wall, covering of walls considering provision of 1 additional door per room and covering of rear window							
	<i>Masonry Wall</i>	sq.m	40.88					
5.04	CHB 4" thk	pc	511.00					
5.02	Portland Cement	bag	14.00					
5.03	Washed Sand	cu.m	2.00					
5.06	10mm x 6m RSB	kg	55.00					
5.07	G.I. Tie Wire	kg	2.00					
	Plastering/ finishing of new masonry wall including repair of cracks on walls and unplastered walls at rear							
	<i>Plastering/ finishing of walls including repair of cracks on walls and plastering of unplastered walls at rear</i>	sq.m	93.76					
5.02	Portland Cement	bag	31.00					
5.03	Washed Sand	cu.m	4.00					
	Demolition of masonry wall for the addition of additional door per room							
5.01	Demolition of Masonry Wall	sq.m	2.16					
	Sub-total							
6.00	Doors & Windows							
	Provision of new doors (2 doors per room)							
6.03	D-1, Panel Door (0.90m x 2.10m on 150mm Wooden Jamb complete with Accessories (lever type door knob)	set	6.00					
	Replacement of toilet doors							
6.46	D-3 Flush Door 0.60m x 2.10m on 150mm Wooden Jamb complete with Accessories	set	3.00					

	Replacement of exit doors							
6.05	D-4 Cubicle Door 0.60m x 1.20m on 150mm Wooden Jamb complete with Accessories or match existing	set	3.00					
	Replacement of windows							
6.35	W - 1, (2.6 x 1.6 m) Jalousie Window with Clear Glass Blades on JalouPlus Type Silver Colored Frame and Fixed Clear Glass Transom on 50 x 100 mm Wooden Jamb complete with Accessories	set	3.00					
6.36	W - 2, (1.3 x 1.6 m) Jalousie Window with Clear Glass Blades on JalouPlus Type Silver Colored Frame and Fixed Clear Glass Transom on 50 x 100 mm Wooden Jamb complete with Accessories	set	9.00					
	Provision of toilet windows							
6.40	W - 4, (0.6 x 0.6 m) Jalousie Window with Clear Glass Blades on JalouPlus Type Silver Colored Frame and Fixed Clear Glass Transom on 50 x 150 mm Wooden Jamb complete with Accessories	set	3.00					
6.01	Removal of Door with Jamb	set	9.00					
	Sub-total							
7.00	Steel Works							
	<i>Trusses and Members</i>							
9.34	Removal of Wooden Truss/ Beams	bd.ft	1,188.00					
9.35	Removal of Purlins	bd.ft	756.00					
7.0900	L 50 x 50 x 6mm	kg	2,263.00					
7.0200	2" x 4" x 1.5mm C-purlins	kg	1,550.00					
7.1010	L 50 x 50 x 2mm	kg	42.00					
7.1810	Machine Bolts (10 mm dia.)	pc	498.00					
7.2200	12mmØ Sag Rods with Standard Nuts and washers	pc	198.00					
7.20	Plain Round Bar 16mmØ x 6m	pc	27.00					
7.31	Turn Buckle 16 mmØ	pc	36.00					
7.33	Anchor Bolt with Nuts and Washer, 16mmØ x 50mm x 300mm	pc	80.00					
7.25	Steel Plate 1.20m x 2.40m x 10mm	pc	4.00					
7.24	Steel Plate 1.20m x 2.40m x 12mm	pc	0.71					
7.46	Welding Rod	kg	85.00					
13.12	Primer, Zinc Chromate	gal	10.00					
	Re-fitting and re-installation of window grills							
	Re-fitting and re-installation of window grills at front windows	sq.ft	18.00					
	Sub-total							

8.00	Roofing Works							
	Replacement of all roofing sheets, ridge roll and flashing including toilet							
8.01	Removal of Roofing Sheets	sq.m	230.14					
8.02	Removal of Ridge Roll	pc	12.00					
8.03	Removal of Flashing	pc	9.00					
8.05	Removal of Fascia Board	pc	38.00					
8.16	G.I. Long-Span Roofing, Corrugated, Pre-Painted, 1220mm x 0.5mm BMT	m	253.00					
8.17	G.I. Ridge Roll, Preformed, Pre-Painted, 0.610m x 2.440m x 0.5mm BMT	pc	12.00					
8.19	G.I. Flashing, Preformed, Pre-Painted, 0.610m x 2.440m x 0.5mm BMT	pc	9.00					
7.1040	L 20 x 20 x 2mm	kg	126.00					
7.1020	L 38 x 38 x 4.5mm	kg	61.00					
	3" Flat head Countersunk screw	pc	498.00					
8.0900	J-Bolt (6mm dia.)	pc	1,908.00					
8.35	Teckscrew 2-1/2"	pc	1,908.00					
8.36	Roof Sealant	L	6.00					
8.37	Blind Rivets	pc	225.00					
	Sub-total							
9.00	Ceiling and Carpentry Works							
	Replacement of all ceiling boards and deteriorated ceiling joists including toilets							
	<i>Interior Ceiling</i>	sq.m	163.24					
	Replacement of all ceiling boards and deteriorated ceiling joists including toilet (re -using good condition removed purlins)							
9.01	Removal of Ceiling	sq.m	232.21					
9.06	Plywood, Marine 1/4" x 4' x 8'	pc.	56.00					
	50 mm x 50 mm Ceiling Joist	bd.ft.	200.00					
	50 mm x 75 mm Ceiling Joist	bd.ft.	299.00					
9.13	Rough Lumber, Sun Dried, Tanguile	bd.ft.	499.00					
9.22	Finishing Nails	kg	4.00					
9.23	Common Wire Nails	kg	9.00					
9.24	Concrete Nails	kg	4.00					
9.42	Wood Preservative, Brown	L	6.00					
	<i>Exterior Ceiling</i>	sq.m	68.97					
	Replacement of exterior ceiling and deteriorated ceiling joists including toilet (re -using good condition removed purlins)							
9.06	Plywood, Marine 1/4" x 4' x 8'	pc.	24.00					
	50 mm x 50 mm Ceiling Joist	bd.ft.	112.00					

	50 mm x 75 mm Ceiling Joist	bd.ft.	98.00				
9.13	Rough Lumber, Sun Dried, Tanguile	bd.ft.	210.00				
9.22	Finishing Nails	kg	2.00				
9.23	Common Wire Nails	kg	4.00				
9.24	Concrete Nails	kg	2.00				
9.42	Wood Preservative, Brown	L	3.00				
9.18	Fascia Board, Fiber Cement 12" x 8'	pc	38.00				
9.15	Ceiling Vent 1" x 12" x 4' with Screen	pc	8.00				
	<i>Blackboards</i>	sq.m.	17.28				
	Replacement of blackboards						
9.14	S4S Lumber, Kiln Dried, Tanguile	bd.ft.	76.00				
9.43	Lawanit, 1/4" thk	pc.	6.00				
9.22	Finishing Nails	kg	1.00				
9.23	Common Wire Nails	kg	2.00				
9.24	Concrete Nails	kg	1.00				
	Sub-total						
10.00	Electrical Works						
	Total replacement of existing electrical wirings and fixtures						
	Removal of existing electrical wires and fixtures	s.m	163.24				
	<i>Roughing-ins</i>						
10.01	Electrical Conduit uPVC, 15mmØ	pc	72.00				
10.06	RSC 20mmØ	pc	1.00				
10.34	Entrance Cap 20mm dia.	pc	1.00				
10.16	Junction Box, 4" x 4" G.I.	pc	18.00				
10.17	Utility Box, 2" x 4" G.I.	pc	12.00				
10.37	Grounding Rod, 2.4m x 16mm dia.	pc	1.00				
	<i>Wires & Fixtures</i>						
10.11	3.5 mm ² THHN Wire, Stranded	m	432.00				
10.12	5.5 mm ² THHN Wire, Stranded	m	10.00				
10.28	Duplex Convenience Outlet, Grounding Type, 20A, 250V	pc	6.00				
10.25	3 Single Pole Wall Switches in One Switch Plate (10 AMP, 230V)	pc	3.00				
10.23	Single Pole Wall Switch in One Switch Plate (10 AMP, 230V)	pc	3.00				
10.3610	FL 1 x 40W Industrial Type LED Lamp	set	21.00				
	LED Bulb 9 W with Medium Base Keyless Type Porcelain Receptacle	pc	3.00				
10.48	Panel Box, Flush Type, 4 Branches	set	1.00				
10.40	Circuit Breaker, 40A 2P	set	1.00				
10.38	Circuit Breaker, 20A 2P	set	3.00				
10.54	Vibrating Bell 8"	set	1.00				

	Push Button, 10A, 230V	set	1.00				
10.58	Electrical Tape	pc	3.00				
	Provision of Wall fan						
	Wall fan, 60W,230V, 60Hz	pcs	6.00				
	Sub-Total						
	Plumbing Works/ Sanitary Works						
	Repair/ Rehabilitation of toilet and septic tank						
11.62	Water Closet 1.6gpf with Accessories	set	3.00				
11.59	Faucet, Plain Bibb, Brass 1/2"Ø	pc	3.00				
	Sub-Total						
13.00	Painting Works						
	Wood Surfaces including interior and exterior ceiling, windows and doors and blackboards						
	Wood Surfaces	sq.m	279.73				
13.04	Enamel, Flatwall	gal	14.00				
13.05	Enamel, Semi Gloss	gal	14.00				
13.16	Paint Thinner	gal	7.00				
	All concrete surfaces						
	Concrete Surfaces	sq m	362.88				
13.01	Latex, Flat	gal	15.00				
13.02	Latex, Semi Gloss	gal	15.00				
13.18	Neutralizer	gal	2.00				
13.20	Acri Color	qrt	4.00				
	Window grills						
	Window grills/ door grills						
13.10	Primer, Red Oxide	gal	1.00				
13.06	Enamel, Quick Dry	gal	1.00				
13.16	Paint Thinner	gal	1.00				
	Removal of existing painting	s.m.	293.76				
	Sub-Total						
	Ramp on Fill (with Ramp Railing)						
		cu.m	0.54				
2.01	Portland Cement	bag	5.00				
2.05	Crushed Gravel 1"	cu.m	0.75				
2.03	Washed Sand	cu.m	0.50				
5.06	10mm x 6m RSB	kg	23.28				
3.02	G.I. Tie Wire	kg	1.00				
7.2610	G.I. Pipe 1-1/2"Ø Sch.40	pc	6.00				
7.46	Welding Rod	kg	3.00				
	Sub-Total						

BUILDING 5: ONE UNIT - TWO CLASSROOMS ARMY TYPE BUILDING (BUILDING 7) - 2 CL

1.00	Earthworks							
	Replacement of wooden wall with CHB walls and construction of concrete columns and beams							
1.02	Structural Excavation	cu.m	24.19					
1.03	Backfilling and Compaction	cu.m	15.88					
1.04	Gravel Bedding G-1	cu.m	3.03					
1.05	Soil Poisoning	sq.m	270.30					
	Sub-total							
2.00	Concreting Works							
	Provision of new concrete columns (0.20m x 0.30m concrete dimension)							
	Columns (0.20m x 0.30m)	cu.m	2.59					
2.01	Portland Cement	bag	24.00					
2.02	Crushed Gravel 3/4"	cu.m	2.75					
2.03	Washed Sand	cu.m	1.50					
	Provision of new concrete column footing (0.25m x 0.90m x 0.90m) at 1.20 m depth							
	Provision of new concrete column footing (0.25m x 0.90m x 0.90m) at 1.20 m depth	cu.m	3.65					
2.01	Portland Cement	bag	33.00					
2.02	Crushed Gravel 3/4"	cu.m	3.75					
2.03	Washed Sand	cu.m	2.00					
	Provision of new concrete wall footing on new CHB walls (0.25 x 0.40m) at 0.60m depth							
	Concrete wall footing on new CHB walls (0.25 x 0.40m) at 0.60m depth	cu.m	3.93					
2.01	Portland Cement	bag	36.00					
2.02	Crushed Gravel 3/4"	cu.m	4.00					
2.03	Washed Sand	cu.m	2.00					
	Concrete beams (all around including at corridor columns) at 0.20m x 0.30m							
	Concrete Beams - 0.20m x 0.30m	cu.m	3.08					
2.01	Portland Cement	bag	28.00					
2.02	Crushed Gravel 3/4"	cu.m	3.25					
2.03	Washed Sand	cu.m	1.75					
	End wall inclined beams (at end walls) at 0.20m x 0.30m							
	End wall inclined beams - 0.20m x 0.30m	cu.m	0.86					
2.01	Portland Cement	bag	8.00					
2.02	Crushed Gravel 3/4"	cu.m	1.00					
2.03	Washed Sand	cu.m	0.50					
	Continuation of corridor to 3 CL BLSB Type Bldg and 1 CL FVR Bldg							

	Continuation of corridor to 3 CL BLSB Type Bldg and 1 CL FVR Bldg	cu.m	0.75				
2.01	Portland Cement	bag	7.00				
2.02	Crushed Gravel 3/4"	cu.m	0.75				
2.03	Washed Sand	cu.m	0.50				
	Concrete overlay on classroom floor slab						
	Concrete overlay on classroom floor slab (3 inch thick)	cu.m	6.30				
2.01	Portland Cement	bag	57.00				
2.02	Crushed Gravel 3/4"	cu.m	6.50				
2.04	Demolition of reinforced concrete	cu.m	4.32				
	Concrete overlay on corridor slab						
	Concrete overlay on corridor slab (3 inch thick)	cu.m	1.53				
2.01	Portland Cement	bag	14.00				
2.02	Crushed Gravel 3/4"	cu.m	1.75				
2.04	Demolition of reinforced concrete	cu.m	4.32				
	Sub-total						
3.00	Rebar Works						
	Reinforcing deformed bars for columns, column footings, wall footings, roof beams and floor slab						
3.01	New columns : Columns (0.20m x 0.30m) - using 4 - 16mm def bars with 10mm def bars ties with spacing of 1 @ 50mm; 8 @ 75mm and rest @ 150mm to center	kg	720.72				
3.01	Column footings (0.25m x 0.90m x 0.90m) - using 12mm def bars (4 pcs bothways)	kg	127.87				
3.01	Wall footing (0.25m x 0.40m) - using 10mm def bars (3 longitudinal bars with 10 mm def bar ties at 0.30m o.c.)	kg	114.95				
3.01	Roof beam using 16mm def bars with 10mm stirrups with spacing 1 @ 50mm; 8 @ 75mm and rest @ 150mm to center	kg	615.84				
3.01	End wall inclined beams 16mm def bars with 10mm stirrups with spacing 1 @ 50mm; 8 @ 75mm and rest @ 150mm to center	kg	168.42				
3.01	Corridor and classroom floor slab reinforcing bars (10 mm def bars) spaced at 0.60m o.c. Bothways	kg	216.96				
3.02	G.I. Tie Wire	kg	71.85				
	Sub-total						
4.00	Formworks						

	Formworks for new columns, roof beams and end wall inclined beams						
	<i>New columns and roof beam</i>	sq.m	16.32				
4.01	Coco Lumber	bd.ft	278.00				
4.02	Plywood Ordinary, 1/4" x 4' x 8'	pc	3.00				
4.04	CWN, Assorted	kg	4.00				
	Sub-total						
5.00	Masonry Works						
	Replacement of wooden partition walls with CHB walls						
	<i>Masonry Wall</i>	sq.m	93.48				
5.05	CHB 6" thk	pc	1,169.00				
5.02	Portland Cement	bag	31.00				
5.03	Washed Sand	cu.m	4.00				
5.06	10mm x 6m RSB	kg	124.00				
5.07	G.I. Tie Wire	kg	3.00				
	Plastering/ finishing of new masonry wall						
	Plastering/ finishing of new masonry wall	sq.m	186.96				
5.02	Portland Cement	bag	62.00				
5.03	Washed Sand	cu.m	7.00				
	Demolition of masonry wall						
5.01	Demolition of Masonry Wall	sq.m	22.50				
	Sub-total						
6.00	Doors & Windows						
	Provision of new doors (2 doors per room)						
6.03	D-1, Panel Door (0.90m x 2.10m on 150mm Wooden Jamb complete with Accessories (lever type door knob)	set	4.00				
	Provision of new windows						
6.35	W - 1, (2.6 x 1.6 m) Jalousie Window with Clear Glass Blades on JalouPlus Type Silver Colored Frame and Fixed Clear Glass Transom on 50 x 100 mm Wooden Jamb complete with Accessories	set	4.00				
6.36	W - 2, (1.3 x 1.6 m) Jalousie Window with Clear Glass Blades on JalouPlus Type Silver Colored Frame and Fixed Clear Glass Transom on 50 x 100 mm Wooden Jamb complete with Accessories	set	4.00				
	Sub-total						
7.00	Steel Works						
	<i>Trusses and Members</i>						
9.34	Removal of Wooden Truss/ Beams	bd.ft	630.00				
9.35	Removal of Purlins	bd.ft	448.00				

7.0900	L 50 x 50 x 6mm	kg	1,199.00				
7.0200	2" x 4" x 1.5mm C-purlins	kg	917.00				
7.1010	L 50 x 50 x 2mm	kg	22.00				
7.1810	Machine Bolts (10 mm dia.)	pc	260.00				
7.2200	12mmØ Sag Rods with Standard Nuts and washers	pc	96.00				
7.20	Plain Round Bar 16mmØ x 6m	pc	16.00				
7.31	Turn Buckle 16 mmØ	pc	16.00				
7.33	Anchor Bolt with Nuts and Washer, 16mmØ x 50mm x 300mm	pc	40.00				
7.25	Steel Plate 1.20m x 2.40m x 10mm	pc	3.00				
7.24	Steel Plate 1.20m x 2.40m x 12mm	pc	0.50				
7.46	Welding Rod	kg	48.00				
13.12	Primer, Zinc Chromate	gal	5.00				
	Sub-total						
8.00	Roofing Works						
	<i>Replacement of all roofing sheets, ridge roll and flashing</i>						
8.01	Removal of Roofing Sheets	sq.m	132.18				
8.02	Removal of Ridge Roll	pc	6.00				
8.03	Removal of Flashing	pc	10.00				
8.05	Removal of Fascia Board	pc	20.00				
8.16	G.I. Long-Span Roofing, Corrugated, Pre-Painted, 1220mm x 0.5mm BMT	m	146.00				
8.17	G.I. Ridge Roll, Preformed, Pre-Painted, 0.610m x 2.440m x 0.5mm BMT	pc	6.00				
8.19	G.I. Flashing, Preformed, Pre-Painted, 0.610m x 2.440m x 0.5mm BMT	pc	10.00				
7.1040	L 20 x 20 x 2mm	kg	86.00				
7.1020	L 38 x 38 x 4.5mm	kg	66.00				
	3" Flat head Countersunk screw	pc	332.00				
8.0900	J-Bolt (6mm dia.)	pc	1,008.00				
8.35	Teckscrew 2-1/2"	pc	1,176.00				
8.36	Roof Sealant	L	4.00				
8.37	Blind Rivets	pc	150.00				
	Sub-total						
9.00	Ceiling and Carpentry Works						
	<i>Provision of ceiling boards and ceiling joists</i>						
	<i>Interior Ceiling</i>	sq.m	84.00				
	<i>Provision of ceiling boards and ceiling joists (re -using good condition removed purlins)</i>						
9.06	Plywood, Marine 1/4" x 4' x 8'	pc.	29.00				

	50 mm x 50 mm Ceiling Joist	bd.ft.	147.00				
	50 mm x 75 mm Ceiling Joist	bd.ft.	220.00				
9.13	Rough Lumber, Sun Dried, Tanguile	bd.ft.	367.00				
9.22	Finishing Nails	kg	2.00				
9.23	Common Wire Nails	kg	7.00				
9.24	Concrete Nails	kg	2.00				
9.42	Wood Preservative, Brown	L	3.00				
	<i>Exterior Ceiling</i>	sq.m	45.06				
	Provision of ceiling boards and ceiling joists (re -using good condition removed purlins)						
9.06	Plywood, Marine 1/4" x 4' x 8'	pc.	16.00				
	50 mm x 50 mm Ceiling Joist	bd.ft.	100.00				
	50 mm x 75 mm Ceiling Joist	bd.ft.	96.00				
9.13	Rough Lumber, Sun Dried, Tanguile	bd.ft.	196.00				
9.22	Finishing Nails	kg	1.00				
9.23	Common Wire Nails	kg	4.00				
9.24	Concrete Nails	kg	1.00				
9.42	Wood Preservative, Brown	L	2.00				
9.18	Fascia Board, Fiber Cement 12" x 8'	pc	20.00				
9.15	Ceiling Vent 1" x 12" x 4' with Screen	pc	6.00				
	<i>Blackboards</i>	sq.m.	11.52				
	Provision of blackboards						
9.14	S4S Lumber, Kiln Dried, Tanguile	bd.ft.	51.00				
9.43	Lawanit, 1/4" thk	pc.	4.00				
9.22	Finishing Nails	kg	1.00				
9.23	Common Wire Nails	kg	1.00				
9.24	Concrete Nails	kg	1.00				
	Sub-total						
10.00	Electrical Works						
	Provision of electrical wirings and fixtures						
	<i>Roughing-ins</i>						
10.01	Electrical Conduit uPVC, 15mmØ	pc	48.00				
10.06	RSC 20mmØ	pc	1.00				
10.34	Entrance Cap 20mm dia.	pc	1.00				
10.16	Junction Box, 4" x 4" G.I.	pc	12.00				
10.17	Utility Box, 2" x 4" G.I.	pc	8.00				
10.37	Grounding Rod, 2.4m x 16mm dia.	pc	1.00				
	<i>Wires & Fixtures</i>						
10.11	3.5 mm ² THHN Wire, Stranded	m	288.00				
10.12	5.5 mm ² THHN Wire, Stranded	m	10.00				
10.28	Duplex Convenience Outlet, Grounding Type, 20A, 250V	pc	4.00				

10.25	3 Single Pole Wall Switches in One Switch Plate (10 AMP, 230V)	pc	2.00					
10.3610	FL 1 x 40W Industrial Type LED Lamp	set	14.00					
10.48	Panel Box, Flush Type, 4 Branches	set	1.00					
10.40	Circuit Breaker, 40A 2P	set	1.00					
10.38	Circuit Breaker, 20A 2P	set	3.00					
10.54	Vibrating Bell 8"	set	1.00					
	Push Button, 10A, 230V	set	1.00					
10.58	Electrical Tape	pc	3.00					
	Provision of Wall fan							
	Wall fan, 60W,230V, 60Hz	pcs	4.00					
	Sub-Total							
13.00	Painting Works							
	Wood Surfaces including interior and exterior ceiling, windows and doors and blackboards							
	<i>Wood Surfaces</i>	sq.m	155.70					
13.04	Enamel, Flatwall	gal	8.00					
13.05	Enamel, Semi Gloss	gal	8.00					
13.16	Paint Thinner	gal	4.00					
	All concrete surfaces							
	<i>Concrete Surfaces</i>	sq m	185.70					
13.01	Latex, Flat	gal	8.00					
13.02	Latex, Semi Gloss	gal	8.00					
13.18	Neutralizer	gal	4.00					
13.20	Acri Color	qrt	2.00					
	Sub-Total							
	Ramp on Fill (with Ramp Railing)	cu.m	0.54					
2.01	Portland Cement	bag	5.00					
2.05	Crushed Gravel 1"	cu.m	0.75					
2.03	Washed Sand	cu.m	0.50					
5.06	10mm x 6m RSB	kg	23.28					
3.02	G.I. Tie Wire	kg	1.00					
7.2610	G.I. Pipe 1-1/2"Ø Sch.40	pc	6.00					
7.46	Welding Rod	kg	3.00					
	Sub-Total							
BUILDING 6 : ONE UNIT - ONE CLASSROOM FVR BUILDING (BUILDING 8) - 1 CL								
5.00	Masonry Works							
	Covering of walls considering provision of 1 additional door and covering of window near toilet.							
	<i>Masonry Wall</i>	sq.m	0.84					

5.04	CHB 4" thk	pc	11.00					
5.02	Portland Cement	bag	1.00					
5.03	Washed Sand	cu.m	1.00					
5.06	10mm x 6m RSB	kg	2.00					
5.07	G.I. Tie Wire	kg	1.00					
	Plastering/ finishing of new masonry wall including repair of cracks on walls							
	<i>Plastering/ finishing of walls including repair of cracks on walls</i>	sq.m	3.68					
5.02	Portland Cement	bag	2.00					
5.03	Washed Sand	cu.m	1.00					
	Sub-total							
6.00	Doors and Windows							
	Provision of new doors (2 doors per room)							
6.03	D-1, Panel Door (0.90m x 2.10m on 150mm Wooden Jamb complete with Accessories (lever type door knob)	set	2.00					
	Replacement of toilet door							
6.46	D-3 Flush Door 0.60m x 2.10m on 150mm Wooden Jamb complete with Accessories	set	1.00					
	Provision of glass jalousie windows on concrete jambs considering provision of 1 additional door per room including re-installation, repair and strengthening of window grills							
	Jalousie Window with Clear Glass Blades on JalouPlus Type Silver Colored Frame (match existing window size) per bay including re-installation, repair and strengthening of window grills	set	11.00					
6.01	Removal of Door with Jamb	set	2.00					
	Sub-total							
7.00	Steel Works							
	<i>Trusses and Members</i>							
9.34	Removal of Wooden Truss/ Beams	bd.ft	672.00					
9.35	Removal of Purlins	bd.ft	331.00					
7.0900	L 50 x 50 x 6mm	kg	798.00					
7.0200	2" x 4" x 1.5mm C-purlins	kg	568.00					
7.1010	L 50 x 50 x 2mm	kg	11.00					
7.1810	Machine Bolts (10 mm dia.)	pc	156.00					
7.2200	12mmØ Sag Rods with Standard Nuts and washers	pc	96.00					
7.20	Plain Round Bar 16mmØ x 6m	pc	9.00					
7.31	Turn Buckle 16 mmØ	pc	8.00					
7.33	Anchor Bolt with Nuts and Washer, 16mmØ x 50mm x 300mm	pc	24.00					

7.25	Steel Plate 1.20m x 2.40m x 10mm	pc	2.00				
7.24	Steel Plate 1.20m x 2.40m x 12mm	pc	0.30				
7.46	Welding Rod	kg	33.00				
13.12	Primer, Zinc Chromate	gal	3.00				
	Re-fitting and re-installation of window grills						
	Re-fitting and re-installation of window grills at front windows	sq.ft	4.00				
	Sub-total						
8.00	Roofing Works						
	Replacement of all roofing sheets, ridge roll and flashing including toilet						
8.01	Removal of Roofing Sheets	sq.m	95.83				
8.02	Removal of Ridge Roll	pc	4.00				
8.03	Removal of Flashing	pc	10.00				
8.05	Removal of Fascia Board	pc	17.00				
8.16	G.I. Long-Span Roofing, Corrugated, Pre-Painted, 1220mm x 0.5mm BMT	m	106.00				
8.17	G.I. Ridge Roll, Preformed, Pre-Painted, 0.610m x 2.440m x 0.5mm BMT	pc	4.00				
8.19	G.I. Flashing, Preformed, Pre-Painted, 0.610m x 2.440m x 0.5mm BMT	pc	10.00				
7.1040	L 20 x 20 x 2mm	kg	70.00				
7.1020	L 38 x 38 x 4.5mm	kg	66.00				
	3" Flat head Countersunk screw	pc	265.00				
8.0900	J-Bolt (6mm dia.)	pc	662.00				
8.35	Teckscrew 2-1/2"	pc	772.00				
8.36	Roof Sealant	L	2.00				
8.37	Blind Rivets	pc	84.00				
	Sub-total						
9.00	Ceiling and Carpentry Works						
	Replacement of all ceiling boards and deteriorated ceiling joists						
	<i>Interior Ceiling</i>	sq.m	56.00				
	Replacement of all ceiling boards and deteriorated ceiling joists (re -using good condition removed purlins)						
9.01	Removal of Ceiling	sq.m	88.71				
9.06	Plywood, Marine 1/4" x 4' x 8'	pc.	20.00				
	50 mm x 50 mm Ceiling Joist	bd.ft.	59.00				
	50 mm x 75 mm Ceiling Joist	bd.ft.	87.00				
9.13	Rough Lumber, Sun Dried, Tanguile	bd.ft.	146.00				
9.22	Finishing Nails	kg	2.00				
9.23	Common Wire Nails	kg	3.00				
9.24	Concrete Nails	kg	2.00				

9.42	Wood Preservative, Brown	L	2.00				
	<i>Exterior Ceiling</i>	sq.m	32.71				
	Replacement of exterior ceiling and deteriorated ceiling joists (re -using good condition removed purlins)						
9.06	Plywood, Marine 1/4" x 4' x 8'	pc.	12.00				
	50 mm x 50 mm Ceiling Joist	bd.ft.	59.00				
	50 mm x 75 mm Ceiling Joist	bd.ft.	55.00				
9.13	Rough Lumber, Sun Dried, Tanguile	bd.ft.	114.00				
9.22	Finishing Nails	kg	1.00				
9.23	Common Wire Nails	kg	3.00				
9.24	Concrete Nails	kg	1.00				
9.42	Wood Preservative, Brown	L	2.00				
9.18	Fascia Board, Fiber Cement 12" x 8'	pc	17.00				
9.15	Ceiling Vent 1" x 12" x 4' with Screen	pc	4.00				
	<i>Blackboards</i>	sq.m.	5.76				
	Replacement of blackboards						
9.14	S4S Lumber, Kiln Dried, Tanguile	bd.ft.	26.00				
9.43	Lawanit, 1/4" thk	pc.	2.00				
9.22	Finishing Nails	kg	1.00				
9.23	Common Wire Nails	kg	1.00				
9.24	Concrete Nails	kg	1.00				
	Sub-total						
10.00	Electrical Works						
	Total replacement of existing electrical wirings and fixtures						
	Removal of existing electrical wires and fixtures	s.m	56.00				
	<i>Roughing-ins</i>						
10.01	Electrical Conduit uPVC, 15mmØ	pc	20.00				
10.06	RSC 20mmØ	pc	1.00				
10.34	Entrance Cap 20mm dia.	pc	1.00				
10.16	Junction Box, 4" x 4" G.I.	pc	6.00				
10.17	Utility Box, 2" x 4" G.I.	pc	4.00				
10.37	Grounding Rod, 2.4m x 16mm dia.	pc	1.00				
	<i>Wires & Fixtures</i>						
10.11	3.5 mm ² THHN Wire, Stranded	m	180.00				
10.12	5.5 mm ² THHN Wire, Stranded	m	10.00				
10.28	Duplex Convenience Outlet, Grounding Type, 20A, 250V	pc	2.00				
10.25	3 Single Pole Wall Switches in One Switch Plate (10 AMP, 230V)	pc	1.00				
10.23	Single Pole Wall Switch in One Switch Plate (10 AMP, 230V)	pc	1.00				
10.3610	FL 1 x 40W Industrial Type	set	7.00				

	LED Lamp						
	LED Bulb 9 W with Medium Base Keyless Type Porcelain Receptacle	pc	1.00				
10.48	Panel Box, Flush Type, 4 Branches	set	1.00				
10.40	Circuit Breaker, 40A 2P	set	1.00				
10.38	Circuit Breaker, 20A 2P	set	3.00				
10.54	Vibrating Bell 8"	set	1.00				
	Push Button, 10A, 230V	set	1.00				
10.58	Electrical Tape	pc	2.00				
	Provision of Wall fan						
	Wall fan, 60W,230V, 60Hz	pcs	2.00				
	Sub-Total						
	Plumbing Works/ Sanitary Works						
	Repair/ Rehabilitation of toilet and septic tank						
11.62	Water Closet 1.6gpf with Accessories	set	1.00				
11.59	Faucet, Plain Bibb, Brass 1/2"Ø	pc	1.00				
	Sub-Total						
13.00	Painting Works						
	Wood Surfaces including interior and exterior ceiling, windows and doors and blackboards						
	Wood Surfaces	sq.m	104.55				
13.04	Enamel, Flatwall	gal	6.00				
13.05	Enamel, Semi Gloss	gal	6.00				
13.16	Paint Thinner	gal	3.00				
	All concrete surfaces						
	Concrete Surfaces	sq m	124.36				
13.01	Latex, Flat	gal	5.00				
13.02	Latex, Semi Gloss	gal	5.00				
13.18	Neutralizer	gal	1.00				
13.20	Acri Color	qrt	2.00				
	Window grills						
	Window grills/ door grills						
13.10	Primer, Red Oxide	gal	1.00				
13.06	Enamel, Quick Dry	gal	1.00				
13.16	Paint Thinner	gal	1.00				
	Removal of existing painting	s.m	124.36				
	Sub-Total						
	Ramp on Fill (with Ramp Railing)	cu.m	0.54				
2.01	Portland Cement	bag	5.00				
2.05	Crushed Gravel 1"	cu.m	0.75				
2.03	Washed Sand	cu.m	0.50				

5.06	10mm x 6m RSB	kg	23.28					
3.02	G.I. Tie Wire	kg	1.00					
7.2610	G.I. Pipe 1-1/2"Ø Sch.40	pc	6.00					
7.46	Welding Rod	kg	3.00					
	Sub-Total							
BUILDING 7 : ONE UNIT - ONE CLASSROOM PRE - SCHOOL BUILDING (BUILDING 13) - 1 CL								
6.00	Doors and Windows							
	Replacement of doors							
6.03	D-1, Panel Door (0.90m x 2.10m on 150mm Wooden Jamb complete with Accessories (lever type door knob)	set	2.00					
	Replacement of toilet door							
6.34	D-1, Flush Door 0.90m x 2.10m on 100mm Wooden Jamb complete with Accessories (lever type door knob)	set	1.00					
	Repair/ rehabilitation of toilet door							
	Repair/ rehabilitation of toilet door	s.m	1.89					
	Repair of damaged windows (replace damaged parts) including toilet - match existing							
	Repair of damaged windows (replace damaged parts) including toilet - match existing	s.m	12.48					
6.01	Removal of Door with Jamb	set	2.00					
	Sub-total							
9.00	Ceiling and Carpentry Works							
	Replacement of deteriorated ceiling boards and deteriorated ceiling joists including toilet							
	<i>Interior Ceiling</i>	sq.m	65.60					
	Replacement of deteriorated ceiling boards and deteriorated ceiling joists including toilet							
9.01	Removal of Ceiling	sq.m	39.06					
9.06	Plywood, Marine 1/4" x 4' x 8'	pc.	9.00					
	50 mm x 50 mm Ceiling Joist	bd.ft.	12.00					
	50 mm x 75 mm Ceiling Joist	bd.ft.	16.00					
9.13	Rough Lumber, Sun Dried, Tanguile	bd.ft.	28.00					
9.22	Finishing Nails	kg	1.00					
9.23	Common Wire Nails	kg	1.00					
9.24	Concrete Nails	kg	1.00					
9.42	Wood Preservative, Brown	L	1.00					
	<i>Exterior Ceiling</i>	sq.m	32.05					

	Replacement of deteriorated exterior ceiling and deteriorated ceiling joists including toilet						
9.06	Plywood, Marine 1/4" x 4' x 8'	pc.	5.00				
	50 mm x 50 mm Ceiling Joist	bd.ft.	15.00				
	50 mm x 75 mm Ceiling Joist	bd.ft.	13.00				
9.13	Rough Lumber, Sun Dried, Tanguile	bd.ft.	28.00				
9.22	Finishing Nails	kg	1.00				
9.23	Common Wire Nails	kg	1.00				
9.24	Concrete Nails	kg	1.00				
9.42	Wood Preservative, Brown	L	1.00				
	Repair of blackboard						
	Repair of blackboard	sq.m.	5.76				
	Sub-total						
10.00	Electrical Works						
	Rehabilitation of electrical fixtures						
10.3610	FL 1 x 40W Industrial Type LED Lamp	set	7.00				
	LED Bulb 9 W with Medium Base Keyless Type Porcelain Receptacle	pc	1.00				
	Provision of Wall fan						
	Wall fan, 60W,230V, 60Hz	pcs	2.00				
	Sub-Total						
13.00	Painting Works						
	Wood Surfaces including interior and exterior ceiling, windows and doors and blackboards						
	Wood Surfaces	sq.m	111.59				
13.04	Enamel, Flatwall	gal	6.00				
13.05	Enamel, Semi Gloss	gal	6.00				
13.16	Paint Thinner	gal	3.00				
	All concrete surfaces						
	Concrete Surfaces	sq m	161.12				
13.01	Latex, Flat	gal	7.00				
13.02	Latex, Semi Gloss	gal	7.00				
13.20	Acri Color	qrt	2.00				
	Roofing and Accessories	sq.m	106.00				
13.13	Gloss Acrylic Roof Paint	gal	9.00				
13.16	Paint Thinner	gal	3.00				
	Window grills						
	Window grills/ door grills						
13.10	Primer, Red Oxide	gal	1.00				
13.06	Enamel, Quick Dry	gal	1.00				
13.16	Paint Thinner	gal	1.00				
	Removal of existing painting	s.m	161.12				
	Sub-Total						

	Ramp on Fill (with Ramp Railing)	cu.m	0.54					
2.01	Portland Cement	bag	5.00					
2.05	Crushed Gravel 1"	cu.m	0.75					
2.03	Washed Sand	cu.m	0.50					
5.06	10mm x 6m RSB	kg	23.28					
3.02	G.I. Tie Wire	kg	1.00					
7.2610	G.I. Pipe 1-1/2"Ø Sch.40	pc	6.00					
7.46	Welding Rod	kg	3.00					
	Sub-Total							
BUILDING 8 : ONE UNIT - TWO CLASSROOM MARCOS TYPE SCHOOL BUILDING (BUILDING 14) - 2 CL								
1.00	Earthworks							
	<i>Replacement of wooden partition wall with new CHB partition wall and concrete end wall and rear wall side protection</i>							
1.02	Structural Excavation	cu.m	12.32					
1.03	Backfilling and Compaction	cu.m	10.79					
1.04	Gravel Bedding G-1	cu.m	0.73					
1.05	Soil Poisoning	sq.m	7.33					
	Sub-total							
2.00	Concreting Works							
	<i>Provision of concrete column on pedestal enclosing steel columns and columns (0.30mx0.30m)</i>							
	Concrete column on pedestal							
	<i>Concrete column on pedestal (0.30m x 0.30m.)</i>	cu.m	2.02					
2.01	Portland Cement	bag	19.00					
2.02	Crushed Gravel 3/4"	cu.m	2.25					
2.03	Washed Sand	cu.m	1.25					
	Concrete beams (Front and Rear Walls) at 0.20m x 0.30m							
	<i>Concrete Beams - 0.20m x 0.30m</i>	cu.m	1.44					
2.01	Portland Cement	bag	13.00					
2.02	Crushed Gravel 3/4"	cu.m	1.50					
2.03	Washed Sand	cu.m	0.75					
	<i>Provision of new column on new CHB partition wall at center (0.20m x 0.30m concrete dimension) - 1 at center and 1 each at front and rear wall</i>							
	<i>Column at center (0.20m x 0.30m)</i>	cu.m	0.43					
2.01	Portland Cement	bag	4.00					
2.02	Crushed Gravel 3/4"	cu.m	0.50					

2.03	Washed Sand	cu.m	0.25					
	Provision of new concrete column footing on new CHB partition wall (0.25m x 0.90m x 0.90m) at 1.20 m depth - 1 at center and 1 each at front and rear wall							
	Concrete column footing on new column for new CHB partition wall (0.25m x 0.90m x 0.90m)	cu.m	0.61					
2.01	Portland Cement	bag	6.00					
2.02	Crushed Gravel 3/4"	cu.m	0.75					
2.03	Washed Sand	cu.m	0.50					
	Provision of new concrete wall footing on new CHB partition wall (0.25 x 0.40m) at 0.60m depth							
	Concrete wall footing on new CHB partition wall (0.25 x 0.40m) at 0.60m depth	cu.m	0.75					
2.01	Portland Cement	bag	7.00					
2.02	Crushed Gravel 3/4"	cu.m	0.75					
2.03	Washed Sand	cu.m	0.50					
	Concrete end wall and rear wall side protection							
	Concrete end wall and rear wall side protection	cu.m	0.95					
2.01	Portland Cement	bag	9.00					
2.02	Crushed Gravel 3/4"	cu.m	1.00					
2.03	Washed Sand	cu.m	0.50					
	Repair of corridor slab							
	Repair of cracked corridor slab	cu.m	3.04					
2.01	Portland Cement	bag	28.00					
2.02	Crushed Gravel 3/4"	cu.m	3.25					
2.03	Washed Sand	cu.m	1.75					
	Sub-total							
3.00	Rebar Works							
	Reinforcing deformed bars for columns enclosing steel columns, new columns at partition wall, roof beams, column footings, wall footings and classroom floor slab							
3.01	Column enclosing steel columns - 8 sets: Columns (0.30m x 0.30m) - using 4 - 16mm def bars with 10mm def bars ties with spacing of 1 @ 50mm; 8 @ 75mm and rest @ 150mm to center	kg	265.75					
3.01	New column on partition wall - 3 sets: Columns (0.20m x 0.30m) - using 4 - 16mm def bars with 10mm def bars ties with spacing of 1 @ 50mm; 8 @ 75mm and rest @ 150mm to center	kg	120.12					

3.01	Column footings (0.25m x 0.90m x 0.90m) - using 12mm def bars (4 pcs bothways) - 3 sets	kg	21.31					
3.01	Roof beam (Front and rear) using 16mm def bars with 10mm stirrups with spacing 1 @ 50mm; 8 @ 75mm and rest @ 150mm to center	kg	251.47					
3.01	Wall footing (0.25m x 0.40m) - using 10mm def bars (3 longitudinal bars with 10 mm def bar ties at 0.30m o.c.)	kg	18.48					
3.02	G.I. Tie Wire	kg	17.03					
	Sub-total							
4.00	Formworks							
	Concrete column on partition wall, column on pedestal, roof beam and end wall and rear wall protection							
	Concrete column on partition wall, column on pedestal, roof beam and end wall and rear wall protection	sq.m	25.56					
4.01	Coco Lumber	bd.ft	109.00					
4.02	Plywood Ordinary, 1/4" x 4' x 8'	pc	5.00					
4.04	CWN, Assorted	kg	2.00					
	Sub-total							
5.00	Masonry Works							
	Replacement of wooden partition wall with CHB wall and covering of walls considering provision of 1 additional door per room (transfer location of doors)							
	<i>Masonry Wall</i>	sq.m	36.88					
5.04	CHB 4" thk	pc	461.00					
5.02	Portland Cement	bag	13.00					
5.03	Washed Sand	cu.m	2.00					
5.06	10mm x 6m RSB	kg	49.00					
5.07	G.I. Tie Wire	kg	1.00					
	Plastering/ finishing of new masonry wall including repair of cracks on walls							
	<i>Plastering/ finishing of walls including repair of cracks on walls</i>	sq.m	85.76					
5.02	Portland Cement	bag	29.00					
5.03	Washed Sand	cu.m	3.00					
	Demolition of damaged attached toilet							
5.01	Demolition of Masonry Wall	sq.m	7.00					
	Sub-total							
6.00	Doors & Windows							
	Provision of new doors (2 doors per room)							

6.03	D-1, Panel Door (0.90m x 2.10m on 150mm Wooden Jamb complete with Accessories (lever type door knob)	set	4.00					
	Provision of new windows							
6.35	W - 1, (2.6 x 1.6 m) Jalousie Window with Clear Glass Blades on JalouPlus Type Silver Colored Frame and Fixed Clear Glass Transom on 50 x 100 mm Wooden Jamb complete with Accessories	set	2.00					
6.36	W - 2, (1.3 x 1.6 m) Jalousie Window with Clear Glass Blades on JalouPlus Type Silver Colored Frame and Fixed Clear Glass Transom on 50 x 100 mm Wooden Jamb complete with Accessories	set	4.00					
6.01	Removal of Door with Jamb	set	2.00					
	Sub-total							
7.00	Steel Works							
	<i>Replacement of deteriorated c purlins (15 pcs)</i>							
7.05	LC 100 x 50 x 15 x 2.00mm	kg	227.00					
7.46	Welding Rod	kg	5.00					
13.12	Primer, Zinc Chromate	gal	5.00					
	Sub-total							
8.00	Roofing Works							
	Replacement of all roofing sheets, ridge roll and flashing including attached toilet							
8.01	Removal of Roofing Sheets	sq.m	144.00					
8.02	Removal of Ridge Roll	pc	6.00					
8.03	Removal of Flashing	pc	11.00					
8.16	G.I. Long-Span Roofing, Corrugated, Pre-Painted, 1220mm x 0.5mm BMT	m	159.00					
8.17	G.I. Ridge Roll, Preformed, Pre-Painted, 0.610m x 2.440m x 0.5mm BMT	pc	6.00					
8.19	G.I. Flashing, Preformed, Pre-Painted, 0.610m x 2.440m x 0.5mm BMT	pc	11.00					
7.1040	L 20 x 20 x 2mm	kg	44.00					
7.1020	L 38 x 38 x 4.5mm	kg	66.00					
	3" Flat head Countersunk screw	pc	170.00					
8.0900	J-Bolt (6mm dia.)	pc	1,008.00					
8.35	Teckscrew 2-1/2"	pc	1,176.00					
8.36	Roof Sealant	L	4.00					
8.37	Blind Rivets	pc	150.00					
	Sub-total							
9.00	Ceiling and Carpentry Works							

	Replacement of all ceiling boards and deteriorated ceiling joists including attached toilet							
	<i>Interior Ceiling</i>	sq.m	94.18					
	Replacement of all ceiling boards and deteriorated ceiling joists including toilet (re -using good condition removed purlins from other buildings)							
9.01	Removal of Ceiling	sq.m	146.32					
9.06	Plywood, Marine 1/4" x 4' x 8'	pc.	33.00					
	50 mm x 50 mm Ceiling Joist	bd.ft.	165.00					
	50 mm x 75 mm Ceiling Joist	bd.ft.	246.00					
9.13	Rough Lumber, Sun Dried, Tanguile	bd.ft.	411.00					
9.22	Finishing Nails	kg	2.00					
9.23	Common Wire Nails	kg	8.00					
9.24	Concrete Nails	kg	2.00					
9.42	Wood Preservative, Brown	L	3.00					
	<i>Exterior Ceiling</i>	sq.m	56.32					
	Provision of exterior ceiling including toilet							
9.06	Plywood, Marine 1/4" x 4' x 8'	pc.	20.00					
	50 mm x 50 mm Ceiling Joist	bd.ft.	126.00					
	50 mm x 75 mm Ceiling Joist	bd.ft.	120.00					
9.13	Rough Lumber, Sun Dried, Tanguile	bd.ft.	246.00					
9.22	Finishing Nails	kg	2.00					
9.23	Common Wire Nails	kg	5.00					
9.24	Concrete Nails	kg	2.00					
9.42	Wood Preservative, Brown	L	2.00					
9.18	Fascia Board, Fiber Cement 12" x 8'	pc	12.00					
9.15	Ceiling Vent 1" x 12" x 4' with Screen	pc	6.00					
	<i>Blackboards</i>	sq.m.	11.52					
	Replacement of blackboards							
9.14	S4S Lumber, Kiln Dried, Tanguile	bd.ft.	51.00					
9.43	Lawanit, 1/4" thk	pc.	4.00					
9.22	Finishing Nails	kg	1.00					
9.23	Common Wire Nails	kg	1.00					
9.24	Concrete Nails	kg	1.00					
	Sub-total							
10.00	Electrical Works							
	Total replacement of existing electrical wirings and fixtures							
	Removal of existing electrical wires and fixtures	s.m	94.18					
	<i>Roughing-ins</i>							
10.01	Electrical Conduit uPVC, 15mmØ	pc	48.00					
10.06	RSC 20mmØ	pc	1.00					

10.34	Entrance Cap 20mm dia.	pc	1.00				
10.16	Junction Box, 4" x 4" G.I.	pc	12.00				
10.17	Utility Box, 2" x 4" G.I.	pc	8.00				
10.37	Grounding Rod, 2.4m x 16mm dia.	pc	1.00				
	<i>Wires & Fixtures</i>						
10.11	3.5 mm ² THHN Wire, Stranded	m	288.00				
10.12	5.5 mm ² THHN Wire, Stranded	m	10.00				
10.28	Duplex Convenience Outlet, Grounding Type, 20A, 250V	pc	4.00				
10.25	3 Single Pole Wall Switches in One Switch Plate (10 AMP, 230V)	pc	2.00				
10.23	Single Pole Wall Switch in One Switch Plate (10 AMP, 230V)	pc	1.00				
10.3610	FL 1 x 40W Industrial Type LED Lamp	set	14.00				
	LED Bulb 9 W with Medium Base Keyless Type Porcelain Receptacle	pc	1.00				
10.48	Panel Box, Flush Type, 4 Branches	set	1.00				
10.40	Circuit Breaker, 40A 2P	set	1.00				
10.38	Circuit Breaker, 20A 2P	set	3.00				
10.54	Vibrating Bell 8"	set	1.00				
	Push Button, 10A, 230V	set	1.00				
10.58	Electrical Tape	pc	2.00				
	Provision of Wall fan						
	Wall fan, 60W,230V, 60Hz	pcs	4.00				
	Sub-total						
	Plumbing Works/ Sanitary Works						
	Repair/ Rehabilitation of toilet and septic tank						
11.62	Water Closet 1.6gpf with Accessories	set	2.00				
11.59	Faucet, Plain Bibb, Brass 1/2"Ø	pc	2.00				
	Sub-total						
13.00	Painting Works						
	Wood Surfaces including interior and exterior ceiling, doors and blackboards						
	<i>Wood Surfaces</i>	sq.m	182.54				
13.04	Enamel, Flatwall	gal	10.00				
13.05	Enamel, Semi Gloss	gal	10.00				
13.16	Paint Thinner	gal	5.00				
	All concrete surfaces						
	<i>Concrete Surfaces</i>	sq m	213.94				
13.01	Latex, Flat	gal	9.00				
13.02	Latex, Semi Gloss	gal	9.00				
13.18	Neutralizer	gal	2.00				
13.20	Acri Color	qrt	3.00				
	Sub-Total						

	Ramp on Fill (with Ramp Railing)	cu.m	0.54					
2.01	Portland Cement	bag	5.00					
2.05	Crushed Gravel 1"	cu.m	0.75					
2.03	Washed Sand	cu.m	0.50					
5.06	10mm x 6m RSB	kg	23.28					
3.02	G.I. Tie Wire	kg	1.00					
7.2610	G.I. Pipe 1-1/2"Ø Sch.40	pc	6.00					
7.46	Welding Rod	kg	3.00					
	Sub-Total							
BUILDING 9 : ONE UNIT - ONE CLASSROOM FVR (BUILDING 15) - 1 CL								
5.00	Masonry Works							
	Covering of walls considering provision of 1 additional door							
	<i>Masonry Wall</i>	sq.m	0.84					
5.04	CHB 4" thk	pc	11.00					
5.02	Portland Cement	bag	1.00					
5.03	Washed Sand	cu.m	1.00					
5.06	10mm x 6m RSB	kg	2.00					
5.07	G.I. Tie Wire	kg	1.00					
	Plastering/ finishing of new masonry wall including repair of cracks on walls							
	<i>Plastering/ finishing of walls including repair of cracks on walls</i>	sq.m	3.68					
5.02	Portland Cement	bag	2.00					
5.03	Washed Sand	cu.m	1.00					
	Sub-total							
6.00	Doors and Windows							
	Provision of new doors (2 doors per room)							
6.03	D-1, Panel Door (0.90m x 2.10m on 150mm Wooden Jamb complete with Accessories (lever type door knob)	set	2.00					
	Repair of damaged windows (replace damaged parts) - match existing							
	<i>Repair of damaged windows (replace damaged parts) - match existing</i>	s.m	8.32					
6.01	Removal of Door with Jamb	set	1.00					
	Sub-total							
7.00	Steel Works							
	<i>Trusses and Members</i>							
9.34	Removal of Wooden Truss/ Beams	bd.ft	672.00					
9.35	Removal of Purlins	bd.ft	331.00					

7.0900	L 50 x 50 x 6mm	kg	798.00				
7.0200	2" x 4" x 1.5mm C-purlins	kg	568.00				
7.1010	L 50 x 50 x 2mm	kg	11.00				
7.1810	Machine Bolts (10 mm dia.)	pc	156.00				
7.2200	12mmØ Sag Rods with Standard Nuts and washers	pc	96.00				
7.20	Plain Round Bar 16mmØ x 6m	pc	9.00				
7.31	Turn Buckle 16 mmØ	pc	8.00				
7.33	Anchor Bolt with Nuts and Washer, 16mmØ x 50mm x 300mm	pc	24.00				
7.25	Steel Plate 1.20m x 2.40m x 10mm	pc	2.00				
7.24	Steel Plate 1.20m x 2.40m x 12mm	pc	0.30				
7.46	Welding Rod	kg	33.00				
13.12	Primer, Zinc Chromate	gal	3.00				
	Re-fitting and re-installation of window grills						
	Re-fitting and re-installation of window grills at front windows	sq.ft	4.00				
	Sub-total						
8.00	Roofing Works						
	Replacement of all roofing sheets, ridge roll and flashing						
8.01	Removal of Roofing Sheets	sq.m	95.83				
8.02	Removal of Ridge Roll	pc	4.00				
8.03	Removal of Flashing	pc	10.00				
8.05	Removal of Fascia Board	pc	17.00				
8.16	G.I. Long-Span Roofing, Corrugated, Pre-Painted, 1220mm x 0.5mm BMT	m	106.00				
8.17	G.I. Ridge Roll, Preformed, Pre-Painted, 0.610m x 2.440m x 0.5mm BMT	pc	4.00				
8.19	G.I. Flashing, Preformed, Pre-Painted, 0.610m x 2.440m x 0.5mm BMT	pc	10.00				
7.1040	L 20 x 20 x 2mm	kg	70.00				
7.1020	L 38 x 38 x 4.5mm	kg	66.00				
	3" Flat head Countersunk screw	pc	265.00				
8.0900	J-Bolt (6mm dia.)	pc	662.00				
8.35	Teckscrew 2-1/2"	pc	772.00				
8.36	Roof Sealant	L	2.00				
8.37	Blind Rivets	pc	84.00				
	Sub-total						
9.00	Ceiling and Carpentry Works						
	Replacement of all ceiling boards and deteriorated ceiling joists						
	Interior Ceiling	sq.m	56.00				

	Replacement of all ceiling boards and deteriorated ceiling joists (re -using good condition removed purlins)						
9.01	Removal of Ceiling	sq.m	88.71				
9.06	Plywood, Marine 1/4" x 4' x 8'	pc.	20.00				
	50 mm x 50 mm Ceiling Joist	bd.ft.	39.00				
	50 mm x 75 mm Ceiling Joist	bd.ft.	58.00				
9.13	Rough Lumber, Sun Dried, Tanguile	bd.ft.	97.00				
9.22	Finishing Nails	kg	2.00				
9.23	Common Wire Nails	kg	2.00				
9.24	Concrete Nails	kg	2.00				
9.42	Wood Preservative, Brown	L	2.00				
	<i>Exterior Ceiling</i>	sq.m	32.71				
	Replacement of exterior ceiling and deteriorated ceiling joists (re -using good condition removed purlins)						
9.06	Plywood, Marine 1/4" x 4' x 8'	pc.	12.00				
	50 mm x 50 mm Ceiling Joist	bd.ft.	44.00				
	50 mm x 75 mm Ceiling Joist	bd.ft.	41.00				
9.13	Rough Lumber, Sun Dried, Tanguile	bd.ft.	85.00				
9.22	Finishing Nails	kg	1.00				
9.23	Common Wire Nails	kg	2.00				
9.24	Concrete Nails	kg	1.00				
9.42	Wood Preservative, Brown	L	2.00				
9.18	Fascia Board, Fiber Cement 12" x 8'	pc	17.00				
9.15	Ceiling Vent 1" x 12" x 4' with Screen	pc	4.00				
	<i>Blackboards</i>	sq.m.	5.76				
	Replacement of blackboards						
9.14	S4S Lumber, Kiln Dried, Tanguile	bd.ft.	26.00				
9.43	Lawanit, 1/4" thk	pc.	2.00				
9.22	Finishing Nails	kg	1.00				
9.23	Common Wire Nails	kg	1.00				
9.24	Concrete Nails	kg	1.00				
	Sub-total						
10.00	Electrical Works						
	Total replacement of existing electrical wirings and fixtures						
	Removal of existing electrical wires and fixtures	s.m	56.00				
	<i>Roughing-ins</i>						
10.01	Electrical Conduit uPVC, 15mmØ	pc	20.00				
10.06	RSC 20mmØ	pc	1.00				
10.34	Entrance Cap 20mm dia.	pc	1.00				
10.16	Junction Box, 4" x 4" G.I.	pc	6.00				
10.17	Utility Box, 2" x 4" G.I.	pc	4.00				

10.37	Grounding Rod, 2.4m x 16mm dia.	pc	1.00					
	<i>Wires & Fixtures</i>							
10.11	3.5 mm ² THHN Wire, Stranded	m	180.00					
10.12	5.5 mm ² THHN Wire, Stranded	m	10.00					
10.28	Duplex Convenience Outlet, Grounding Type, 20A, 250V	pc	2.00					
10.25	3 Single Pole Wall Switches in One Switch Plate (10 AMP, 230V)	pc	1.00					
10.3610	FL 1 x 40W Industrial Type LED Lamp	set	7.00					
10.48	Panel Box, Flush Type, 4 Branches	set	1.00					
10.40	Circuit Breaker, 40A 2P	set	1.00					
10.38	Circuit Breaker, 20A 2P	set	3.00					
10.54	Vibrating Bell 8"	set	1.00					
	Push Button, 10A, 230V	set	1.00					
10.58	Electrical Tape	pc	2.00					
	Provision of Wall fan							
	Wall fan, 60W,230V, 60Hz	pcs	2.00					
	Sub-Total							
13.00	Painting Works							
	Wood Surfaces including interior and exterior ceiling, windows and doors and blackboards							
	<i>Wood Surfaces</i>	sq.m	102.03					
13.04	Enamel, Flatwall	gal	6.00					
13.05	Enamel, Semi Gloss	gal	6.00					
13.16	Paint Thinner	gal	3.00					
	All concrete surfaces							
	<i>Concrete Surfaces</i>	sq m	124.36					
13.01	Latex, Flat	gal	5.00					
13.02	Latex, Semi Gloss	gal	5.00					
13.18	Neutralizer	gal	1.00					
13.20	Acri Color	qrt	2.00					
	Window grills							
	Window grills/ door grills							
13.10	Primer, Red Oxide	gal	1.00					
13.06	Enamel, Quick Dry	gal	1.00					
13.16	Paint Thinner	gal	1.00					
	Removal of existing painting	s.m	124.36					
	Sub-Total							
BUILDING 10 : ONE UNIT THREE (3) - SEATER TOILET (BUILDING 16)								
2.00	Concreting Works							
	Re-pouring of affected concrete slab							
	Re-pouring of affected concrete slab	cu.m	0.12					

2.01	Portland Cement	bag	2.00					
2.02	Crushed Gravel 3/4"	cu.m	0.25					
2.03	Washed Sand	cu.m	0.25					
	Demolition of affected concrete slab							
2.04	Demolition of reinforced concrete	cu.m	0.12					
	Sub-total							
5.00	Masonry Works							
	Plastering/ finishing of affected walls							
	Plastering/ finishing of affected walls	sq.m	2.00					
5.02	Portland Cement	bag	1.00					
5.03	Washed Sand	cu.m	1.00					
	Demolition of wall to remove and replace pipes and fittings							
5.01	Demolition of Masonry Wall	sq.m	1.00					
	Sub-total							
6.00	Doors and Windows							
	Repair/ rehabilitation of doors							
	Repair/ rehabilitation of doors	s.m	4.41					
	Repair of damaged windows (replace damaged parts) and provision of jalousie windows - match existing							
	Repair of damaged windows (replace damaged parts) and provision of jalousie windows - match existing	s.m	0.72					
	Sub-total							
10.00	Electrical Works							
	LED Bulb 9 W with Medium Base Keyless Type Porcelain Receptacle	pc	4.00					
	Sub-Total							
	Plumbing Works/ Sanitary Works							
	Repair/ Rehabilitation of handwashing facility and toilet							
11.59	Faucet, Plain Bibb, Brass 1/2"Ø	set	4.00					
11.44	Gate Valve, 1/2"Ø	set	1.00					
11.06	PP-R Pipe 1/2"Ø	set	4.00					
11.15	PP-R Tee, 1/2"Ø	set	4.00					
11.21	PP-R Elbow 90o x 1/2"Ø	set	4.00					
11.65	S.S.Floor Drain 4' x 4"	pc	2.00					
11.66	Teflon Tape	roll	2.00					
12.30	uPVC P-Trap 2"	pc	2.00					
12.07	uPVC Sanitary Pipe 2"Ø	pc	2.00					
12.11	uPVC Elbow 90o x 2"Ø	pc	2.00					
12.17	uPVC Tee 2" x 2"	pc	2.00					
12.09	uPVC Sanitary Pipe 4"Ø	pc	4.00					
12.13	uPVC Elbow 90o x 4"Ø	pc	5.00					

12.33	PVC Cement	can	1.00					
	Sub-Total							
13.00	Painting Works							
	Wood Surfaces including interior and exterior ceiling, windows and doors and blackboards							
	Wood Surfaces	sq.m	24.18					
13.04	Enamel, Flatwall	gal	2.00					
13.05	Enamel, Semi Gloss	gal	2.00					
13.16	Paint Thinner	gal	1.00					
	All concrete surfaces							
	Concrete Surfaces	sq m	71.60					
13.01	Latex, Flat	gal	3.00					
13.02	Latex, Semi Gloss	gal	3.00					
13.20	Acri Color	qrt	1.00					
	Removal of existing painting	s.m	71.60					
	Sub-Total							
14.00	Tile Works							
	Repair of damaged and affected tiles (match existing)							
14.04	Glazed Wall Tiles 20cm x 20cm	pc	25.00					
14.16	Tile Adhesive 25 kg/bag	bag	1.00					
14.14	Tile Grout 2 kg/bag	bag	1.00					
	Sub-Total							
BUILDING 11 : ONE UNIT - THREE CLASSROOM BLSB TYPE BUILDING TEEP REPAIRED (BUILDING 19) - 3 CL								
1.00	Earthworks							
	Replacement of wooden partition wall with new CHB partition wall (Partition wall between Room 1 & 2)							
1.02	Structural Excavation	cu.m	2.68					
1.03	Backfilling and Compaction	cu.m	1.65					
1.04	Gravel Bedding G-1	cu.m	0.37					
1.05	Soil Poisoning	sq.m	4.01					
	Sub-total							
2.00	Concreting Works							
	Provision of new column on new CHB partition wall at center (0.20m x 0.30m concrete dimension)							
	Column at center (0.20m x 0.30m)	cu.m	0.14					
2.01	Portland Cement	bag	2.00					
2.02	Crushed Gravel 3/4"	cu.m	0.25					
2.03	Washed Sand	cu.m	0.25					
	Provision of new concrete column footing on new CHB partition wall (0.25m x 0.90m x 0.90m) at 1.20 m depth							

	<i>Concrete column footing on new column for new CHB partition wall (0.25m x 0.90m x 0.90m)</i>	cu.m	0.20				
2.01	Portland Cement	bag	2.00				
2.02	Crushed Gravel 3/4"	cu.m	0.25				
2.03	Washed Sand	cu.m	0.25				
	<i>Provision of new concrete wall footing on new CHB partition wall (0.25 x 0.40m) at 0.60m depth</i>						
	<i>Concrete wall footing on new CHB partition wall (0.25 x 0.40m) at 0.60m depth</i>	cu.m	0.80				
2.01	Portland Cement	bag	8.00				
2.02	Crushed Gravel 3/4"	cu.m	1.00				
2.03	Washed Sand	cu.m	0.50				
	<i>Repair of cracked classroom floor slab and corridor slab</i>						
	<i>Repair of cracked classroom floor slab and corridor slab</i>	cu.m	1.10				
2.01	Portland Cement	bag	10.00				
2.02	Crushed Gravel 3/4"	cu.m	1.25				
2.03	Washed Sand	cu.m	0.75				
	Sub-total						
3.00	Rebar Works						
	<i>Reinforcing deformed bars for new columns, column footings and wall footings</i>						
3.01	New column on partition wall: Columns (0.20m x 0.30m) - using 4 - 16mm def bars with 10mm def bars ties with spacing of 1 @ 50mm; 8 @ 75mm and rest @ 150mm to center	kg	40.04				
3.01	Column footings (0.25m x 0.90m x 0.90m) - using 12mm def bars (4 pcs bothways)	kg	7.10				
3.01	Wall footing (0.25m x 0.40m) - using 10mm def bars (3 longitudinal bars with 10 mm def bar ties at 0.30m o.c.)	kg	19.71				
3.02	G.I. Tie Wire	kg	2.67				
	Sub-total						
4.00	Formworks						
	<i>Formworks for new column on partition wall</i>						
	<i>New column on partition wall</i>	sq.m	1.20				
4.01	Coco Lumber	bd.ft	21.00				
4.02	Plywood Ordinary, 1/4" x 4' x 8'	pc	1.00				
4.04	CWN, Assorted	kg	1.00				
	Sub-total						
5.00	Masonry Works						

	Replacement of wooden partition wall between Room 1 & 2 with CHB wall and covering of walls considering provision of 1 additional door per room						
	Masonry Wall	sq.m	24.92				
5.04	CHB 4" thk	pc	312.00				
5.02	Portland Cement	bag	9.00				
5.03	Washed Sand	cu.m	2.00				
5.06	10mm x 6m RSB	kg	34.00				
5.07	G.I. Tie Wire	kg	1.00				
	Plastering/ finishing of new masonry wall including repair of cracks on walls						
	Plastering/ finishing of walls including repair of cracks on walls	sq.m	61.84				
5.02	Portland Cement	bag	21.00				
5.03	Washed Sand	cu.m	3.00				
	Demolition of Masonry Wall for additional door						
5.01	Demolition of Masonry Wall	sq.m	2.16				
	Sub-total						
6.00	Doors & Windows						
	Provision of new doors (2 doors per room)						
6.03	D-1, Panel Door (0.90m x 2.10m on 150mm Wooden Jamb complete with Accessories (lever type door knob)	set	6.00				
	Replacement of toilet door						
6.46	D-3 Flush Door 0.60m x 2.10m on 150mm Wooden Jamb complete with Accessories	set	1.00				
	Repair of damaged windows (replace damaged parts) and provision of jalousie windows - match existing including toilets						
	Repair of damaged windows (replace damaged parts) and provision of jalousie windows - match existing including toilets	s.m	20.80				
6.01	Removal of Door with Jamb	set	4.00				
	Sub-total						
7.00	Steel Works						
	<i>Trusses and Members</i>						
9.34	Removal of Wooden Truss/ Beams	bd.ft	882.00				
9.35	Removal of Purlins	bd.ft	672.00				
7.0900	L 50 x 50 x 6mm	kg	1,679.00				
7.0200	2" x 4" x 1.5mm C-purlins	kg	1,376.00				
7.1010	L 50 x 50 x 2mm	kg	33.00				
7.1810	Machine Bolts (10 mm dia.)	pc	364.00				

7.2200	12mmØ Sag Rods with Standard Nuts and washers	pc	144.00				
7.20	Plain Round Bar 16mmØ x 6m	pc	24.00				
7.31	Turn Buckle 16 mmØ	pc	24.00				
7.33	Anchor Bolt with Nuts and Washer, 16mmØ x 50mm x 300mm	pc	56.00				
7.25	Steel Plate 1.20m x 2.40m x 10mm	pc	4.00				
7.24	Steel Plate 1.20m x 2.40m x 12mm	pc	0.70				
7.46	Welding Rod	kg	68.00				
13.12	Primer, Zinc Chromate	gal	7.00				
	Re-fitting and re-installation of window grills and door grills						
	Re-fitting and re-installation of window grills and door grills	sq.ft	6.00				
	Sub-total						
8.00	Roofing Works						
	Replacement of all roofing sheets, ridge roll and flashing						
8.01	Removal of Roofing Sheets	sq.m	197.76				
8.02	Removal of Ridge Roll	pc	9.00				
8.03	Removal of Flashing	pc	10.00				
8.05	Removal of Fascia Board	pc	25.00				
8.16	G.I. Long-Span Roofing, Corrugated, Pre-Painted, 1220mm x 0.5mm BMT	m	218.00				
8.17	G.I. Ridge Roll, Preformed, Pre-Painted, 0.610m x 2.440m x 0.5mm BMT	pc	9.00				
8.19	G.I. Flashing, Preformed, Pre-Painted, 0.610m x 2.440m x 0.5mm BMT	pc	10.00				
7.1040	L 20 x 20 x 2mm	kg	108.00				
7.1020	L 38 x 38 x 4.5mm	kg	66.00				
	3" Flat head Countersunk screw	pc	415.00				
8.0900	J-Bolt (6mm dia.)	pc	1,512.00				
8.35	Teckscrew 2-1/2"	pc	1,764.00				
8.36	Roof Sealant	L	6.00				
8.37	Blind Rivets	pc	225.00				
	Sub-total						
9.00	Ceiling and Carpentry Works						
	Replacement of all ceiling boards and deteriorated ceiling joists						
	Interior Ceiling	sq.m	144.00				
	Replacement of all ceiling boards and deteriorated ceiling joists (re -using good condition removed purlins)						
9.01	Removal of Ceiling	sq.m	195.96				
9.06	Plywood, Marine 1/4" x 4' x 8'	pc.	50.00				

	50 mm x 50 mm Ceiling Joist	bd.ft.	176.00				
	50 mm x 75 mm Ceiling Joist	bd.ft.	264.00				
9.13	Rough Lumber, Sun Dried, Tanguile	bd.ft.	440.00				
9.22	Finishing Nails	kg	3.00				
9.23	Common Wire Nails	kg	8.00				
9.24	Concrete Nails	kg	3.00				
9.42	Wood Preservative, Brown	L	5.00				
	<i>Exterior Ceiling</i>	sq.m	51.96				
	Replacement of exterior ceiling and deteriorated ceiling joists (re-using good condition removed purlins)						
9.06	Plywood, Marine 1/4" x 4' x 8'	pc.	18.00				
	50 mm x 50 mm Ceiling Joist	bd.ft.	81.00				
	50 mm x 75 mm Ceiling Joist	bd.ft.	77.00				
9.13	Rough Lumber, Sun Dried, Tanguile	bd.ft.	158.00				
9.22	Finishing Nails	kg	1.00				
9.23	Common Wire Nails	kg	3.00				
9.24	Concrete Nails	kg	1.00				
9.42	Wood Preservative, Brown	L	2.00				
9.18	Fascia Board, Fiber Cement 12" x 8'	pc	25.00				
9.15	Ceiling Vent 1" x 12" x 4' with Screen	pc	8.00				
	<i>Blackboards</i>	sq.m.	11.52				
	Replacement of blackboards						
9.14	S4S Lumber, Kiln Dried, Tanguile	bd.ft.	51.00				
9.43	Lawanit, 1/4" thk	pc.	4.00				
9.22	Finishing Nails	kg	1.00				
9.23	Common Wire Nails	kg	1.00				
9.24	Concrete Nails	kg	1.00				
	Sub-total						
10.00	Electrical Works						
	Total replacement of existing electrical wirings and fixtures						
	Removal of existing electrical wires and fixtures	s.m	144.00				
	<i>Roughing-ins</i>						
10.01	Electrical Conduit uPVC, 15mmØ	pc	72.00				
10.06	RSC 20mmØ	pc	1.00				
10.34	Entrance Cap 20mm dia.	pc	1.00				
10.16	Junction Box, 4" x 4" G.I.	pc	18.00				
10.17	Utility Box, 2" x 4" G.I.	pc	12.00				
10.37	Grounding Rod, 2.4m x 16mm dia.	pc	1.00				
	<i>Wires & Fixtures</i>						
10.11	3.5 mm ² THHN Wire, Stranded	m	432.00				
10.12	5.5 mm ² THHN Wire, Stranded	m	10.00				
10.28	Duplex Convenience Outlet, Grounding Type, 20A, 250V	pc	6.00				

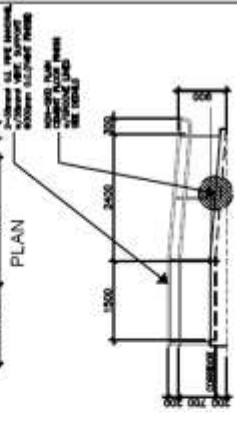
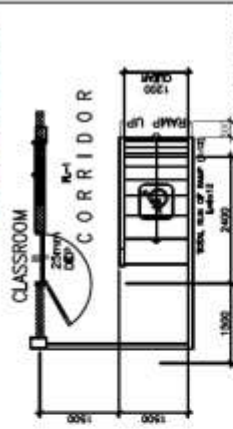
10.25	3 Single Pole Wall Switches in One Switch Plate (10 AMP, 230V)	pc	3.00				
10.23	Single Pole Wall Switch in One Switch Plate (10 AMP, 230V)	pc	1.00				
10.3610	FL 1 x 40W Industrial Type LED Lamp	set	21.00				
	LED Bulb 9 W with Medium Base Keyless Type Porcelain Receptacle	pc	1.00				
10.48	Panel Box, Flush Type, 4 Branches	set	1.00				
10.40	Circuit Breaker, 40A 2P	set	1.00				
10.38	Circuit Breaker, 20A 2P	set	3.00				
10.54	Vibrating Bell 8"	set	1.00				
	Push Button, 10A, 230V	set	1.00				
10.58	Electrical Tape	pc	3.00				
	Provision of Wall fan						
	Wall fan, 60W,230V, 60Hz	pcs	6.00				
	Sub-Total						
13.00	Painting Works						
	Wood Surfaces including interior and exterior ceiling, windows and doors and blackboards						
	Wood Surfaces	sq.m	232.68				
13.04	Enamel, Flatwall	gal	12.00				
13.05	Enamel, Semi Gloss	gal	12.00				
13.16	Paint Thinner	gal	6.00				
	All concrete surfaces						
	Concrete Surfaces	sq m	262.00				
13.01	Latex, Flat	gal	11.00				
13.02	Latex, Semi Gloss	gal	11.00				
13.18	Neutralizer	gal	2.00				
13.20	Acri Color	qrt	3.00				
	Window grills						
	Window grills/ door grills						
13.10	Primer, Red Oxide	gal	1.00				
13.06	Enamel, Quick Dry	gal	1.00				
13.16	Paint Thinner	gal	1.00				
	Removal of existing painting	s.m	218.80				
	Sub-Total						
	Ramp on Fill (with Ramp Railing)	cu.m	0.54				
2.01	Portland Cement	bag	5.00				
2.05	Crushed Gravel 1"	cu.m	0.75				
2.03	Washed Sand	cu.m	0.50				
5.06	10mm x 6m RSB	kg	23.28				
3.02	G.I. Tie Wire	kg	1.00				

7.2610	G.I. Pipe 1-1/2"Ø Sch.40	pc	6.00					
7.46	Welding Rod	kg	3.00					
	Sub-Total							
I	DIRECT COST							0.00
II.	INDIRECT COST 17% of (I - Gen. Req'ts.)							0.00
III	TAX 5% of (I + II)							0.00
IV	TOTAL CONSTRUCTION COST (I + II + III)							0.00

Prepared by:

Section VII. Drawings

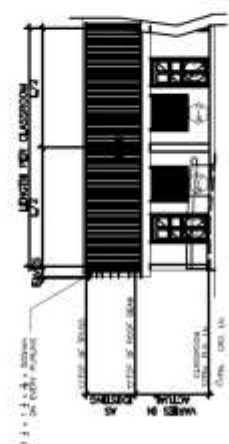
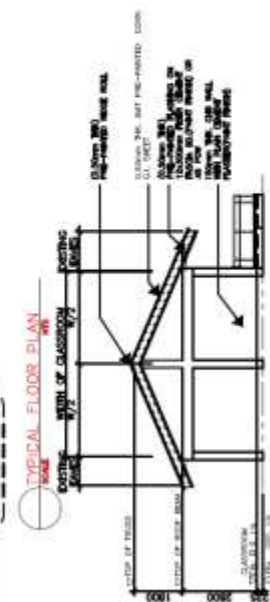
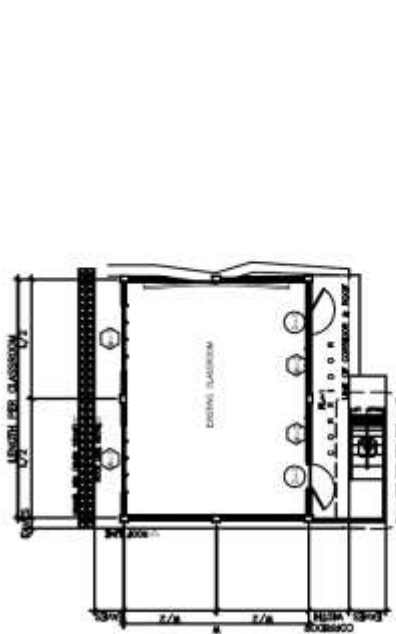
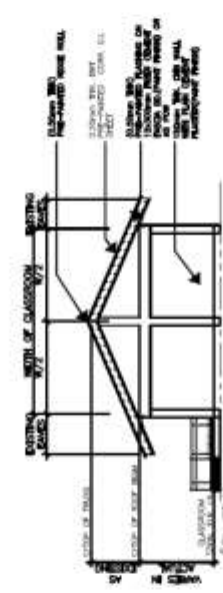
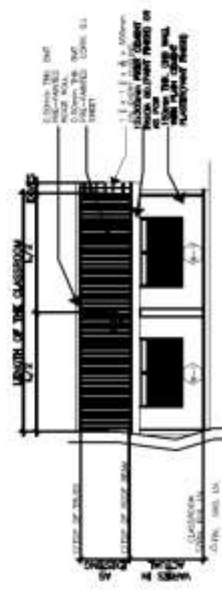
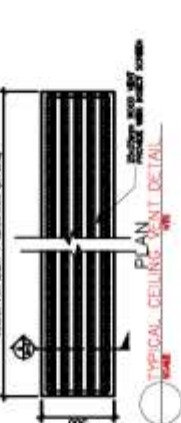
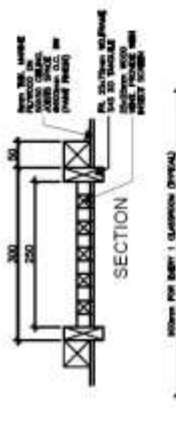
NOTES: 1. ALL DIMENSIONS ARE IN METERS.
2. ALL DIMENSIONS ARE TO FACE UNLESS SPECIFIED OTHERWISE.



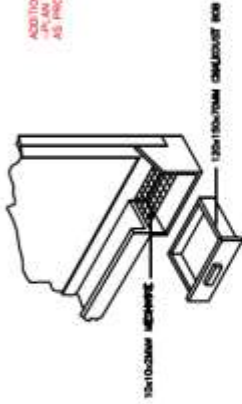
TYPICAL RAMP DETAIL
SCALE: 1:10



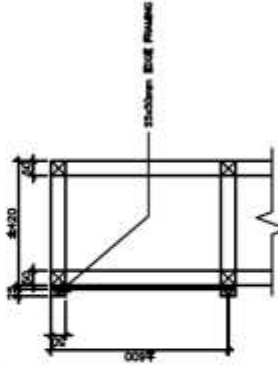
NOTES: 1. ALL DIMENSIONS ARE IN METERS.
2. ALL DIMENSIONS ARE TO FACE UNLESS SPECIFIED OTHERWISE.



ADDITIONAL NOTE:
 -PLAN MAY VARY AS ACTUAL SITUATION OR
 AS PROGRAM OF WORK.



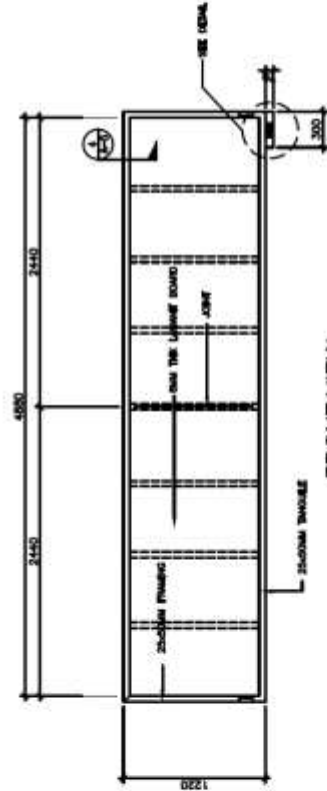
CHALK DUST BOX DETAIL



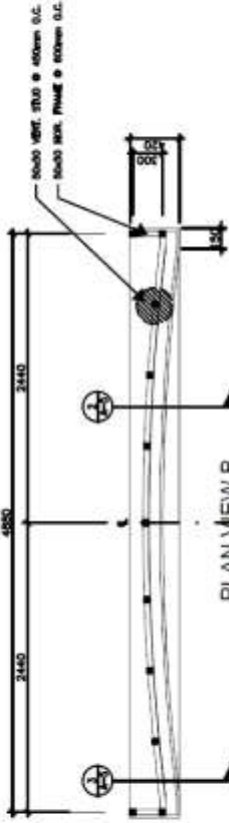
SPOT DETAIL SECTION
 EDGE FRAMING

SPECIFICATION:

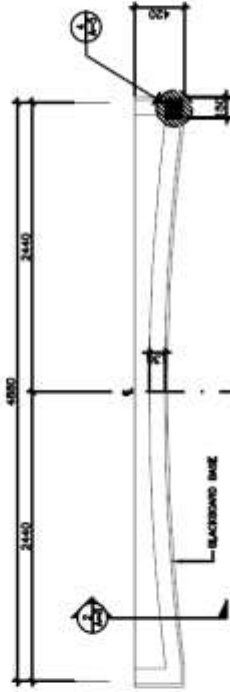
- MATERIALS: -2x40mm SOLID TIMBER OR
 ENGINEERED WOOD FRAME.
 -USE THE LAMINATE BOARD
- FINISHES: -70x120x15mm CHALKDUST BOX
 -24x15x15mm LAMINATE
- FRAME: -FRAMING AND CHALKDUST PART WITH
 GUSSET (TYPE SHOWN PART (200x40))
 -BOARD PART WITH BLACKBOARD PART
 (200x) OR BLACKBOARD SLIDE



FRONT VIEW

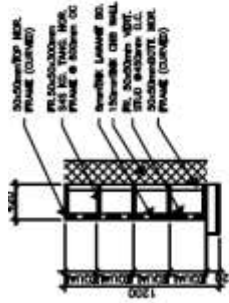


PLAN VIEW B
 SECTION

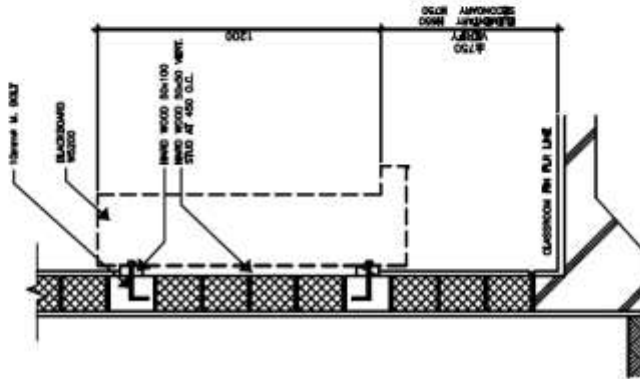


PLAN VIEW A

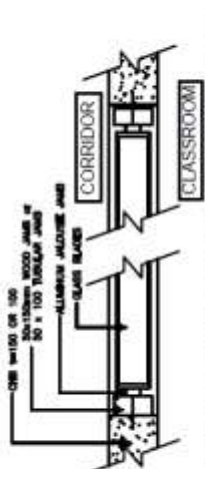
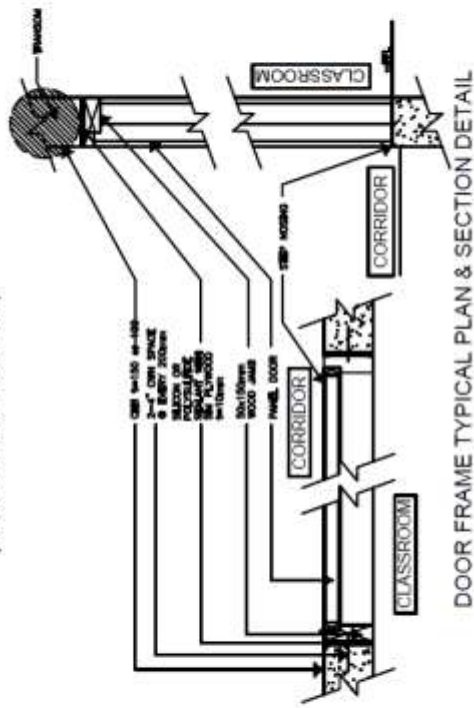
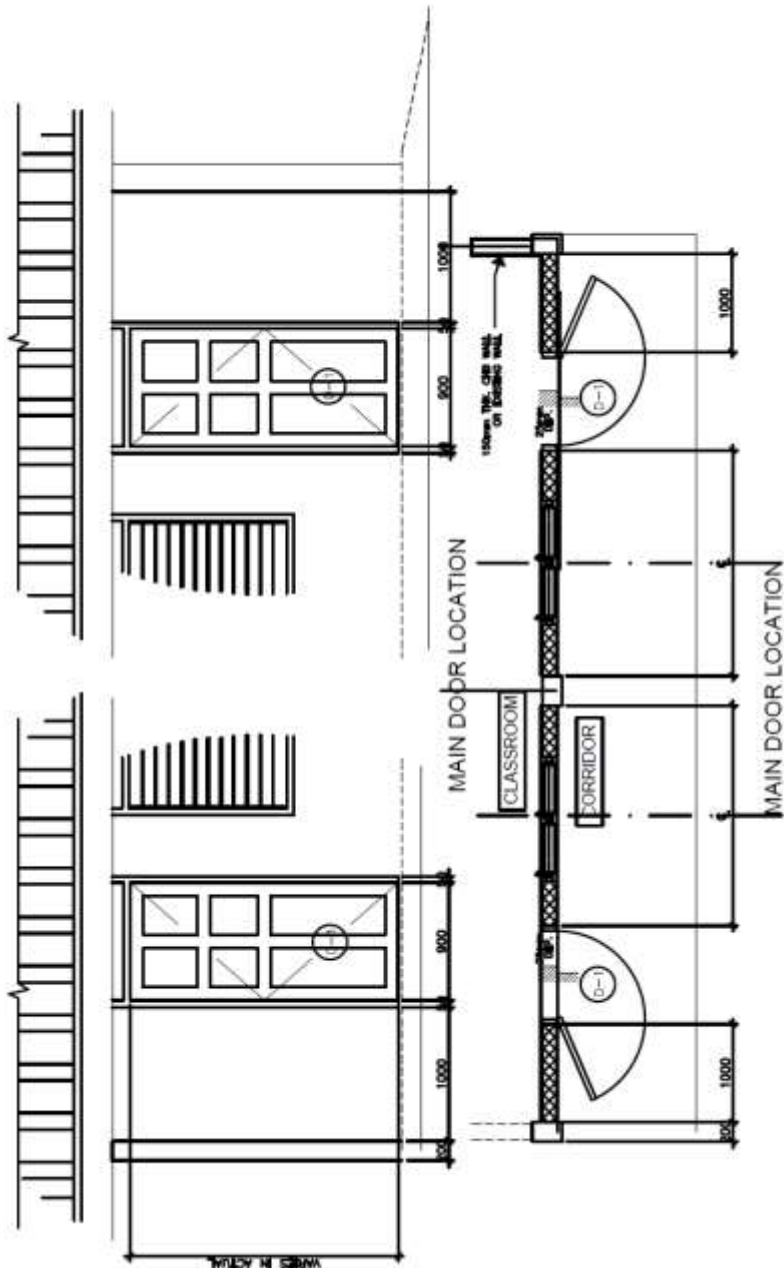
TYPICAL CLASSROOM BLACKBOARD DETAIL
 SCALE



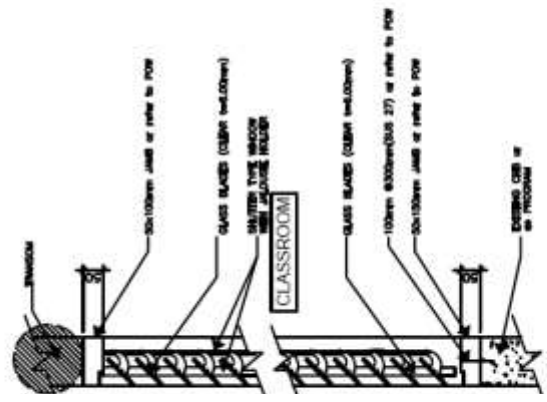
SECTION



CONNECTION SECTION DETAIL

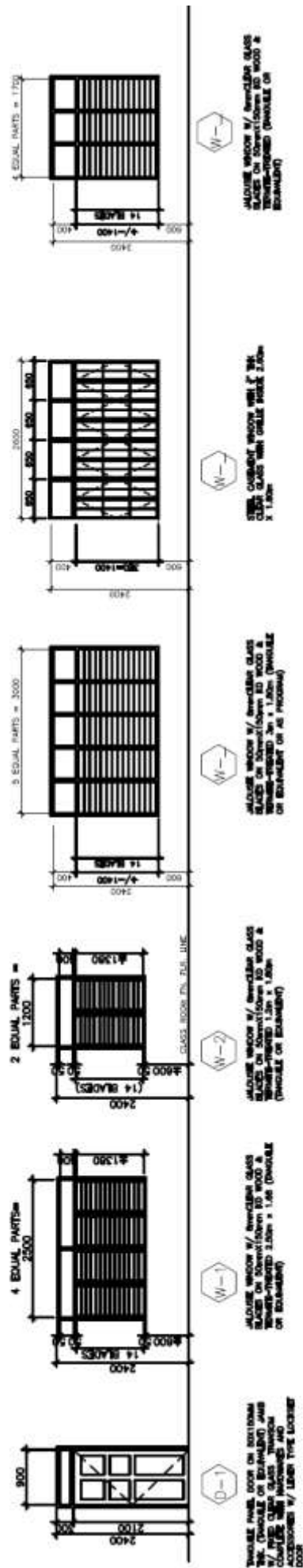


GLASS JALOUSIE TYPICAL DETAIL PLANS



2x4 GLASS JALOUSIE DETAIL

ADDITIONAL NOTE: DO NOT APPLICABLE AS PLANS MAY VARY FROM ACTUAL SITUATION OR AS PROGRAM GOES WORKS



W-1
HOLLOW WINDOW W/ BENDING GLASS
SLATS ON 50mm (2") SPACERS &
THERMO-TRAGED (AVAILABLE ON
REQUANT)

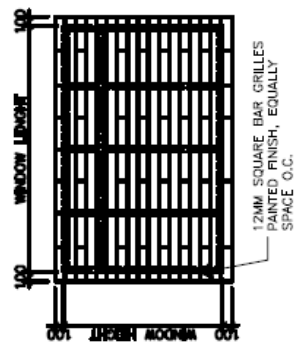
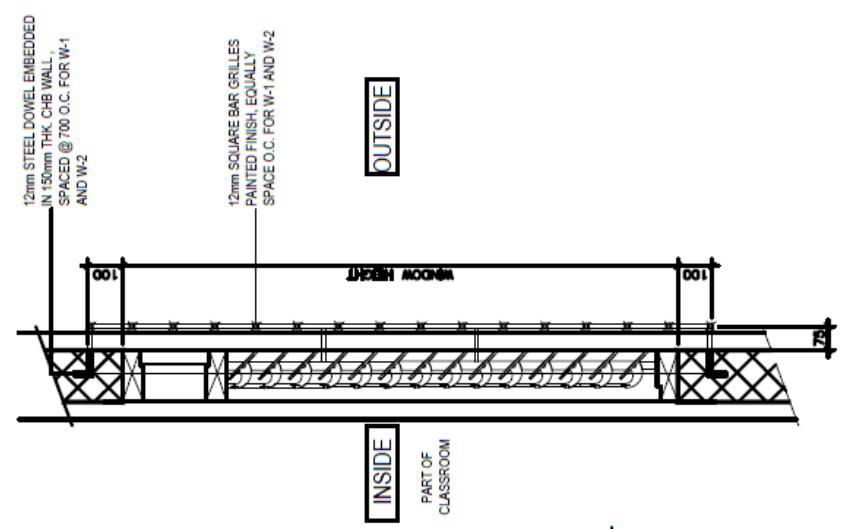
W-2
THIS CURBOUT WINDOW WITH 4 3/4"
CROSS SLATS WITH GRILLE FRAME 2.0m
x 1.8m

W-3
HOLLOW WINDOW W/ BENDING GLASS
SLATS ON 50mm (2") SPACERS &
THERMO-TRAGED 2m x 1.8m (AVAILABLE
ON REQUANT OR AS PROVIDED)

W-4
HOLLOW WINDOW W/ BENDING GLASS
SLATS ON 50mm (2") SPACERS &
THERMO-TRAGED 2.5m x 1.8m (AVAILABLE
ON REQUANT OR AS PROVIDED)

W-5
HOLLOW WINDOW W/ BENDING GLASS
SLATS ON 50mm (2") SPACERS &
THERMO-TRAGED 3.0m x 1.8m (AVAILABLE
ON REQUANT)

TYPICAL MAIN DOOR & WINDOW DETAIL AND SCHEDULE



GRILLES DETAIL

ADDITIONAL NOTE:
-ALSO REFER TO PROGRAM OF WORKS

TYPICAL WINDOW GRILLES DETAIL



GENERAL NOTES

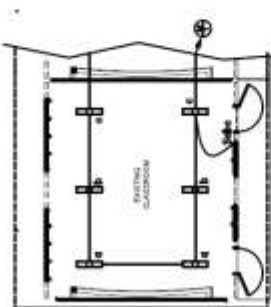
1. ALL ELECTRICAL WORKS SHALL COMPLY IN ACCORDANCE WITH THESE PLANS AND SPECIFICATIONS OR IN FORCE. THE APPLICABLE PROVISIONS OF THE LATEST EDITION OF THE PHILIPPINE ELECTRICAL CODE (PEC), THE RULES AND REGULATIONS OF THE LOCAL ENFORCING AUTHORITY AND THE REQUIREMENTS OF THE LOCAL POWER COMPANY. ALL ELECTRICAL WORKS SHALL BE UNDER THE IMMEDIATE SUPERVISION OF A DULY REGISTERED ELECTRICAL ENGINEER.
2. THE ELECTRICAL SERVICE POWER IS 1-PHASE, 3-WIRE, 230 V AC, 60 Hz.
3. WIRING METHODS SHALL BE AS FOLLOWS :
 - a. FEEDERS AND RISERS - RIGID METALLIC CONDUIT
 - b. LIGHTING, POWER RECEPTACLE - POLYVINYL CHLORIDE CONDUIT
 - c. BRANCH CRT., & AUXILIARY - SCH. 40
4. ALL WIRES SHALL BE COPPER AND THERMOPLASTIC INSULATED TYPE "THW" UNLESS OTHERWISE INDICATED IN THE PLAN. THE MINIMUM SIZE OF WIRE FOR POWER AND LIGHTING CIRCUIT MOMENTUM SHALL BE 3.5mm² AND INSULATED FOR 600 VOLTS. SMALLEST RACEWAY SHALL BE 15mm² TRADE/NOMINAL SIZE.
5. ALL OUTLET BOXES SHALL BE GALVANIZED GAUGE NO. 18 DEEP TYPE WITH FACTORY KNOCKOUTS.
6. ALL MATERIALS TO BE USED SHALL BE BRAND NEW AND APPROVED TYPE FOR THE PARTICULAR LOCATION AND PURPOSE.
7. GROUNDING SYSTEM SHALL BE PROVIDED TO ALL LIGHTING AND POWER CIRCUIT AS PER PHILIPPINE ELECTRICAL CODE REQUIREMENT.
8. MOUNTING HEIGHT OF WIRING DEVICES SHALL BE AS FOLLOWS :
 - a. LIGHT SWITCH - 1.20 M ABOVE FINISH FLOOR
 - b. CONVENIENCE OUTLET - 0.30 M ABOVE FINISH FLOOR
 - c. SAFETY SWITCH - 1.80 M ABOVE FINISH FLOOR

ADDITIONAL NOTE:
REPLACEMENT/ REWIRING OF ALL ELECTRICAL WIRING, FIXTURES AND OTHER NECESSARY ACCESSORIES OR JUST REHABILITATION OF EXISTING (REFER TO PROGRAM OF WORKS).

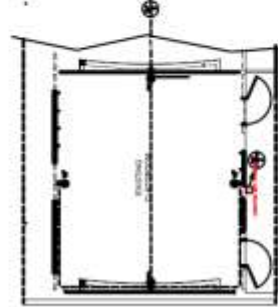
APPROXIMATE LOAD PER CLASSROOM BUILDING		TYPE FLUSH		WIRE & CONDUIT SIZE	
NO.	DESCRIPTION	VA LOAD	AMPS	VOLT POLE	AT AF
1	CEILING OUTLET - 3 x 300W	1080	4.70	2	30
2	WALL PAN OUTLET - 2 x 150W	360	1.56	2	30
3	FIRE ALARM - 1 x 200	200	0.83	2	30
TOTAL		1640 VA			

FEEDER : 2 - 8.0mm ² THHN + 1 - 5.5 mm ² TW (Ø) IN 25mm Ø RSC
PROTECTION : MAIN : 50kV/100AF, 2P, 230V, 15kAC, BOLT-ON
BRANCHER : 3 x 30kV, 2P, BOLT-ON IN NEMA 1 ENCLOSURE
FEEDER : 2 - 8.0mm ² THHN + 1 - 5.5 mm ² TW (Ø) IN 25mm Ø RSC
PROTECTION : MAIN : 50kV/100AF, 2P, 230V, 15kAC, BOLT-ON
BRANCHER : 3 x 30kV, 2P, BOLT-ON IN NEMA 1 ENCLOSURE

APPROXIMATE LOAD PER CLASSROOMS = 6.61 A
 (The load will depend on the No. of Classroom per Building)

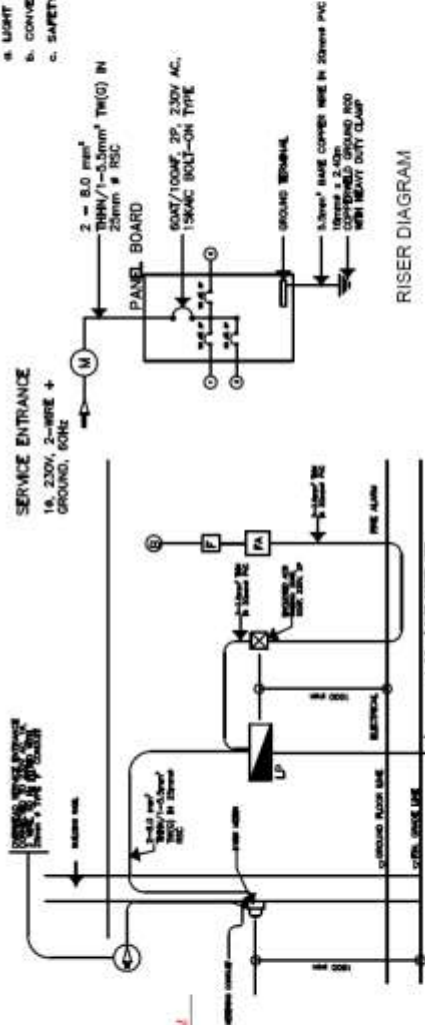


TYPICAL LIGHTING LAYOUT PER CLASSROOM

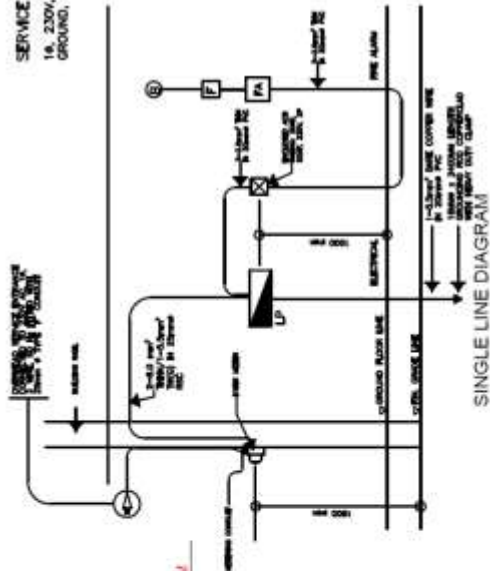


TYPICAL POWER LAYOUT PER CLASSROOM

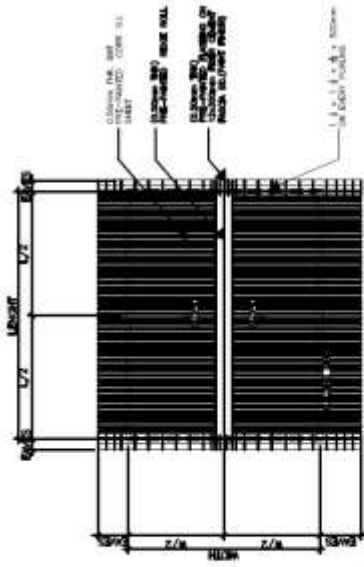
- LEGEND**
- SYMBOL
 - DESCRIPTION
 - ◇ - CEILING LIGHT OUTLET
 - - WALL PAN OUTLET
 - - FLOURESCENT
 - - WALL PAN OUTLET
 - - FIRE ALARM STATION



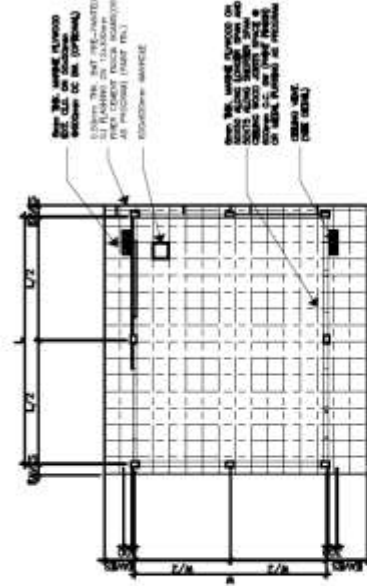
RISER DIAGRAM



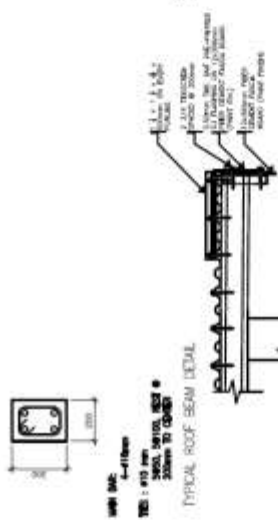
SINGLE LINE DIAGRAM



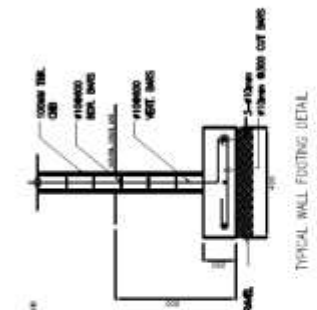
TYPICAL ROOF PLAN



TYPICAL REFLECTED CEILING PLAN



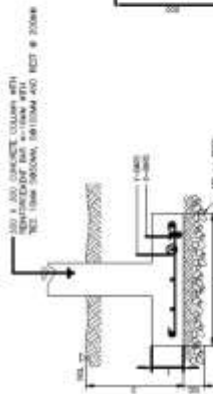
TYPICAL END FLASHING CONNECTION DETAIL



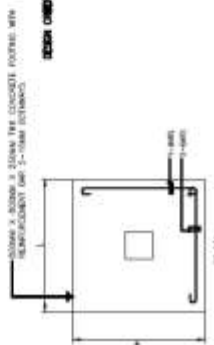
TYPICAL WALL FOOTING DETAIL

- CONCRETE
 $f'c = 28,000$ lbs/ft² (3,930 kg/cm²), minimum compressive strength of concrete
 if 28 days curing conditions specified.
- REBAR
 $f_y = 57,500$ lbs/ft² (4,000 kg/cm²), minimum yield strength of reinforcing bars
 unless otherwise specified.
- STRUCTURAL STEEL
 $f_y = 34,000$ lbs/ft² (2,400 kg/cm²), minimum minimum yield strength
 unless otherwise specified.
- FOUNDATION
 $SFP = 3,000$ lbs/ft² (200 kg/cm²), use used in the design for all footings.
 No footing shall rest on it.

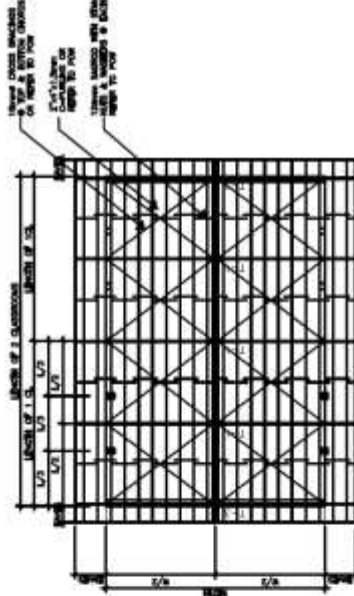
TYPICAL FOOTING, COLUMN, ROOF BEAM AND WALL FOOTING DETAIL



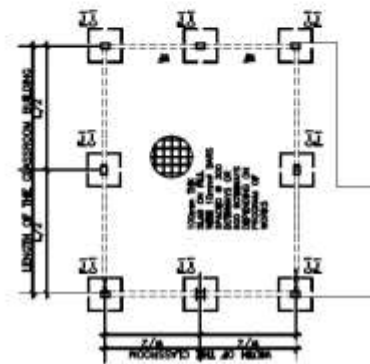
SECTION



PLAN



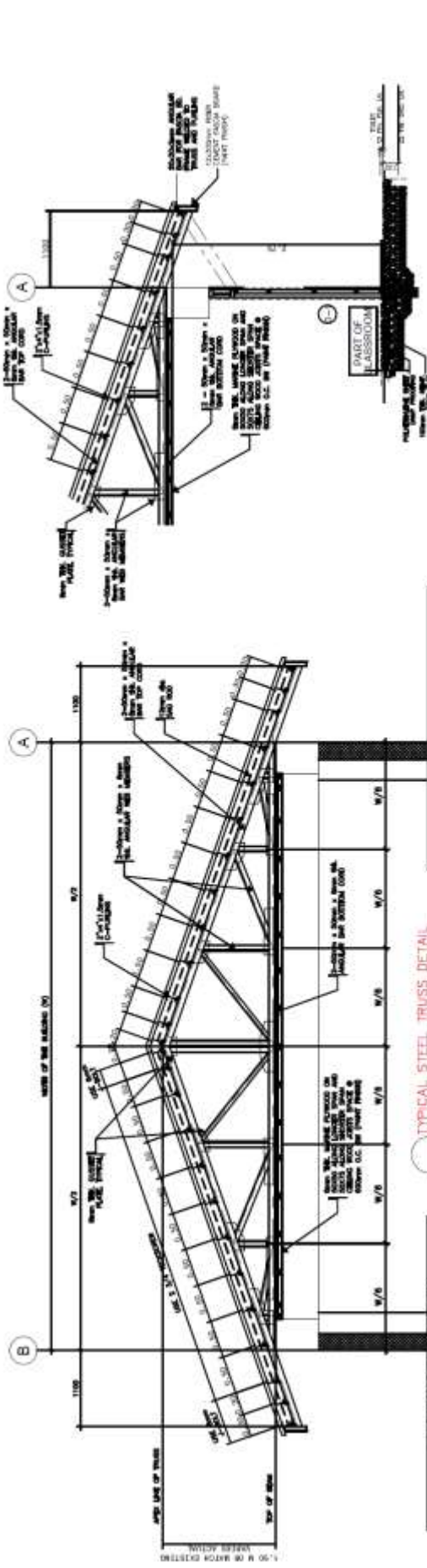
TYPICAL ROOF FRAMING PLAN



TYPICAL FOUNDATION PLAN

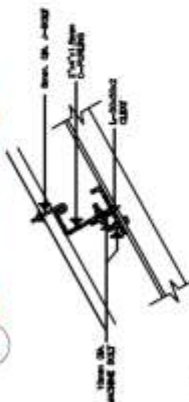


ADDITIONAL NOTE:
 THIS PLAN IS APPLICABLE FOR THE ROOF, BUT NOT FOR ARCHITECTURE OR MECHANICAL WORKS.

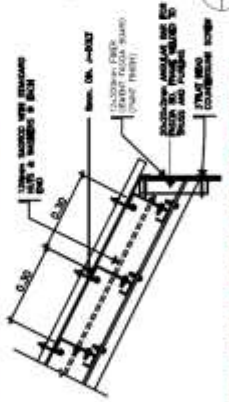


SCHEDULE OF TRUSS MEMBERS			
DESCRIPTION	QTY	SIZE	USE
TOP CHORD	3	13-ASB-100	TRUSS
W/2 PURLIN	3	13-ASB-100	TRUSS
W/8 TRUSS	3	13-ASB-100	TRUSS
W/2 PURLIN	3	13-ASB-100	TRUSS
W/8 TRUSS	3	13-ASB-100	TRUSS
W/2 PURLIN	3	13-ASB-100	TRUSS
W/8 TRUSS	3	13-ASB-100	TRUSS

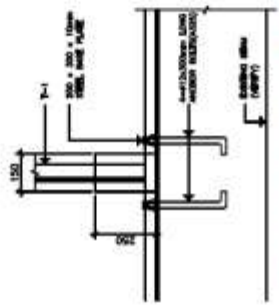
TYPICAL STEEL TRUSS DETAIL



TYPICAL PURLIN CONNECTION DETAIL



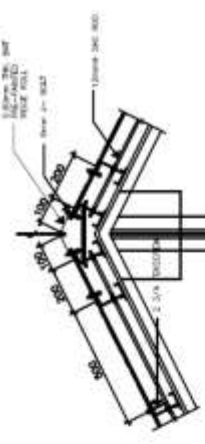
TYPICAL FASCIA BOARD CONNECTION DETAIL



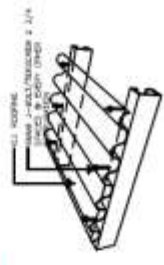
TYPICAL TRUSS CONNECTION DETAIL

ADDITIONAL NOTE:
-THIS PLAN IS APPLICABLE FOR STEEL TRUSS SYSTEMS WITH A REGULARITY OF RIBS. (REFER TO P. 140)

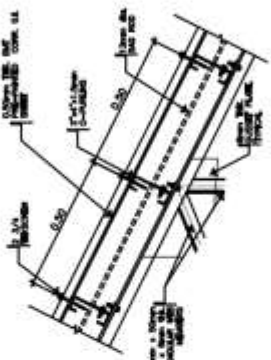
TYPICAL SECTIONAL ELEVATION



TYPICAL RIDGE ROLL CONNECTION DETAIL



TYPICAL WEB MEMBERS CONNECTION DETAIL



TYPICAL ISOMETRIC VIEW CONNECTION OF ROOF SHEET TO PURLIN



Section VIII. Bill of Quantities

Notes on the Bill of Quantities

Objectives

The objectives of the Bill of Quantities are:

- a. to provide sufficient information on the quantities of Works to be performed to enable Bids to be prepared efficiently and accurately; and
- b. when a Contract has been entered into, to provide a priced Bill of Quantities for use in the periodic valuation of Works executed.

In order to attain these objectives, Works should be itemized in the Bill of Quantities in sufficient detail to distinguish between the different classes of Works, or between Works of the same nature carried out in different locations or in other circumstances which may give rise to different considerations of cost. Consistent with these requirements, the layout and content of the Bill of Quantities should be as simple and brief as possible.

Daywork Schedule

A Daywork Schedule should be included only if the probability of unforeseen work, outside the items included in the Bill of Quantities, is high. To facilitate checking by the Entity of the realism of rates quoted by the Bidders, the Daywork Schedule should normally comprise the following:

- a. A list of the various classes of labor, materials, and Constructional Plant for which basic daywork rates or prices are to be inserted by the Bidder, together with a statement of the conditions under which the Contractor will be paid for work executed on a daywork basis.
- b. Nominal quantities for each item of Daywork, to be priced by each Bidder at Daywork rates as Bid. The rate to be entered by the Bidder against each basic Daywork item should include the Contractor's profit, overheads, supervision, and other charges.

Provisional Sums

A general provision for physical contingencies (quantity overruns) may be made by including a provisional sum in the Summary Bill of Quantities. Similarly, a contingency allowance for possible price increases should be provided as a provisional sum in the Summary Bill of Quantities. The inclusion of such provisional sums often facilitates budgetary approval by avoiding the need to request periodic supplementary approvals as the future need arises.

Where such provisional sums or contingency allowances are used, the SCC should state the manner in which they will be used, and under whose authority (usually the Procuring Entity's Representative's).

The estimated cost of specialized work to be carried out, or of special goods to be supplied, by other contractors should be indicated in the relevant part of the Bill of Quantities as a particular provisional sum with an appropriate brief description. A separate procurement procedure is normally carried out by the Procuring Entity to select such specialized contractors. To provide an element of competition among the Bidders in respect of any facilities, amenities, attendance, etc., to be provided by the successful Bidder as prime Contractor for the use and convenience of the specialist contractors, each related provisional sum should be followed by an item in the Bill of Quantities inviting the Bidder to quote a sum for such amenities, facilities, attendance, etc.

Signature Box

A signature box shall be added at the bottom of each page of the Bill of Quantities where the authorized representative of the Bidder shall affix his signature. Failure of the authorized representative to sign each and every page of the Bill of Quantities shall be a cause for rejection of his bid.

These Notes for Preparing a Bill of Quantities are intended only as information for the Procuring Entity or the person drafting the Bidding Documents. They should not be included in the final documents.

FOR BILL OF QUANTTIES PLEASE REFER TO THE PROGRAM OF WORKS - BILL
OF QUANTITIES FOUND ON SECTION VI - SPECIFICATIONS

Section IX. Checklist of Technical and Financial Documents

Notes on the Checklist of Technical and Financial Documents

The prescribed documents in the checklist are mandatory to be submitted in the Bid, but shall be subject to the following:

- a. GPPB Resolution No. 09-2020 on the efficient procurement measures during a State of Calamity or other similar issuances that shall allow the use of alternate documents in lieu of the mandated requirements; or
- b. any subsequent GPPB issuances adjusting the documentary requirements after the effectivity of the adoption of the PBDs.

The BAC shall be checking the submitted documents of each Bidder against this checklist to ascertain if they are all present, using a non-discretionary “pass/fail” criterion pursuant to Section 30 of the 2016 revised IRR of RA No. 9184.

Checklist of Technical and Financial Documents

I. TECHNICAL COMPONENT ENVELOPE

Class “A” Documents

Legal Documents

- (a) Valid PhilGEPS Registration Certificate (Platinum Membership) (all pages);
or
- (b) Registration certificate from Securities and Exchange Commission (SEC), Department of Trade and Industry (DTI) for sole proprietorship, or Cooperative Development Authority (CDA) for cooperatives or its equivalent document;
and
- (c) Mayor’s or Business permit issued by the city or municipality where the principal place of business of the prospective bidder is located, or the equivalent document for Exclusive Economic Zones or Areas;
and
- (d) Tax clearance per E.O. No. 398, s. 2005, as finally reviewed and approved by the Bureau of Internal Revenue (BIR).

Technical Documents

- (e) Statement of the prospective bidder of all its ongoing government and private contracts, including contracts awarded but not yet started, if any, whether similar or not similar in nature and complexity to the contract to be bid; **and**
- (f) Statement of the bidder’s Single Largest Completed Contract (SLCC) similar to the contract to be bid, except under conditions provided under the rules (*SLCC should be supported by Notice of Award; or Notice to Proceed; or Project Owner's Certificate of Final Acceptance issued by the owner other than the contractor*);
and
- (g) Philippine Contractors Accreditation Board (PCAB) License;
or
Special PCAB License in case of Joint Ventures;
and registration for the type and cost of the contract to be bid; **and**
- (h) Original copy of Bid Security. If in the form of a Surety Bond, submit also a certification issued by the Insurance Commission;
or
Original copy of Notarized Bid Securing Declaration; **and**
- (i) Project Requirements, which shall include the following:
 - a. Organizational chart for the contract to be bid;
 - b. List of contractor’s key personnel (*e.g.*, Project Manager, Project Engineers, Materials Engineers, and Foremen), to be assigned to the

contract to be bid, with their complete qualification and experience data;

- c. List of contractor's major equipment units, which are owned, leased, and/or under purchase agreements, supported by proof of ownership or certification of availability of equipment from the equipment lessor/vendor for the duration of the project, as the case may be; **and**
- (j) Original duly signed Omnibus Sworn Statement (OSS); **and** if applicable, Original Notarized Secretary's Certificate in case of a corporation, partnership, or cooperative; or Original Special Power of Attorney of all members of the joint venture giving full power and authority to its officer to sign the OSS and do acts to represent the Bidder.

Financial Documents

- (k) The prospective bidder's audited financial statements, showing, among others, the prospective bidder's total and current assets and liabilities, stamped "received" by the BIR or its duly accredited and authorized institutions, for the preceding calendar year which should not be earlier than two (2) years from the date of bid submission; **and**
- (l) The prospective bidder's computation of Net Financial Contracting Capacity (NFCC).

Class "B" Documents

- (m) If applicable, duly signed joint venture agreement (JVA) in accordance with RA No. 4566 and its IRR in case the joint venture is already in existence; **or** duly notarized statements from all the potential joint venture partners stating that they will enter into and abide by the provisions of the JVA in the instance that the bid is successful.

Other documentary requirements from the procuring entity

- (n) Affidavit of Site Inspection
- (o) Certificate of Site Inspection duly signed by the School Head or its Representative.

NUMBER OF COPIES OF ELIGIBILITY+TECHNICAL COMPONENT DOCUMENTS IN SEPARATE ENVELOPE

- One (1) Original Copy
- One (1) Additional Copy (Copy 1)
- One (1) Copy in compact disc (CD)

The softcopy or CD copy of the Technical Component for Item "e" shall be in Microsoft Excel File format to facilitate Post-Qualification Evaluation.

II. FINANCIAL COMPONENT ENVELOPE

- (p) Original of duly signed and accomplished Financial Bid Form; **and**

Other documentary requirements under RA No. 9184

- (q) Original of duly signed Bid Prices in the Bill of Quantities; **and**
- (r) Duly accomplished Detailed Estimates Form, including a summary sheet indicating the unit prices of construction materials, labor rates, and equipment rentals used in coming up with the Bid; **and**
- (s) Cash Flow by Quarter.

NUMBER OF COPIES OF FINANCIAL COMPONENT DOCUMENTS IN SEPARATE ENVELOPE

- One (1) Original Copy
- One (1) Additional Copy (Copy 1)
- One (1) Copy in compact disc (CD)

The softcopy or CD copy of the Technical Component for Items "q" and "r" must be in Microsoft Excel File format to facilitate Bid Evaluation.

BIDDING FORMS

- a. Bid Securing Declaration Form
- b. Bid Form
- c. Contract Agreement Form
- d. Omnibus Sworn Statement Form
- e. Performance Securing Declaration Form

Bid Securing Declaration Form

[shall be submitted with the Bid if bidder opts to provide this form of bid security]

REPUBLIC OF THE PHILIPPINES)
CITY OF _____) S.S.

BID SECURING DECLARATION **Project Identification No.: *[Insert number]***

To: *[Insert name and address of the Procuring Entity]*

I/We, the undersigned, declare that:

1. I/We understand that, according to your conditions, bids must be supported by a Bid Security, which may be in the form of a Bid Securing Declaration.
2. I/We accept that: (a) I/we will be automatically disqualified from bidding for any procurement contract with any procuring entity for a period of two (2) years upon receipt of your Blacklisting Order; and, (b) I/we will pay the applicable fine provided under Section 6 of the Guidelines on the Use of Bid Securing Declaration, within fifteen (15) days from receipt of the written demand by the procuring entity for the commission of acts resulting to the enforcement of the bid securing declaration under Sections 23.1(b), 34.2, 40.1 and 69.1, except 69.1(f), of the IRR of RA No. 9184; without prejudice to other legal action the government may undertake.
3. I/We understand that this Bid Securing Declaration shall cease to be valid on the following circumstances:
 - a. Upon expiration of the bid validity period, or any extension thereof pursuant to your request;
 - b. I am/we are declared ineligible or post-disqualified upon receipt of your notice to such effect, and (i) I/we failed to timely file a request for reconsideration or (ii) I/we filed a waiver to avail of said right; and
 - c. I am/we are declared the bidder with the Lowest Calculated Responsive Bid, and I/we have furnished the performance security and signed the Contract.

IN WITNESS WHEREOF, I/We have hereunto set my/our hand/s this ____ day of *[month]* *[year]* at *[place of execution]*.

*[Insert NAME OF BIDDER OR ITS AUTHORIZED
REPRESENTATIVE]*

[Insert signatory's legal capacity]

Affiant

[Jurat]

[Format shall be based on the latest Rules on Notarial Practice]

Bid Form for the Procurement of Infrastructure Projects
[shall be submitted with the Bid]

BID FORM

Date : _____

Project Identification No. : _____

To: *[name and address of Procuring Entity]*

Having examined the Philippine Bidding Documents (PBDs) including the Supplemental or Bid Bulletin Numbers *[insert numbers]*, the receipt of which is hereby duly acknowledged, we, the undersigned, declare that:

- a. We have no reservation to the PBDs, including the Supplemental or Bid Bulletins, for the Procurement Project: *[insert name of contract]*;
- b. We offer to execute the Works for this Contract in accordance with the PBDs;
- c. The total price of our Bid in words and figures, excluding any discounts offered below is: *[insert information]*;
- d. The discounts offered and the methodology for their application are: *[insert information]*;
- e. The total bid price includes the cost of all taxes, such as, but not limited to: *[specify the applicable taxes, e.g. (i) value added tax (VAT), (ii) income tax, (iii) local taxes, and (iv) other fiscal levies and duties]*, which are itemized herein and reflected in the detailed estimates,
- f. Our Bid shall be valid within the a period stated in the PBDs, and it shall remain binding upon us at any time before the expiration of that period;
- g. If our Bid is accepted, we commit to obtain a Performance Security in the amount of *[insert percentage amount]* percent of the Contract Price for the due performance of the Contract, or a Performance Securing Declaration in lieu of the the allowable forms of Performance Security, subject to the terms and conditions of issued GPPB guidelines² for this purpose;

² currently based on GPPB Resolution No. 09-2020

- h. We are not participating, as Bidders, in more than one Bid in this bidding process, other than alternative offers in accordance with the Bidding Documents;
- i. We understand that this Bid, together with your written acceptance thereof included in your notification of award, shall constitute a binding contract between us, until a formal Contract is prepared and executed; and
- j. We understand that you are not bound to accept the Lowest Calculated Bid or any other Bid that you may receive.
- k. We likewise certify/confirm that the undersigned, is the duly authorized representative of the bidder, and granted full power and authority to do, execute and perform any and all acts necessary to participate, submit the bid, and to sign and execute the ensuing contract for the [Name of Project] of the [Name of the Procuring Entity].
- l. We acknowledge that failure to sign each and every page of this Bid Form, including the Bill of Quantities, shall be a ground for the rejection of our bid.

Name: _____

Legal Capacity: _____

Signature: _____

Duly authorized to sign the Bid for and behalf of: _____

Date: _____

**Contract Agreement Form for the
Procurement of Infrastructure Projects (Revised)**

*[not required to be submitted with the Bid, but it shall be submitted within ten (10) days after receiving the
Notice of Award]*

CONTRACT AGREEMENT

THIS AGREEMENT, made this *[insert date]* day of *[insert month]*, *[insert year]* between *[name and address of PROCURING ENTITY]* (hereinafter called the “Entity”) and *[name and address of Contractor]* (hereinafter called the “Contractor”).

WHEREAS, the Entity is desirous that the Contractor execute *[name and identification number of contract]* (hereinafter called “the Works”) and the Entity has accepted the Bid for *[contract price in words and figures in specified currency]* by the Contractor for the execution and completion of such Works and the remedying of any defects therein.

NOW THIS AGREEMENT WITNESSETH AS FOLLOWS:

1. In this Agreement, words and expressions shall have the same meanings as are respectively assigned to them in the Conditions of Contract hereinafter referred to.
2. The following documents as required by the 2016 revised Implementing Rules and Regulations of Republic Act No. 9184 shall be deemed to form and be read and construed as part of this Agreement, *viz.*:
 - a. Philippine Bidding Documents (PBDs);
 - i. Drawings/Plans;
 - ii. Specifications;
 - iii. Bill of Quantities;
 - iv. General and Special Conditions of Contract;
 - v. Supplemental or Bid Bulletins, if any;
 - b. Winning bidder’s bid, including the Eligibility requirements, Technical and Financial Proposals, and all other documents or statements submitted;

Bid form, including all the documents/statements contained in the Bidder’s bidding envelopes, as annexes, and all other documents submitted (*e.g.*, Bidder’s response to request for clarifications on the bid), including corrections to the bid, if any, resulting from the Procuring Entity’s bid evaluation;

- c. Performance Security;

- d. Notice of Award of Contract and the Bidder's conforme thereto; and
 - e. Other contract documents that may be required by existing laws and/or the Procuring Entity concerned in the PBDs. **Winning bidder agrees that additional contract documents or information prescribed by the GPPB that are subsequently required for submission after the contract execution, such as the Notice to Proceed, Variation Orders, and Warranty Security, shall likewise form part of the Contract.**
3. In consideration for the sum of *[total contract price in words and figures]* or such other sums as may be ascertained, *[Named of the bidder]* agrees to *[state the object of the contract]* in accordance with his/her/its Bid.
 4. The *[Name of the procuring entity]* agrees to pay the above-mentioned sum in accordance with the terms of the Bidding.

IN WITNESS whereof the parties thereto have caused this Agreement to be executed the day and year first before written.

[Insert Name and Signature]
[Insert Signatory's Legal Capacity]

[Insert Name and Signature]
[Insert Signatory's Legal Capacity]

for:

[Insert Procuring Entity]

for:

[Insert Name of Supplier]

Acknowledgment

[Format shall be based on the latest Rules on Notarial Practice]

Omnibus Sworn Statement (Revised)

[shall be submitted with the Bid]

REPUBLIC OF THE PHILIPPINES)
CITY/MUNICIPALITY OF _____) S.S.

AFFIDAVIT

I, [Name of Affiant], of legal age, [Civil Status], [Nationality], and residing at [Address of Affiant], after having been duly sworn in accordance with law, do hereby depose and state that:

1. *[Select one, delete the other:]*

[If a sole proprietorship:] I am the sole proprietor or authorized representative of [Name of Bidder] with office address at [address of Bidder];

[If a partnership, corporation, cooperative, or joint venture:] I am the duly authorized and designated representative of [Name of Bidder] with office address at [address of Bidder];

2. *[Select one, delete the other:]*

[If a sole proprietorship:] As the owner and sole proprietor, or authorized representative of [Name of Bidder], I have full power and authority to do, execute and perform any and all acts necessary to participate, submit the bid, and to sign and execute the ensuing contract for [Name of the Project] of the [Name of the Procuring Entity], as shown in the attached duly notarized Special Power of Attorney;

[If a partnership, corporation, cooperative, or joint venture:] I am granted full power and authority to do, execute and perform any and all acts necessary to participate, submit the bid, and to sign and execute the ensuing contract for [Name of the Project] of the [Name of the Procuring Entity], as shown in the attached [state title of attached document showing proof of authorization (e.g., duly notarized Secretary's Certificate, Board/Partnership Resolution, or Special Power of Attorney, whichever is applicable)];

3. [Name of Bidder] is not "blacklisted" or barred from bidding by the Government of the Philippines or any of its agencies, offices, corporations, or Local Government Units, foreign government/foreign or international financing institution whose blacklisting rules have been recognized by the Government Procurement Policy Board, **by itself or by relation, membership, association, affiliation, or controlling interest with another blacklisted person or entity as defined and provided for in the Uniform Guidelines on Blacklisting;**

4. Each of the documents submitted in satisfaction of the bidding requirements is an authentic copy of the original, complete, and all statements and information provided therein are true and correct;

5. [Name of Bidder] is authorizing the Head of the Procuring Entity or its duly authorized representative(s) to verify all the documents submitted;
6. *[Select one, delete the rest:]*
[If a sole proprietorship:] The owner or sole proprietor is not related to the Head of the Procuring Entity, members of the Bids and Awards Committee (BAC), the Technical Working Group, and the BAC Secretariat, the head of the Project Management Office or the end-user unit, and the project consultants by consanguinity or affinity up to the third civil degree;
[If a partnership or cooperative:] None of the officers and members of [Name of Bidder] is related to the Head of the Procuring Entity, members of the Bids and Awards Committee (BAC), the Technical Working Group, and the BAC Secretariat, the head of the Project Management Office or the end-user unit, and the project consultants by consanguinity or affinity up to the third civil degree;
[If a corporation or joint venture:] None of the officers, directors, and controlling stockholders of [Name of Bidder] is related to the Head of the Procuring Entity, members of the Bids and Awards Committee (BAC), the Technical Working Group, and the BAC Secretariat, the head of the Project Management Office or the end-user unit, and the project consultants by consanguinity or affinity up to the third civil degree;
7. [Name of Bidder] complies with existing labor laws and standards; and
8. [Name of Bidder] is aware of and has undertaken the responsibilities as a Bidder in compliance with the Philippine Bidding Documents, which includes:
 - a. Carefully examining all of the Bidding Documents;
 - b. Acknowledging all conditions, local or otherwise, affecting the implementation of the Contract;
 - c. Making an estimate of the facilities available and needed for the contract to be bid, if any; and
 - d. Inquiring or securing Supplemental/Bid Bulletin(s) issued for the [Name of the Project].
9. [Name of Bidder] did not give or pay directly or indirectly, any commission, amount, fee, or any form of consideration, pecuniary or otherwise, to any person or official, personnel or representative of the government in relation to any procurement project or activity.
10. **In case advance payment was made or given, failure to perform or deliver any of the obligations and undertakings in the contract shall be sufficient grounds to constitute criminal liability for Swindling (Estafa) or the commission of fraud with unfaithfulness or abuse of confidence through misappropriating or converting any payment received by a person or entity under an obligation involving the duty to deliver certain goods or services, to the prejudice of the public and the government of the Philippines pursuant to Article 315 of Act No. 3815 s. 1930, as amended, or the Revised Penal Code.**

IN WITNESS WHEREOF, I have hereunto set my hand this ___ day of ___, 20__ at _____, Philippines.

[Insert NAME OF BIDDER OR ITS AUTHORIZED REPRESENTATIVE]

[Insert signatory's legal capacity]

Affiant

[Jurat]

[Format shall be based on the latest Rules on Notarial Practice]

Performance Securing Declaration (Revised)

[if used as an alternative performance security but it is not required to be submitted with the Bid, as it shall be submitted within ten (10) days after receiving the Notice of Award]

REPUBLIC OF THE PHILIPPINES)
CITY OF _____) S.S.

PERFORMANCE SECURING DECLARATION

Invitation to Bid: [Insert Reference Number indicated in the Bidding Documents]

To: [Insert name and address of the Procuring Entity]

I/We, the undersigned, declare that:

1. I/We understand that, according to your conditions, to guarantee the faithful performance by the supplier/distributor/manufacturer/contractor/consultant of its obligations under the Contract, I/we shall submit a Performance Securing Declaration within a maximum period of ten (10) calendar days from the receipt of the Notice of Award prior to the signing of the Contract.
2. I/We accept that: I/we will be automatically disqualified from bidding for any procurement contract with any procuring entity for a period of one (1) year for the first offense, or two (2) years **for the second offense**, upon receipt of your Blacklisting Order if I/We have violated my/our obligations under the Contract;
3. I/We understand that this Performance Securing Declaration shall cease to be valid upon:
 - a. issuance by the Procuring Entity of the Certificate of Final Acceptance, subject to the following conditions:
 - i. Procuring Entity has no claims filed against the contract awardee;
 - ii. It has no claims for labor and materials filed against the contractor; and
 - iii. Other terms of the contract; or
 - b. replacement by the winning bidder of the submitted PSD with a performance security in any of the prescribed forms under Section 39.2 of the 2016 revised IRR of RA No. 9184 as required by the end-user.

IN WITNESS WHEREOF, I/We have hereunto set my/our hand/s this ____ day of [month] [year] at [place of execution].

*[Insert NAME OF BIDDER OR ITS
AUTHORIZED REPRESENTATIVE]*

[Insert signatory's legal capacity]

Affiant

[Jurat]

[Format shall be based on the latest Rules on Notarial Practice]

ANNEXES

ANNEX A. Certificate of Site Inspection

ANNEX B. Memorandum on Contractor's All Risk Insurance
(CARI)

ANNEX C. Sealing and Marking of Bids

ANNEX D. Statement of the prospective bidder of all its
ongoing government and private contracts, including contracts
awarded but not yet started

ANNEX E. Statement of the bidder's Single Largest
Completed Contract (SLCC) similar to the contract to be bid



Republic of the Philippines
Department of Education
REGION VII – central visayas
SCHOOLS DIVISION OF NEGROS ORIENTAL

CERTIFICATE OF SITE INSPECTION

DATE: _____

JOELYZA M. ARCILLA, EdD, CESE
OIC - Assist. Schools Division Superintendent
Chair, Bids and Awards Committee
DepEd, Schools Division of Negros Oriental
Dumaguete City

This is to certify that:

1. _____
2. _____

having represented themselves that he/she/they is/are the duly authorized representative/s of _____

with office address at _____

has/have inspected the actual site for the proposed infrastructure project: **CY 2021 Basic Educational Facilities Funds (BEFF) Repair of Classrooms - Savings (Maluay Elementary School, Zamboanguita, Negros Oriental).**

This certification is issued to the above named contractor / representative/s as required in the Bid Data Sheet - ITB Clause 3.

Issued by: _____
School Head/Representative



Republika ng Pilipinas
Kagawaran ng Edukasyon
Tanggapan ng Pangalawang Kalihim

OUA MEMO 00-0121-0081
MEMORANDUM
22 January 2021

**For: Regional Directors
Schools Division Superintendents
Regional Engineers
Division Engineers
All Others Concerned**

**Subject: CONTRACTOR'S ALL RISK INSURANCE (CARI) FOR
INFRASTRUCTURE PROJECTS**

The Office of the Undersecretary for Administration (OUA) requires all DepEd-implemented infrastructure projects to be covered by Contractor's All Risk Insurance (CARI) policy.

In line with this, Division and Project Engineers are hereby directed to ensure that the bidding documents include the CARI policy prior to the awarding of contract.

For all future correspondence and queries on the above-mentioned subject, please contact Ms. Czarina Suzette D. Santiago, Administrative Assistant II of EFD, through +63 917 676 0559 and email at czarina.santiago@deped.gov.ph

For compliance of all concerned.


ALAIN DEL B. PASCUA
Undersecretary

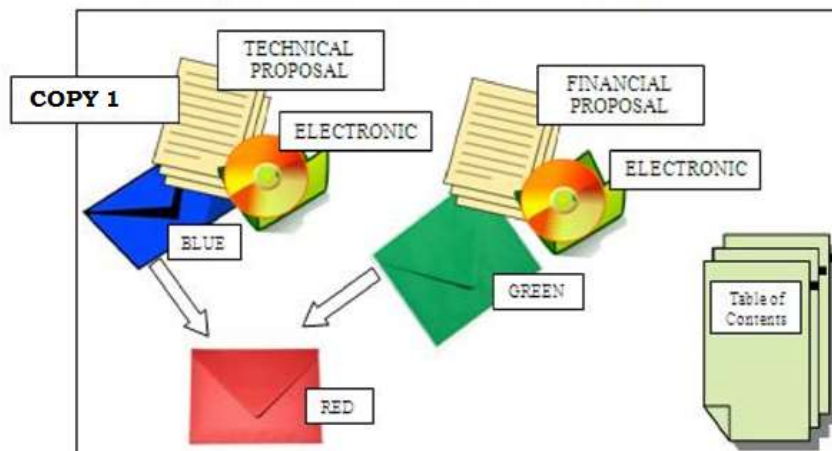
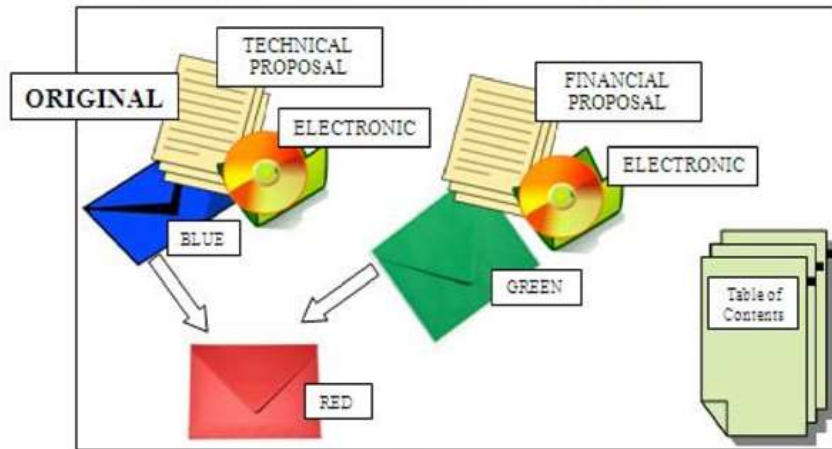


Office of the Undersecretary for Administration (OUA)

(Administrative Service (AS), Information and Communications Technology Service (ICTS), Disaster Risk Reduction and Management Service (DRMMS), Bureau of Learner Support Services (BLSS), Baguio Teachers Camp (BTC), Central Security & Safety Office (CSSO))

Department of Education, Central Office, Meralco Avenue, Pasig City
Rm 519, Mabini Bldg; Mobile: +639260320762; Tel: (+632) 86337203, (+632) 86376207
Email: usec.admin@deped.gov.ph; Facebook/Twitter @depedtayo

SEALING AND MARKING OF BIDS



ORIGINAL / COPY NO. 1

[BIDDER'S COMPANY NAME]
[COMPANY'S OFFICE ADDRESS]
PUBLIC BIDDING: [PROJECT TITLE]
BIDDING FOR [Lot no.]:[item description] (if applicable)

THE CHAIRPERSON
BIDS AND AWARDS COMMITTEE
DEPARTMENT OF EDUCATION
SCHOOLS DIVISION OF NEGROS ORIENTAL
[VENUE OF BID OPENING]

DO NOT OPEN BEFORE [*Insert* TIME AND DATE OF BID OPENING]



Standard Form Number: SF-INFR - 15
 Revised on: July 29, 2004

List of all Ongoing Government & Private Construction Contracts awarded but not yet started

Business Name : _____
 Business Address : _____

Name of Contract/Location Project Cost	Owner Name a. Address b. Telephone Nos.	Nature of Work	Contractor's Role		Date Awarded		% of Accomplishment		Value of Outstanding Works
			Description	%	a. Date Started	b. Date of Completion	Planned	Actual	
Government									
Private									
								Total Cost	

Note: This statement shall be supported with:

- 1 Notice of Award and/or Contract
- 2 Notice to Proceed issued by the owner
- 3 Certificate of Accomplishments signed by the owner or Project Engineer

Submitted by : _____
 Designation : _____
 Date : _____
 (Printed Name & Signature)

One of the technical documents required to be in the Eligibility Envelope of a prospective bidder is a list of all its on-going, completed, and awarded but not yet started contracts.

ANNEX E

Standard Form Number: SF-INFR - 16
 Revised on: July 29, 2004

Statement of all Completed Government & Private Construction Contracts which are similar in nature

Business Name : _____
 Business Address : _____

Name of Contract	a. Owner Name b. Address c. Telephone Nos.	Nature of Work	Contractor's Role		a. Amount at Award b. Amount at Completion c. Duration	a. Date Awarded b. Contract Effectivity c. Date Completed
			Description	%		
Government						
Private						

Note: This statement shall be supported with:

- 1 Contract
- 2 CPES rating sheets and/or Certificate of Completion
- 3 Certificate of Acceptance

Submitted by : _____
 (Printed Name & Signature)

Designation : _____
 Date : _____

One of the technical documents required to be in the Eligibility Envelope of a prospective bidder is a list of all contracts which are similar in nature and complexity to the contract to be bid. This statement will show that the value of the prospective bidder's largest single completed contract, adjusted to current prices using the National Statistics Office (NSO) consumer price indices available at the G-EPS website, and similar to the contract to be bid, must be at least fifty percent (50%) of the approved budget for the contract to be bid.

Republic of the Philippines



Government Procurement Policy Board